

All Rights Reserved

Materials and specifications are subject to change without notice.
Featured machines in photos may include additional equipment. See your XCMG dealer for available options.



XCMG European Sales & Services GmbH

Add: Europark Fichtenhain B 4, 47807 Krefeld, Deutschland

Tel: +49 (0) 2151 8209 351

Fax: +49 (0) 21 51-82 09-499

E-mail: Europe@xcmg.com

www.xcmg.com

XUZHOU CONSTRUCTION MACHINERY GROUP IMP. & EXP. CO., LTD

Add: NO.1, Tuolanshan Road, Xuzhou Economic Developing Zone,
Jiangsu, China 221004

Tel: +86 (0) 516 8773 9228

Fax: +86 (0) 516 8773 9230

E-mail: Europe@xcmg.com



Hydraulic Excavators

XE75U



Rated Power: 45kw

Operating Weight: 7.46t

Standard Bucket Capacity: 0.30m³





INTRODUCTION OF XCMG

Founded in 1943, XCMG is a multinational corporation with the most comprehensive range of competitive, influential products in the construction machinery industry. Our business covers eight key areas: construction machinery, heavy trucks, mining machinery, sanitation machinery, machinery components, construction, finance, and the ICT industry.

XCMG has established a global R&D network with a total of six centers in China, the US, Germany, Brazil and India, with China national technology center at its core. In addition to a number of manufacturing bases in China, the US, Germany, the Netherlands, Poland, Austria, Brazil, India, and Uzbekistan, we possess two complete machine brands (XCMG, Schwing), and several component brands including FT, AMCA. It is the strength of this global R&D network and manufacturing operations that has made XCMG the industry leading global construction equipment manufacturer that it is today.

For more than 30 years, XCMG has been sowing the seeds of overseas development as the No. 1 exporter in China's construction machinery industry. Today, we have 42 branches and offices, 315 distributors, 526 contractors in 188 countries and regions worldwide and are still growing rapidly.

XCMG IN NORTH AMERICA

Ever since the North America project in 2012, XCMG has been expanding its network throughout North America market and keeping the pace forward. Up to now, more than ten sales & service outlets had been established in United States and Canada, and XCMG equipment are being actively utilized in North American rental fleet spreading over 100 rental branches, constantly bringing utilization, uptime and value. Around 250 XCMG employees are working in North America market, supplying customers with quality machines, timely parts and service.

XCMG N.A.: XCMG North America Corp.

ARC: XCMG American Research Corporation.



► A Superior Model with Passionate Design

Developed with the concept of “Safe, Reliable, Efficient, Comfortable”, the XE75U hydraulic excavator offers additional value to the operator. New features are presented making the machines more productive, versatile, and cost effective.

- Kubota V2607-CR-TIE4B Tier 4F engine, along with the load-sensing hydraulic system provides high operating efficiency and fuel economy.
- This compact excavator is designed and built to work on more jobsites while reducing risk of damage to the machine and its surroundings.
- Convenient accessible service points make maintenance easier and reduce your potential downtime.



Engine Speed Knob

The newly designed engine speed knob allows easy engine control.

Optimized Efficiency

contributes to lower costs, increased productivity and maximum uptime, and a number of efficient features are combined on the XE75U. ECO mode allows you to choose the right machine setting for the job with impressive fuel efficiency.

Robust Boom, Arm and Undercarriage

FEA Element Analysis has been used to calculate the best load distribution throughout the boom structure. To better protect the base of the arm, reinforced bars have been added and the arm center and end structure have been strengthened.

The X-shaped undercarriage has higher durability than demanded on the site, as proven through numerous tests including road tests and virtual simulation.

► Large Operator Space with Ergonomic Control Layout

The XE75U offers the operator a large, comfortable workspace. The ergonomic layout of the controls, the travel pedals, and the adjustable wrist rests, are designed to reduce operator fatigue and increase productivity.



- 1 Operator station
- 2 Foldable travel pedal
- 3 Seat
- 4 Blade control handle
- 5 Control switches
- 6 Air conditioner
- 7 Colour LCD monitor
- 8 Hydr piloted joystick
- 9 Adjustable arm support

▶ Easy Service Access

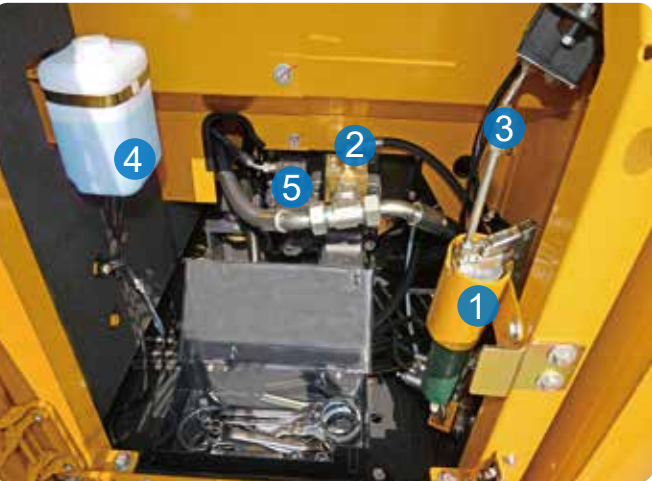
Daily checks and regular service points including fuel and hydraulic oil fill are easily reached.

The main hydraulic valve and lines are also easily reached through a removable floor plate and side panels.

The machine has durable steel body panels all around, offering good resistance to impact damage after a potential incident.



The XE75U is designed for lower maintenance cost with longer service intervals – resulting in more machine availability on-site. Meanwhile, skilled XCMG-trained technicians are available to provide extra support when needed.



- 1 Fuel water separator
- 2 Compressor Freon fill port
- 3 Engine oil fill port
- 4 Fuel filter
- 5 Engine oil filter

■ Engine

	XE75U
Make/model	V2607-CR-TIE4B
No. of cylinders	4
Power output	45 kw / 2200 rpm
Max torque	225.8 Nm/1400-1800 rpm
Displacement	2,615 L

■ Hydraulic system

This original XCMG design allows independent and combined operations of all functions by pilot controlled levers.

• Pump

	XE75U
Main Pump	1
Rated Flow of Main Pumpy	176 L/min
Main Safety Valve Pressure	26.5 MPa
Travel System Pressure	26.5 MPa
Swing System Pressure	18.6 MPa
Pilot System Pressure	3.5 MPa

■ Oil Capacity

	XE75U
Fuel Tank Capacity	130 L
Hydraulic Tank Capacity	76 L
Engine Oil Capacity	10 L

■ Drive

Each track is driven by an independent, high-torque, axial piston motor through planetary reduction gears. Two control levers provide smooth travel or counter-rotation upon demand.

• Speed & traction

	XE75U
Travel speed (low - high)	5.4/2.9 km/h
Swing Speed	10r/min
Gradeability	≤35°
Ground Pressure	33.5 kPa

■ Digging forces (ISO 6015)

	XE75U
Bucket Digging Force	57 kN
Arm Digging Force	38 kN
Maximum Tractive Force	68.3 kN





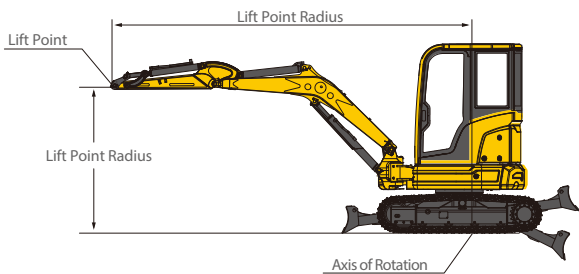
Lifting Capacities

XE75U

■ Cab • standard arm (1350 mm) • standard counterweight • without bucket

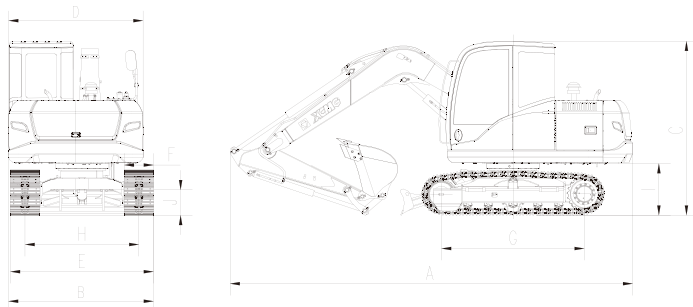
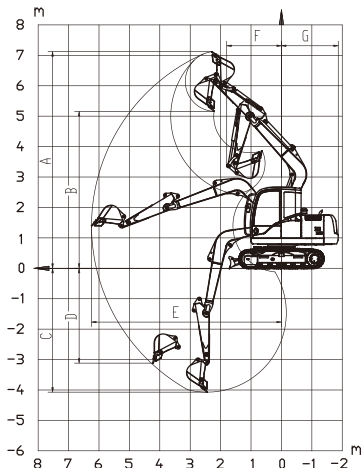
Lifting point height (m)	Rated lift capacity-Straight ahead(back)(kg)					Lifting capacity at maximum radius	Rated lift capacity-Over side(kg)					Lifting capacity at maximum radius
	Lifting point radius(m)						Lifting point radius(m)					
	1	2	3	4	5		1	2	3	4	5	
5			*1613			*1615			*1613			*1615
4			*1795	*1732		*1504			*1795	*1732		*1504
3			*2214	*1911		*1490			*2214	*1911		*1490
2			*2864	*2280	*1923	*1547			*2864	2096	1514	*1547
1			*3312	*2442	*2020	*1653			3129	2040	1489	*1653
Ground			*3513	*2586	*2076	*1874			3071	2001	1471	*1874
-1		*4283	*3460	*2580		*2158		*4283	3056	1987		*2158
-2		*4335	*3110			*2266		*4335	3076			*2266
-3		*15878				*2322		6722				*2322

Capacities marked with an asterisk (*) are limited by hydraulic capacities.



👤 : Over front
👤 : Over side or 360°

- 1.The lifting capacity is based on the ISO10567 standard.
- 2.* = The maximum lifting capacity is limited by the hydraulic capacity of the machine.
- 3.The lifting capacity does not exceed 87% of the hydraulic capacity or 75% of the tipping load with the machine on level and firm ground.
- 4.The operator should be familiar with the machines operating- and maintenance manual.Local regulations concerning the safe operation of machinery must be followed at all times.
- 5.The lift diagrams only covers machines that are originally built by XCMG; without lifting chains and any other lifting equipment.
- 6.When the excavator is used to lift or handle materials, it must comply with local.



Working range

	XE75U
A	Maximum Digging Height
B	Maximum Dumping Height
C	Maximum Digging Depth
D	Maximum Vertical Wall Digging Depth
E	Maximum Digging Radius
F	Minimum Swing Radius

Dimensions

	XE75U
A	Overall Length
B	Overall Width
C	Overall Height
D	Width of Platform
E	Track Length
F	Total Width of Chassis
G	Track Shoe Width
H	Crawler base
I	Track Gauge
J	Counterweight Clearance
K	Minimum Ground Clearance
L	Minimum Tail Swing Radius
M	Track Height



Dimensions & Working Range

Standard and Optional Equipment

Engine

Engine model	V2607
Emission level	Tier 4F
Manual preheating	●
Air cleaner (equipped with air cleaner blockage indicator)	●
Double filter element of air filter	●
Air prefilter	●
Collector type engine oil filter	●
Collector type big capacity ash fuel pre-filter	●
Collector type fuel main filter	●
Fan shroud	●
Radiator auxiliary water tank	●
Oil-water separator	●
Electronic fuel speed control	●
60A Alternator	●

Hydraulic system

Control valve with main overflow valve	●
Pilot filter	●
Oil suction filter	●
Accumulator	●
Boom/Arm flow regeneration	●
Hydraulic oil ISO VG 46	●
Rotary anti-sway valve	●
Instrument pressure monitor	●
Spare valve plate	●
Hydraulic pipeline: breaking hammer	○
Hydraulic oil ISO VG 32, 68	○

Cab and interior trim

AM - FM radio with digital display	●
All - weather soundproof steel structure cab	●
Ashtray	●
Beverage cup holder	●
Two stereo speakers	●
Engine key switch	●
Emergency hammer	●
Fire extinguisher support	●
Front window washer	●
Cleanable floor mat	●
Footrest board	●
Mechanical suspension seat with cloth cover	●
Openable front upper windshield	●
Removable front and lower windshield	●
Tempered glass sliding door and window	●
Intermittent windscreen wiper	●
Seat belt	●
Control handle	●
Travel control pedal with detachable manual control lever	●
Coat and hat hook	●
High and low gears shift	●
Sunshade	●
Storage box	●
Air conditioning system	●
Work aid reservation switch	●
Cigarette Lighter/Standby Power Supply	●
Top sunroof	●
Internal lighting in the cab	●
Document bag	●
Rearview mirror	●
LCD liquid crystal monitor	●
Fire extinguisher	○

Lighting lamp

Left boom working light	●
Right boom working light	○
Working light mounted in the cab	●

Counterweight

Counterweight	●
---------------	---

Safety and security configuration

Driving door locks and cabin locks	●
Alarm horn	●
Parking brake for walking	●
Rotary parking brake	●
Isolation plate between engine and pump chamber	●
Battery circuit breaker	●
Safety rails and pedals	●
Dozer retaining valve	●
Anti-skid/slip stickers	●
Hydraulic safety locking lever	●
Emergency escape hammer	●
Left and right rearview mirrors	●
Front work light	●
Roll over protection structure (ROPS)	●
Counterweight reflector	●
Boom, arm holding valve	○
Boom and arm pipe explosion-proof valve	○
Rotating warning light	○
Falling object protection structure (FOPS)	○

Chassis system and shield

Track tensioning mechanism	●
Bottom frame traction ring	●
450 mm three-rib track shoe	●
Bottom sealing plate of chassis	●
Walking motor sealing plate	●
Track clamp	●
Bulldozer shovel	●
Supporting chain wheel and supporting wheel	●
Track rubber block	○

Working device

Boom 3.72m	●
Arm 1.62m	●
Bucket 0.3m³ (ISO full bucket)	●
Bucket 0.18m³ (Deep groove bucket)	○
Quick connector	○
Breaking hammer	○
Hydraulic thumb pliers	○
Vibrating tamper	○
Hydraulic shear	○
High efficiency breaker	○
Clam shell bucket	○
Pipe grabber	○

Electrical system

Battery (1×120Ah)	●
2.5 kW start motor	●
12V power interface	●
Engine cooling water temperature display	●
Fuel level display	●
Engine speed display	●
Working hour meter	●
Engine oil pressure, engine overheat alarm	●
Charging indication	●
Air filter clogging alarm	●
Engine warm-up indication	●
Hydraulic oil temperature alarm	●
12V cigarette lighter	○

Other

Grease gun stand	●
Toolbox	●

Standard: ●
Optional: ○

·Some of these standard or optional equipment may not be available for certain markets.
·Pictures may include attachments and optional equipment that are not available in your area.
·Materials and specifications are subjected to change without advance notice.
·Please contact your local XCMG dealer for more information on availability or to customise your machine to suit your applications requirements.



Optimum Services, XCMG Guaranteed



XCMG approved attachments



Genuine parts



Extension of warranty



Financial solutions



Maintenance contract



Telematics



Monitoring systems

Professional integrated complete solutions

XCMG group has built a strong reputation based on the quality, reliability and durability of its construction machinery. What's more, XCMG has gradually established a service network to constantly provide its local integrated and highly efficient complete solutions for all customers.

Professional integrated complete solutions

In order to respond to your needs as fast as possible, XCMG experts are on their way to your job site from one of our facilities near you. Full range of services are available in order to reduce your total cost of ownership and increase your revenue.



XCMG Global Spare Parts System



Mobile cranes



Excavators



Aerial work platforms



Wheel loaders



Road machinery

