

# Hydraulic Excavators XE360U



XCMG FOR YOUR SUCCESS

Rated Power: 252 kW (338 hp)  
Operating Weight: 39 600 kg (87,303 lb)  
Bucket Capacity: 1.7 m<sup>3</sup> (2.2 yd<sup>3</sup>)

**XCMG NORTH AMERICA CORPORATION**  
Add: 5145 Schirrls St. Las Vegas, Nevada 89118  
Tel: +1 725 605 2777  
Fax: +1 725 605 2888  
E-Mail: bin@xcmg.com

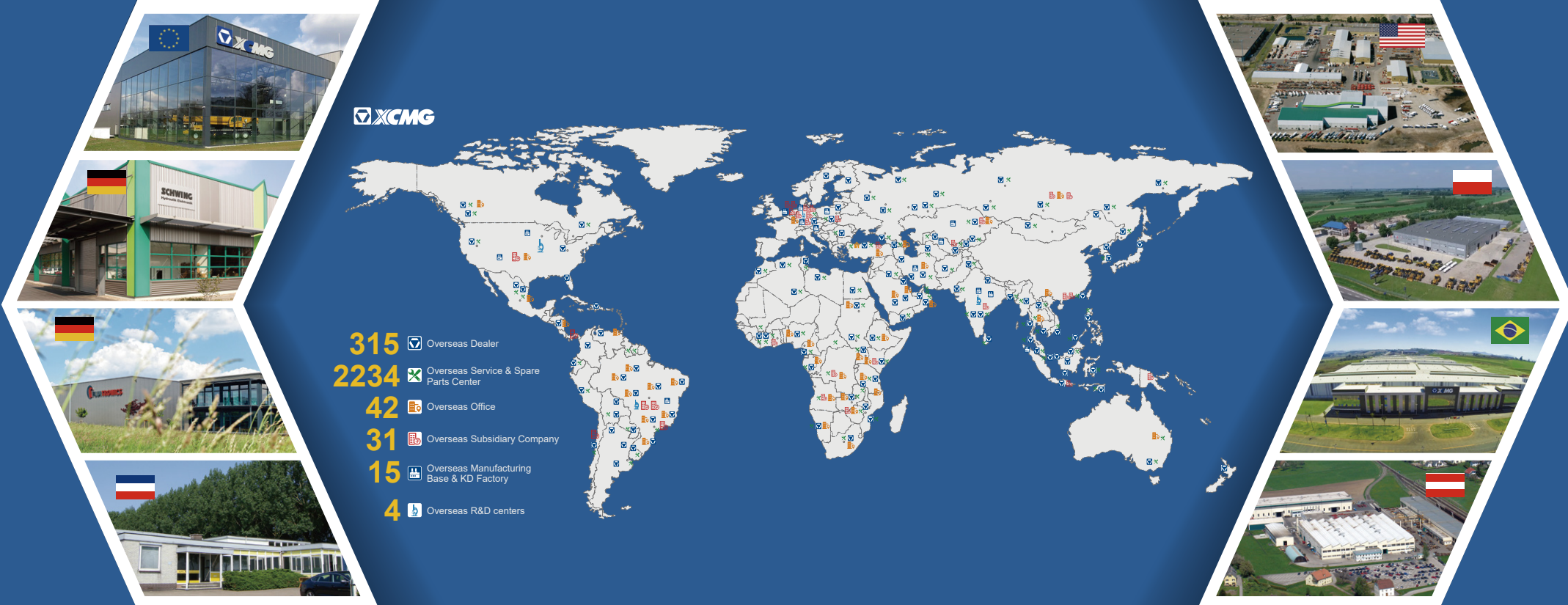
**XUZHOU CONSTRUCTION MACHINERY GROUP IMP. & EXP. CO., LTD**  
Add: NO.1, Tuolanshan Road, Xuzhou Economic Developing Zone,  
Jiangsu, China 221004  
Tel: +(86) 516 8773 9285  
E-Mail: bin@xcmg.com



[www.xcmg.com](http://www.xcmg.com)







# INTRODUCTION OF XCMG

Founded in 1943, XCMG is the largest enterprise in the Chinese construction machinery industry. We offer the most diverse product line and the highest technological standards. We provide a comprehensive set of construction solutions, and we are the most internationally competitive firm in the industry. On KHL Yellow Table, we rank No. 1 in China and No.3 globally.

Across our offices in China, the US, Germany, India, and Brazil, XCMG has established a global collaborative research platform including national-level R&D facilities focused on advanced smart manufacturing technology. Our R&D team consists of top talents from around the globe. They are researching cutting-edge technologies such as new energy, unmanned driving and high-end parts. Our work has earned us numerous international patents and awards.

XCMG has the most comprehensive product line, meaning we can offer fully comprehensive solutions in 9 areas: hoisting, earthwork, road building & maintenance, mining, concrete & paving, tunnel-building & underground construction, high-altitude firefighting equipment & special-purpose vehicles, railway & bridge construction, sanitation engineering. All these solutions can be customized to suit our customers' needs.

At XCMG, our five-continent sales network gives our products worldwide visibility. We have 300 overseas distributors, over 10 overseas manufacturing bases and KD (Knockdown) factories, and products in more than 180 countries and regions. We supply our global customers with pre-sales, mid-sales and after-sales service, and a convenient, efficient one-stop financing and leasing service. XCMG's total annual exports and overseas income consistently come top of the industry in China.

We care deeply for the welfare of the people. We support numerous charitable causes, and are quick to the scene during disaster relief efforts.

XCMG is all set to become an eternal brand with our feet on the ground and eyes on the horizon. XCMG's ambition leads us forever forwards. XCMG is scaling its Everest, and is determined to reach the top.

The newly upgraded XE360U builds on its reputation as one of the most sold and appreciated large excavators of XCMG. All systems have been designed on the basis of harmonious matching of sufficient power, hydraulic flow, versatility, low fuel consumption and environmental protection features.

If you are looking for a tough machine from a durable brand you can trust to get your work done with efficiency, look no further than our XE360U. Its robust design and innovative features delivery the performance you expect to finish demanding jobs.





### Built to last

The robust design featuring state-of-the-art Cummins Tier 4 Final compliant engine, Kawasaki-KPM made main pump and valve, Nabtesco made travel motors and upgraded hydraulic system, coupled with reinforced boom, arm, structural parts, and enlarged cylinders makes the XE360U a reliable machine that will live up to your every expectation during digging, breaking, grading and various applications.

### Made to do more

Multiple sizes of buckets including 2.1 m<sup>3</sup>[2.8 yd<sup>3</sup>] Earthwork Bucket, 1.9/2.0 m<sup>3</sup> [2.5/2.6 yd<sup>3</sup>] Strengthened Bucket, and 1.8/1.9 m<sup>3</sup> [2.4/2.5 yd<sup>3</sup>] Rock Bucket give you more options in different jobsites. Further with a wide range of attachments, the machine has more to offer.

### Safety solutions

Every XCMG excavator is designed with safety as a priority and the machine features a standard ROPS and optional OPG certified cab with multiple guards meshes, rear view and right view cameras, emergency stop, guard rails, and LED working lights on boom and cab. Both the operator and people around the machine are well protected with these solutions.

### Optional features give you more

The XE360U comes with every feature that the operator would expect in the industry. Additionally, it can always surprise you with multiple optional equipment such as three types of arms suitable for digging and breaking, hydraulic thumb, timber grab, hydraulic shear, scrap shear, vibratory, etc.

### Easy-to-use attachments

As standard, single & dual way auxiliary hydraulic pipelines (AUX1) for attachments such as hammer, grapple; and dual way auxiliary hydraulic pipelines (AUX2) for rotating such as clamshell, shear. It costs no efforts to switch from attachments on the jobsites.

### Operator comfort

To ensure operator comfort, it offers a spacious cab with low noise and reduced vibration by silicon-filled viscous mount and excellent all-round visibility. Fully adjustable heated air suspension seat and air conditioner with two way air outlet and defroster as standard. The centralized control buttons and upgraded human machine interface make the control easier during the operations.

### Precise control

With 8 attachment modes, 3 power modes, proportional joysticks and a color LCD display with warning, filter/liquid refill and working hours information, the operator can finish demanding tasks with confidence and efficiency.

### Powerful engine

The reliable Cummins L9 T4F engine delivers exceptional power while reducing emissions and fuel consumption by adopting high pressure common-rail electronic injection system among other advanced technologies such as Diesel Particulate Filter (DPF) and associated regeneration system to achieve less emissions.

### Easy maintenance

The grouped filters and lubrication points for boom, arm and bucket, make daily maintenance efficient and safer at your jobsites. Further, electric auto lubrication system and arm centralized lubrication system reduce many efforts. All maintenance information can be displayed and reminded from the monitor for the operator.

### User friendly

The meticulously designed 8" LCD color display is optimized for efficient control. Besides, all other Human Machine Interface such as joysticks, panels, bottoms are ergonomically engineered to save time and efforts during operations.

### Reduced tail swing radius

The robust undercarriage, reinforced boom, arm and bucket, X-shape frame, and the adopting of specially processed wear resistant steel can protect the machine from hard rocks and debris, to improve durability and increase uptime.





# Excellent Performance and Fuel Economy

## The power – do not compromise

The XE360U makes handling your task efficient and comfortable.

The optimized Kawasaki-KPM hydraulic system makes sure that all that engine power is used in the best possible way by delivering accurate maximum pumping in a smooth way.

All that power has reliably increased the digging power, the lifting capacities, and the traction force.

Greater fuel efficiency means you can keep costs down and reduce environmental impacts.



## — POWER MATCH TECHNOLOGY

The XE360U is equipped with a Cummins L9 engine.

Famous for its excellent fuel efficiency, reliability, and long service life, it combines exceptional power output and high torque at low revs.

Selective Catalytic Reduction (SCR) technology - combined with a Diesel Particulate Filter (DPF) – ensures compliance with Tier 4 Final regulations.

If the engine is the heart of the excavator, the XICS (XCMG Intelligent Control System) is its brain – providing a perfectly synchronized communication link between the engine's ECU (Electronic Control Unit) and the hydraulic system. The CANBUS (Controller Area Network) system enables a constant flow of information between engine and hydraulic system, so that power is delivered exactly as needed.



## — FUEL ECONOMY TECHNOLOGY

- A choice between 3 power modes and 8 attachment modes guarantees optimum performance in all conditions.
- Electronic control of fuel consumption.
- The auto-idle function saves more fuel and reduces emissions.
- For optimum cooling, the fan speed is controlled by a viscous clutch that results in lower fan noise with better fuel efficiency.





### — Easy hydraulic maintenance:

- 2000/4000 hours of hydraulic oil replacement (according to hydraulic oil type)
- Replace the hydraulic oil return filter after 500hours
- Replacement of the hydraulic oil suction filter element after 2000 hours

### — Less engine service:

- 500 hours engine diesel filter replacement
- 500 hours engine oil and filter replacement
- The long service intervals guarantee limited downtime.



# First Choice for Comfort

The XE360U cabin is designed to support increased productivity with a spacious comfortable operator environment. The pressurized cab is ISO-certified for your safety and offers a comfortable heated fully adjustable air-suspension seat with several storage compartments and a clear all-round view of your jobsite. The reduced noise and vibration levels with automatic air-conditioning/climate-control will make your workday more easy and comfortable.



## Power

An industry-leading Cummins engine that saves on fuel and meets the Stage V/Tier 4 F emission regulations powers the XCMG XE360U.

## Advanced control technology

Ergonomic, advanced and simple-to-operate - Kawasaki's proportional joystick delivers ultra-precise and smooth control over all movements.

The orientation of the joystick's rollers and the buttons is adjustable.

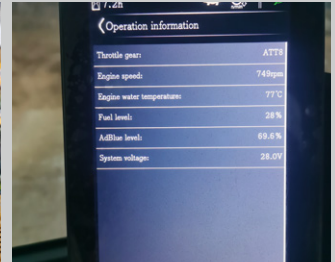
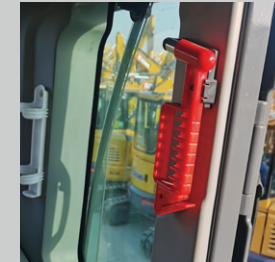


## Air conditioning with automatic climate control

A choice from 5 different working modes to regulate airflow to adjust the system's air temperature maintains the optimal desired temperature. A recirculated air function is also available.

## Bluetooth/MP3/USB radio as standard and DAB radio as option

Bluetooth FM radio is fitted as standard and DAB radio can be ordered optionally.



## Storage space

The new cab has 4 storage compartments - including a hot/cool box, a storage box for magazines/papers, and a cup holder.

## Cab suspension

Even at the roughest applications where you are working, the cab's improved new suspension system dampens and smoothens out unwanted feedback from your jobsite.

## Quick coupler control

A standard quick coupler hydraulic system with pipelines lets you exchange your attachment easily from the operator's seat. It facilitates the most common systems.



- 1 Operator's station
- 2 Ergonomic travel pedals
- 3 Heated air suspension seat
- 4 Power outlet
- 5 Throttle dial
- 6 All around AC and heating
- 7 (Bluetooth) AM/FM radio
- 8 Proportional hydraulic joystick
- 9 High quality speaker
- 10 Hammer control pedal
- 11 Engine stop switch
- 12 LCD color monitor
- 13 Safety lever
- 14 Cup holder



# Simple and Easy Control

## ► Machine interface

All machine interfaces – including joysticks, keypad, panel, and larger LCD monitor – are ergonomically designed for optimum control and efficiency, resulting in increased productivity and workplace wellbeing. The switches have been simplified and climate control is now integrated into the keypad for easy adjustments.

- The new multi-function 8" TFT LCD monitor displays a comprehensive range of useful technical information, allowing you to check the machine's status and settings at a glance.
- Highly sensitive and low-effort joysticks and clear convenient controls enable you to work smooth and safely with minimum effort for increased comfort and efficiency.
- The newly adjustable proportional auxiliary functions support precise and smooth control of your attachments.

## Intelligent monitor with touch screen

The upgraded 8" TFT monitor features a day and night display with full user access to the machine settings and maintenance data. Any abnormality is clearly displayed on the screen, allowing you to work safely and confident with an accurate overview of all conditions.

All-important data can be directly monitored from the main screen.

## Dynamic power management

- Activating the power boost control system increases digging force by 8.8%
- Auto-idling starts 4 seconds after all controls are returned to neutral, decreasing fuel consumption and reducing noise levels in the cab.



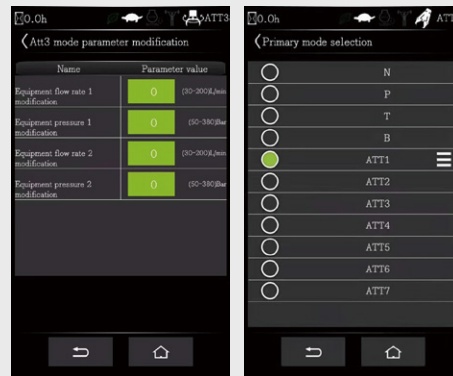
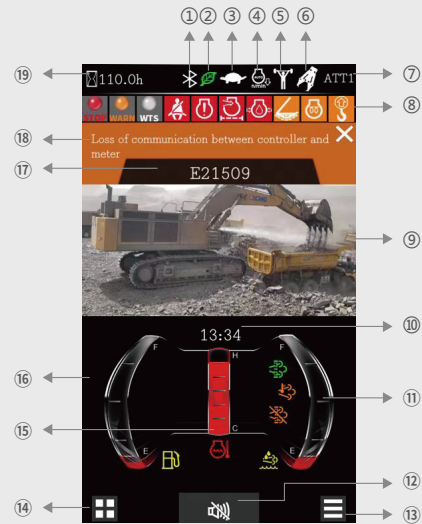
## 8 Attachment modes & 3 Power modes

Deliver the needed power according to your specific application while minimizing fuel consumption.

Multiple attachment modes are available, and the attachment configuration is more flexible.

One clicks mode for quick selection and more convenient operation. Visual adjustment of pressure and flow parameters, more intelligent control.

1. Bluetooth
2. Energy saving icon
3. Travel speed (H/L)
4. Automatic idle
5. Power boost
6. Work mode
7. Mode and gear
8. Notification icon
9. Camera
10. Time and date
11. Urea level
12. Mute button
13. Main interface set
14. Menu
15. Coolant temperature
16. Fuel level
17. Fault code area
18. Fault description
19. Hour meter



Air cleaner

Air cleaner: air filter life and engine efficiency are directly related to the amount of debris ingested through the engine's air intake. Therefore, the air cleaner (as standard) is the first stage of an air intake system that prevents the majority of heavier-than-air particles from entering.



## ► Designed for long-term robustness and safety

XCMG has developed one of the most rigorous strength and reliability testing procedures. The XCMG E-series features durability under the most extreme conditions and is therefore one of the most popular brands in its home market. We continually manufacture the most durable machines in order to reduce the cost of ownership. The robust upper frame, undercarriage structure, and front attachments show their real value in tough working conditions and guarantee higher productivity.

### Reinforced durability of the X-chassis

The X-shaped undercarriage has a higher durability than demanded on the jobsite, as proven through numerous tests including road tests and virtual simulation.

### Undercarriage durability with easy maintenance

- The chain is composed of sealed, self-lubricating links for long-term performance
- Long life track tensioners and the idlers
- Heavy-duty wear resistant cast sprockets
- Durable lubricated track rollers

### Strengthened boom and arm

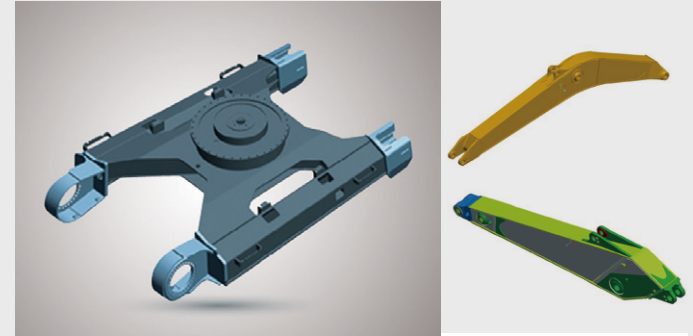
FEA has been used to calculate the best load distribution throughout the machine's structure. For better protection of the base of the arm, reinforced bars have been added. The arm structure has been strengthened for the roughest conditions.

### Hi-grade (high-pressure) hoses

The U-series uses a new type of high-pressure hoses with improved heat and pressure resistance to increase the durability of the machine.

### Reinforced pin, bush, and polymer shim

The new series improved the lubricity of connecting parts between the machine and attachments. Gaps with attachments are minimized by wear-resistant long-life pins, bushes and polymer shims, supporting the highest performance with invariable durability.





# Maintenance

## ► Excellent serviceability

Our machines are designed for simple routine maintenance, while skilled XCMG technicians are available to provide extra support if needed. To get the most out of your machine, choose the package you need from a broad range of service agreements. Uptime, productivity and residual value are all maximized, making the XE360U an economical and rewarding choice.

### Simple and easy maintenance

- Large guard rails are installed along with anti-slip steps and plates, for safer, easier access to the whole upper structure.
- The cab's air-conditioning filter is lockable and placed on the cab's side for easy access.
- A battery cut-off switch to easily disconnect the battery for long-term storage.
- Shut off valves on the pre-filter piping line and fuel tank drain piping make servicing easier and prevent pollution from leakage.
- The engine parts can be reached easily via the top and side panels.
- For extra accessibility and servicing convenience, all filters (engine oil filter, fuel pre-filter, fuel filter, and hydraulic pilot filter) are located in the pump compartment.

Adoption of the new Donaldson PowerCoreR air filter greatly extends the service life of the filter element, reduces the maintenance frequency, and reduces the user's maintenance costs.

### Pre-start monitoring system

The XE360U has a pre-start monitoring system that shows you coolant temperature, hydraulic oil temperature, engine oil pressure, fuel levels, and the AdBlue® level. It will also indicate fluid and filter intervals to keep the machine in top performing condition.

### Proactive aintenance solutions

- Extended warranty: covering parts, travel and labor.
- Routine maintenance: your dealer will support you with routine service at regular intervals.
- Genuine parts: manufactured and tested to ensure they always meet the same high quality standards as the original components.

### SCR tank and easy diesel filling

The ECU (Engine Control Unit) monitors the AdBlue® system with sensors and warns the operator of potential system malfunctions.

### Centralized lubrication greasing points

To make maintenance easier.











# Technical Specifications

## Engine

Designed to deliver superior performance and fuel efficiency, the Cummins Stage V diesel engine fully meets the emissions regulations. To optimize machine performance, the engine uses high-pressure fuel injectors, an air-to-air inter-cooler, and electronic engine controls. 4-cycle water-cooled, turbocharged, and Selective Catalytic Reduction (SCR) with a Diesel Particulate Filter (DPF).

### XE360U

Model	Cummins L9
No. of cylinders	6
Rated power at 1800 rpm	-
(SAE J1995)	252 kW (338 hp) at 1800 rpm
(SAE J1349)	—
(ISO 9249)	228 kW (306 hp) at 1800 rpm
Max. torque at 1400 rpm	1526 N·m(1126 lb·ft)
Idle (low - high)	700 - 1200 rpm
Piston displacement	8.9 Liters (543 in³)
Bore × stroke	114 mm (4.49 in) × 145 mm [5.69 in]
Starter	24 V / 7.8 kW
Batteries - Alternator	2 × 12 V, 150 Ah - 24 V, 70 A
Air Filter	Donaldson's the latest PSD air filter and pre-filtered dust separator

## Weight

### XE360U

	Shoe width (mm/in.)	Operating weight (kg/lb)	Ground pressure (kgf/cm²) (psi)
Triple grouser	600/24"	38 600/85,098	0.71/10.1
	700/28"	39 000/85,979	0.61/8.7
	800/31"(Std)	39 600/87,302	0.54/7.7
Double grouser	600/24"	39 500/87,082	0.72/10.2
	800/31"	40 500/89,286	0.55/7.8

## Hydraulic system

The XICS (XCMG intelligent Control System) is the brain of the excavator - minimizing fuel consumption and enabling the efficiency of the hydraulic system to be optimized for all working conditions. To harmonize the operation of the engine and the hydraulics, the XICS is connected to the engine's electronic control unit (ECU) via a data transfer link.

- The hydraulic system enables independent or combined operations – 2-speed travel offers either increased torque or high travel speed
- A cross-sensing pump system and an auto-deceleration system improve fuel efficiency
- 8 attachment modes, 3 power modes - flow and pressure control of auxiliary hydraulic circuits from control panel
- Computer-controlled pump flow control

### › Pumps flow & system pressure

#### XE360U

Main Pumps, type:	2 × variable displacement tandem axial piston pumps
Maximum flow at 1800 rpm	2 × 324 L/min (2 × 85.6 gal/min)
Pilot pump, type:	Gear pump
Maximum flow at 1800 rpm	27 L/min (7.1 gal/min)
Relief valve settings:	
Pressure up	350/380 kgf/cm² (4,978/5,405 psi)
Travel	350 kgf/cm² (4,978 psi)
Swing	270 kgf/cm² (3,840 psi)
Pilot	40 kgf/cm² (569 psi)

## Undercarriage

Extremely robust construction throughout - made of high-quality, durable materials, with all welded structures designed to limit stresses.

- Lifetime lubricated track rollers, idlers and sprockets fitted with floating seals
- Track shoes made of induction-hardened alloy with triple grouser
- Heat-treated connecting pins
- Hydraulic track adjuster with shock-absorbing tension mechanism

### › Number of rollers and track shoes per side

#### XE360U

Upper rollers (standard shoe)	2
Lower rollers	9
Number of links & shoes per side	49
Link pitch	216 mm (8.5")
Overall track length	5 067 mm (16'7")

## Cab

Optimal climate control is provided by the integrated air-conditioning and heating system. An automatically- controlled fan supplies the pressurized and filtered cab air, which is distributed throughout the cab from multiple vents. The fully adjustable heated air suspension operator's seat includes a seat belt. The operator can adjust the ergonomic seat and joystick console separately according to his preferences.

### › Noise emission

#### XE360U

Noise level LpA (ISO 6396)	76 dB(A)
Noise level LwA (ISO 6395)	104 dB(A)





# Technical Specifications

## Component weights

Item	Unit	XE360U	Remarks
Upper structure without front	kg/lb	16 858/37,165	With counterweight
Lower structure assembly	kg/lb	13 627/30,042	800 mm/31" shoe
Front assembly	kg/lb	6 502/14,334	Without cylinder
Counterweight	kg/lb	6 900/15,212	standard counterweight
Boom	mm / kg (ft/lb)	6 400/2 914 (20'12"/6,424)	Including bushing
Arm	mm / kg (ft/lb)	3 200/1 935 (10'6"/4,266)	Including bushing
		2 900/1 844 (9'6"/4,065)	Including bushing
		2 670/1 802 (8'9"/3,973)	Including bushing

## Drive

An independent, high-torque axial piston motor through a planetary reduction gearbox drives each track. Two levers with foot pedals guarantee smooth travel with counter-rotation on demand. The track frame protects the travel motors with hydraulically released multi-disc brakes and planetary gears.

### > Speed & traction

#### XE360U

Travel speed (low - high)	3.2- 5.4 km/h (2-3.4 mph)
Maximum traction	30 tnf (66,139 lbf)
Maximum gradeability	35° / 70%

## Hydraulic cylinders

High-strength steel piston rods and cylinder bodies. A shock-absorbing (cushion) mechanism fitted in all cylinders for shock-free operation and extended piston life.

Cylinders	Quantity	Bore × rod diameter × stroke (mm/in.)
Boom	2	150 × 105 × 1560 (5.9 × 4.1 × 61.4)
Arm	1	170 × 115 × 1720 (6.7 × 4.5 × 67.7)
Bucket	1	150 × 105 × 1250 (5.9 × 4.1 × 49.2)

## Buckets

Bucket Type	Capacity (m³/yd³) SAE	Width(mm/ft)		Weight (kg/lb)	Boom 6.4 m/20'12"		
		With side cutters	W/o side cutters		Arm 3.2 m/10'6'	Arm 2.9 m/9'6"	Arm 2.67 m/8'9"
					Shoe 800 mm/31"	Shoe 800 mm/31"	Shoe 800 mm/31"
GP	2.1/2.75	1 719/5'8"	1 660/5'5"	1 922/4,237	C	C	B
HD	1.9/2.49	1 539/5'1"	1 480/4'10"	1 795/3,957	B	A	A
	2.0/2.62	1 639/5'5"	1 580/5'2"	1 796/3,959	C	B	B
SD	1.7/2.22	1 349/4'5"	1 290/4'3"	1 570/3,461	A	A	A
	1.8/2.35	1 469/4'10"	1 410/4'8"	1 830/4,034	A	A	A
	1.9/2.49	1 539/5'1"	1 480/4'10"	1 795/3,957	B	A	A

## Swing mechanism

The swing mechanism uses an axial piston motor, driving a 2-stage planetary reduction gear for maximum torque bathed in oil.

- Swing bearing: single-row, shear type ball bearing with induction hardened internal gear
- Internal gear and pinion immersed in lubricant

### > Swing speed & torque

#### XE360U

Maximum swing speed	9.9 rpm
Maximum swing torque	105.5 kN·m (77,813 ft·lb)

### > Fluid capacities

#### XE360U

Fuel tank	540 L (143 gal)
Cooling system (radiator)	34 L (9 gal)
Urea (DEF) tank	65 L (17 gal)
Hydraulic oil tank	320 L (85 gal)
Engine oil	30 L (8 gal)
Swing drive	12.5 (3.3 gal)
Travel device	2 × 10 (2 × 2.6 gal)

GP: General purpose; HD: Heavy duty; SD: Severe duty;

A: Suitable for materials with a density from 1800-2100 kg/m³ (112.37 to 131.1 lb/ft³)

B: Suitable for materials with a density from 1500-1800 kg/m³ (93.6 to 112.37 lb/ft³)

C: Suitable for materials with a density less than 1500 kg/m³ (93.64 lb/ft³)

Based on ISO 10567 and SAE J296, arm length without quick-coupler. For reference only.



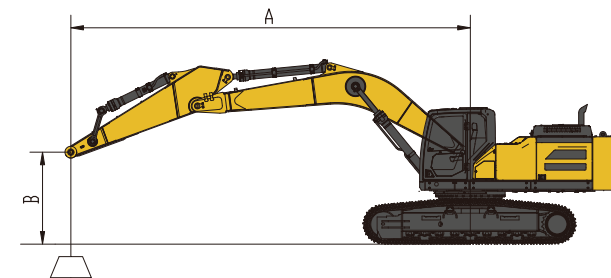


# Lifting Capacities

## XE360U

Model: Rated lift capacity (kg/lb) of XE360U standard track width: 3 390mm (11'1")· W/o bucket

Lph(m/ft)	Lpr (m/ft)	A	3.0 m (9.8 ft.)		4.5 m (14.8 ft.)		6.0 m (19.7 ft.)		7.5 m (24.6 ft.)		9.0 m (27.5 ft.)		Max. reach		A(m/ft)
		B													
One-piece boom 6.4 m/20'12" Boom 3.2 m/10'6" Arm 800 mm/31" shoe Counterweight 6.9 t (15,212 lb)	7.5/24.6								*8 387 18,494	7 173 15,816			*7 003 15,442	6 648 14,659	7.8/25.6
	6/19.7								*8 515 18,776	7 109 15,675			*6 753 14,891	5 584 12,234	8.6/28.2
	4.5/14.8				*12 855 28,345	*12 855 28,345	*10 384 22,897	9 559 21,077	*9 136 20,144	6 847 18,098	*8 523 18,792	5 136 11,324	*6 751 14,886	5 839 12,876	9.2/30.2
	3/9.8				*16 376 36,108	13 362 29,464	*12 012 26,487	8 945 19,723	*9 979 22,004	6 532 14,402	8 459 18,652	5 005 11,037	*6 951 15,327	4 626 10,200	9.4/30.8
	1.5/4.9				*18 798 41,451	12 331 27,190	*13 465 29,690	8 436 18,602	*10 798 23,800	6 253 13,787	8 299 18,299	4 861 10,719	*7 370 16,251	4 522 9,972	9.4/30.8
	Ground				*19 644 43,315	11 944 26,336	*14 322 31,580	8 096 17,852	10 582 23,333	6 028 13,291	8 184 18,046	4 758 10,492	7 910 17,441	4 610 10,165	9.2/30.2
	-1.5/-4.9				*12 953 28,562	*12 953 28,562	*19 313 42,584	11 901 26,241	*14 421 31,798	7 970 17,574	10 525 23,208	5 978 13,182	8 531 18,810	4 945 10,904	8.7/28.5
	-3/-9.8				*20 961 46,219	*20 961 46,219	*17 931 39,539	12 045 26,560	*13 642 30,081	8 034 17,715	*10 531 23,220	6 028 13,291	*9 654 21,286	5 668 12,498	7.9/25.9
	-4.5/-15				*20 186 44,510	*20 186 44,510	*15 109 33,316	12 433 27,415	*11 361 25,052	8 324 18,355			*9 622 21,216	7 294 16,084	6.6/21.7



: Over front  
 : Over side or 360°

Model: Rated lift capacity (kg/lb) of XE360U standard track width: 3 390mm (11'1")· W/o bucket

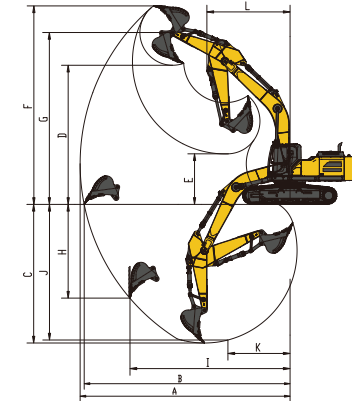
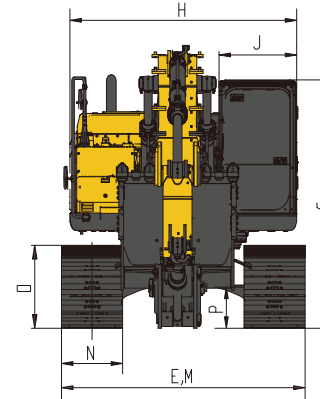
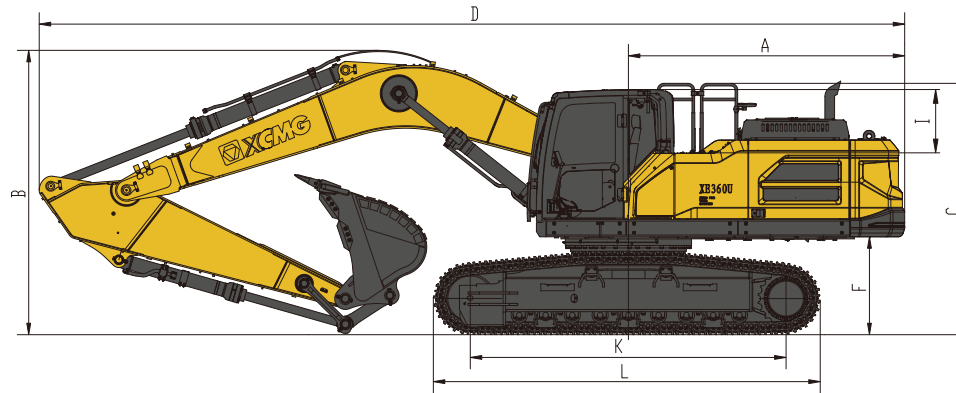
Lph(m/ft)	Lpr (m/ft)	A	3.0 m (9.8 ft.)		4.5 m (14.8 ft.)		6.0 m (19.7 ft.)		7.5 m (24.6 ft.)		9.0 m (27.5 ft.)		Max. reach		A(m/ft)
		B													
One-piece boom 6.4 m/20'12" Boom 2.67 m/8'9" Arm 800 mm/31" shoe Counterweight 6.9 t (15,212 lb)	7.5/24.6												*8 970 19,775	7 621 16,801	7.1/23.3
	6/19.7						*8 308 18,316	*8 308 18,316	*9 265 20,426	6 884 15,176			*8 947 19,725	6 146 13,549	8/26.2
	4.5/14.8				*14 530 9,987	14 144 31,182	*11 264 24,833	9 280 20,459	*9 747 21,488	6 672 14,709			*9 059 19,971	5 378 11,856	8.6/28.2
	3/9.8						*12 779 28,173	8 726 19,237	*10 473 23,089	6 382 14,070			8 515 18,772	4 993 11,008	8.9/29.2
	1.5/4.9						*13 990 30,842	8 272 18,236	10 712 23,616	6 141 13,538			8 373 18,459	4 870 10,736	8.9/29.2
	Ground				*19 649 43,318	11 930 26,301	*14 507 31,982	8 029 17,701	10 518 23,188	5 972 13,166			8 637 19,041	4 987 10,994	8.6/28.2
	-1.5/-4.9				*14 412 31,773	*14 412 31,773	*18 782 41,407	11 937 26,316	*14 256 31,429	7 970 17,571			9 483 20,906	5 408 11,922	8.1/26.6
	-3/-9.8				*22 111 48,746	*22 111 48,746	*16 908 37,275	12 173 26,837	*13 008 28,677	8 088 17,831			*10 322 22,756	6 397 14,103	7.2/23.6
	-4.5/-15				*17 047 37,582	*17 047 37,582	*13 294 29,308	12 609 27,798					*10 033 22,119	8 891 19,601	5.8/19

1. The lifting capacity is based on the ISO10567 standard.
2. \* = The maximum lifting capacity is limited by the hydraulic capacity of the machine.
3. The lifting capacity does not exceed 87% of the hydraulic capacity or 75% of the tipping load with the machine on level and firm ground.
4. The operator should be familiar with the machines operating- and maintenance manual. Local regulations concerning the safe operation of machinery must be followed at all times.
5. The lift diagrams only covers machines that are originally built by XCMG: without lifting chains and any other lifting equipment.
6. When the excavator is used to lift or handle materials, it must comply with local regulations.





# Technical Specifications



## Dimensions

XE360U		mm/ft		
Boom length - mm/ft		6 400/20'12"		
Arm length - mm/ft		3 200/10'6"	2 900/9'6"	2 670/8'9"
Bucket capacity - m³/yd³		1.7/2.22	1.9/2.49	1.9/2.49
A	Tail swing radius	3 618/11'10"	3 618/11'10"	3 618/11'10"
B	Shipping height (boom)	3 724/12'3"	3 715/12'2"	3 715/12'2"
C	Shipping height (guardrail)	3 292/10'10"	3 292/10'10"	3 292/10'10"
D	Shipping length	11 335/37'2"	11 437/37'6"	11 437/37'6"
E	Shipping width	3 390/11'1"	3 390/11'1"	3 390/11'1"
F	Counterweight clearance	1 282/4'2"	1 282/4'2"	1 282/4'2"
G	Height over cab	3 379/11'1"	3 379/11'1"	3 379/11'1"
H	Upper structure width	2 970/9'9"	2 970/9'9"	2 970/9'9"
I	Cab height above house	830/33"	830/33"	830/33"
J	Cab width	1 015/3'4"	1 015/3'4"	1 015/3'4"
K	Tumbler distance	4 138/13'7"	4 138/13'7"	4 138/13'7"
L	Track length	5 067/16'7"	5 067/16'7"	5 067/16'7"
M	Undercarriage width	3 390/11'1"	3 390/11'1"	3 390/11'1"
N	Shoe width std.	800/31"	800/31"	800/31"
O	Track height	1 086/3'7"	1 086/3'7"	1 086/3'7"
P	Ground clearance	538/21"	538/21"	538/21"

## Working range

XE360U		mm/ft		
Boom length - mm/ft		6 400/20'12"		
Arm length - mm/ft		3 200/10'6"	2 900/9'6"	2 670/8'9"
Bucket capacity - m³/yd³		1.7/2.22	1.9/2.49	1.9/2.49
A	Max. digging reach	11 244/36'11"	10 968/35'12"	10 649/34'11"
B	Max. digging reach (ground)	11 027/36'2"	10 751/35'3"	10 420/34'2"
C	Max. digging depth	7 423/24'4"	7 147/23'5"	6 886/22'7"
D	Max. loading height	7 452/24'5"	7 300/23'11"	6 987/22'11"
E	Min. loading height	2 708/8'11"	2 970/9'9"	3 240/10'8"
F	Max. digging height	10 630/34'11"	10 508/34'6"	10 090/33'1"
G	Max. bucket pin height	9 205/30'2"	9 060/29'9"	8 736/28'8"
H	Max. vertical wall depth	5 018/16'6"	4 632/15'2"	4 226/13'10"
I	Max. radius vertical	8 570/28'1"	8 516/27'11"	8 463/27'9"
J	Max. digging depth (8' level)	7 258/23'10"	6 982/22'11"	6 707/22'
K	Min. radius 8' line	3 312/10'10"	3 322/10'11"	3 328/10'11"
L	Min. swing radius	4 456/14'7"	4 560/14'12"	4 560/14'12"

## Digging forces (ISO)

XE360U		mm/ft		
Boom length - mm/ft		6 400/20'12"		
Arm length - mm/ft		3 200/10'6"	2 900/9'6"	2 670/8'9"
Bucket capacity - m³/yd³		1.7/2.22	1.9/2.49	1.9/2.49
Bucket (Normal/Press. Up) - kN/lbf		249/268 55,977/60,249	249/268 55,977/60,249	249/268 55,977/60,249
Arm (Normal/Press. Up) - kN/lbf		172/186 38,667/41,814	191/206 42,939/46,311	211/227 47,435/51,032

>Standard and Optional Equipment

Engine	
Urea tank AD Blue	●
Auto-preheating	●
Fuel-water separator with water level instruction sensor	●
Radial seal air cleaner	●
Air prefilter	●
The cooling assembly in 50°C (122°F) ambient temperature	●
Dust screen for radiator	●
Fuel oil gauge	●
Fuel-water quickly release device	●
Coolant heater (Diesel)	○
Fuel-water separator with heater(24 V)(Optional when temperature is below 25°C(77°F))	○
Electronically controlled silicone oil clutch	●
Fuel filling pump	○
Air pressure difference indicator	●
Auto idle	●

Cab & interior	
Pressurized cab	●
Air suspension seat with heater	●
Control box on left and right	●
Rain visor (Not mounted when front upper guard exists)	●
Front windshield divided by 70/30 ratio	●
Double laminated windshield glass and other tempered glass(New appearance:all tempered glass)	○
Sliding upper door window	●
Air conditioner with two way air outlet and defroster [Automatic][Pressurized ]	●
Color LCD display with warning,filter / liquid refill and working hours information	●
Travel control pedal with detachable manual control lever	●
Double stereo speaker	●
Cup holder	●
Coat hook	●
Washable floor mat	●
Retractable safety belt	●
High and low travel speed switch	●
One-key boost	●
Reserved switch for working attachment	●
Sun visor	●
Skylight	●
Multi-gear windshield wiper with intermittent feature	●
File packet	●
Emergency exit on rear window	●
Hammer for emergency escape	●

Conterweight	
6.9 t (15,212 lb)counterweight	●

Lubrication system	
Electric auto lubrication system	○
Boom & arm centralized lubrication system	●

Hydraulic system	
Auxiliary hydraulic valve	●
Single or dual way pipeline	●
Quick coupler piping	●
Rotary attachment piping	●
Hydraulic oil ISO VG 46	●
Hydraulic oil ISO VG 32	○
Hydraulic oil ISO VG 68	○
Electric proportional joysticks on the left and right	●
Spare valve plate	●
Pressure monitor gauge	●
Instrument control for pipeline flow of AUX1 and AUX2	●
Instrument control for pipeline pressure of AUX1	●
Instrument control for pipeline pressure of AUX2	○

Boom, arm and bucket	
Boom-6.4 m(20'20")	●
Arm-3.2 m(10'6")	●
Rock bucket-1.7 m³ (2.22 yd³)/1 400 mm(4'7")	●
Arm-2.9 m(9'6")	○
Arm-2.67 m(8'9")	○
Rock bucket-1.8 m³ (2.35 yd³)/1 574 mm(5'2")	○
Rock bucket-1.9 m³ (2.5 yd³)/1 660 mm(5'5")	○
Earth work bucket-2.1 m³ (2.75 yd³)/1 745 mm(5'9")	○
Thumb	○
Breaking Hammer	○
Scarifier	○
Hydraulic shear	○
Orange peel grab	○
Timber grab	○
Vehicle dismantling shear	○
Straight breaking hammer	○
Scrap shear	○
Crushing pliers	○
Hydraulic vibrate compactor	○

Undercarriage	
Triple track guards for each side	●
2×9 bottom rollers	●
2×2 carrier rollers	●
Tow ring on the bottom frame	●
2×49 joints , track with triple grouser shoes, 800 mm(31")	●
Guard kits: Bottom sealing plate of undercarriage, sealing plate of travel motor	●
Track with double grouser shoes, 600 mm(24")	○
Track with double grouser shoes, 700 mm(28")	○
Track with double grouser shoes, 800 mm(31")	○
Track with triple grouser shoes, 700 mm(28")	○

Electrical system	
Battery (2×850 CCA)	●
70 A alternator	●
7.8 kW starter motor	●
12 V Electric power interface	●
USB interface(5 V)	●
Emergency stop switch	●
Rightview camera	●
Rearview camera	●
AM-FM radio with buletooth	●
DAB bluetooth digital radio	○
Travel buzzer with switch	●
Rotating beacon	●
Two front working light and one rear working light on the cab(LED)	●
Two working lights on the boom(LED)	●
Interior light	●

Safety and guards	
Anti collision beam	●
Lock for the cab door and each cabin	●
Warning horn	●
The quick coupler button with warning	●
Isolation plate between engine and pump chamber	●
Battery disconnect switch	●
Overheating warning	●
Safety handrail and pedals	●
Anti-skid plate/ anti-skid paste	●
Hydraulic safety locking lever	●
Left and right rearview mirrors	●
Counterweight rearview mirror	○
Anti-burst valve on the boom	●
Anti-burst valve on the arm	●
Roll over protective structure(ROPS)	●
Operator protective guard	○
Top protective net	○
Protective net on upper front windshield(Bar type)	○
Protective net on lower front windshield(Bar type)	○
Protective net on lower front windshield(Grid type)	●

Remarks:

1. 1.9 m <sup>3</sup>/2.49 yd<sup>3</sup> reinforced bucket and 2.9 m/ 9'6" arm are recommended at the same time;
2. 1.9 m <sup>3</sup>/2.49 yd<sup>3</sup> rock bucket and 2.67 m/8'9" arm are recommended at the same time;
3. 2.1 m <sup>3</sup>/2.75 yd<sup>3</sup> earth bucket and 2.67 m/8'9" arm are recommended at the same time.

Standard: ●

Optional: ○

· Some of these standard or optional equipment may not be available for certain markets.

· Pictures may include attachments and optional equipment that are not available in your area. · Materials and specifications are subjected to change without advance notice.

· Please contact your local XCMG dealer for more information on availability or to customise your machine to suit your applications requirements.



# Optimum Services , XCMG Guaranteed



XCMG approved attachments



Genuine parts



Financial solutions



Maintenance contract



Telematics



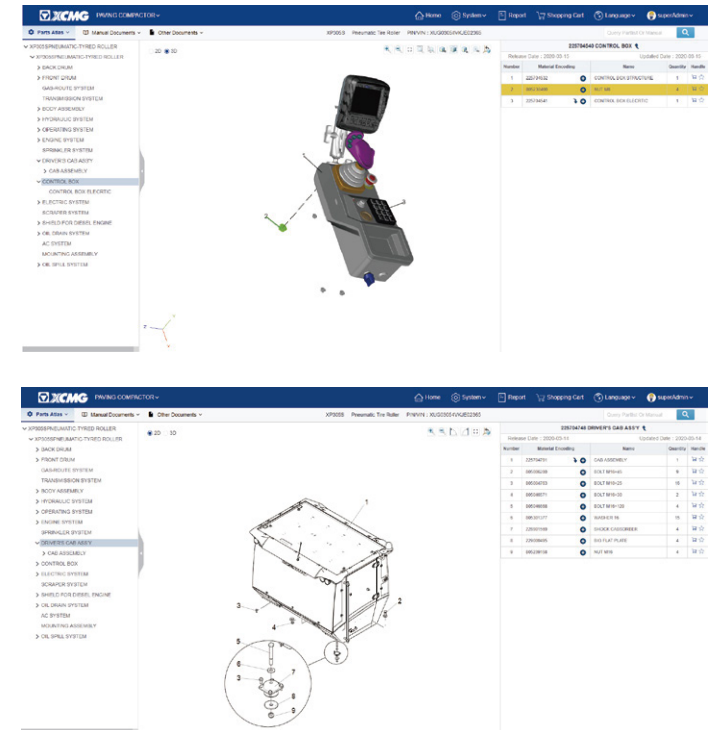
## Professional Integrated Complete Solutions

XCMG group has built a strong reputation based on the quality, reliability and durability of its construction machinery. What's more, XCMG has gradually established a service network to constantly provide its local integrated and highly efficient complete solutions for all customers.

## Full Range of Services Ready for you

In order to respond to your needs as fast as possible, XCMG experts are on their way to your job site from one of our facilities near you. Full range of services are available in order to reduce your total cost of ownership and increase your revenue.

## XCMG Global Spare parts System



Mobile cranes



Excavators



Aerial work platforms



Wheel loaders



Road machinery







# XCMG

XCMG FOR YOUR SUCCESS

