

Hydraulic Excavators XE300U



XCMG FOR YOUR SUCCESS

Rated Power: 173 kW (232 hp)
Operating Weight: 32 500 kg (71,650 lb)
Bucket Capacity: 1.6 m³ (2.1 yd³)

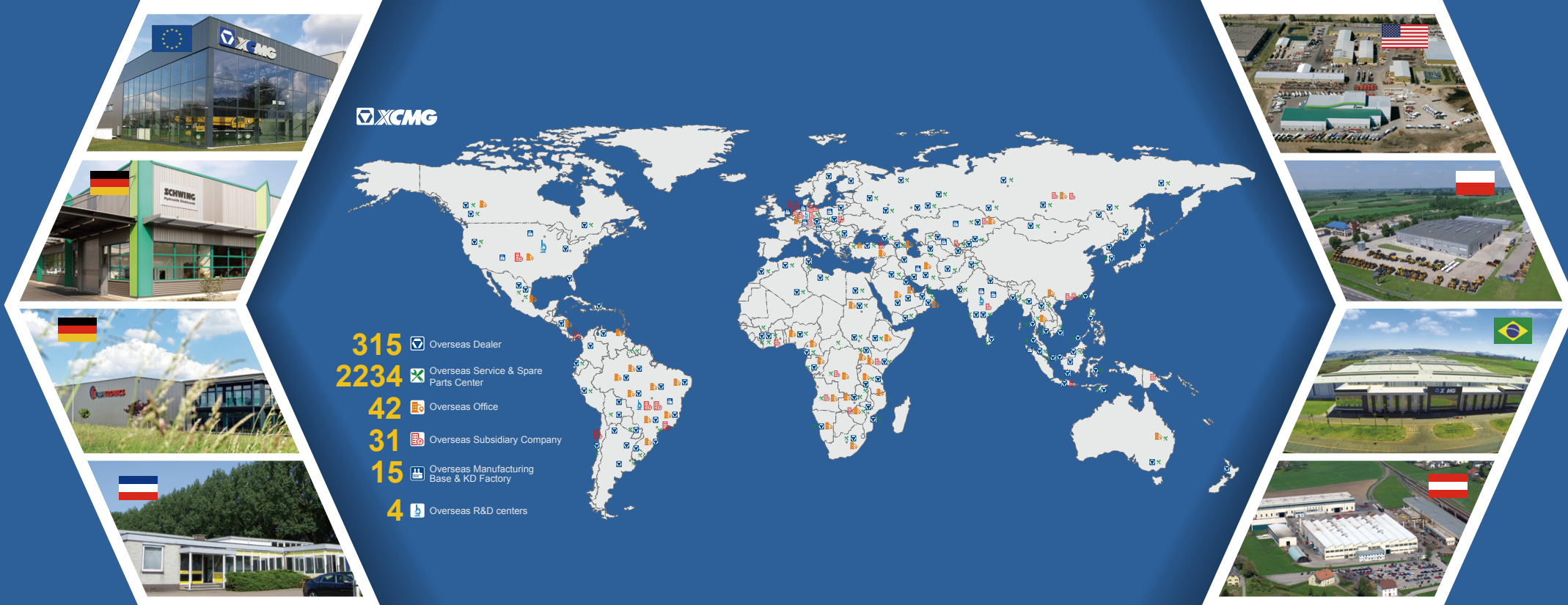
XCMG NORTH AMERICA CORPORATION
Add: 5145 Schirlls St. Las Vegas, Nevada 89118
Tel: +1 725 605 2777
Fax: +1 725 605 2888
E-Mail: bin@xcmg.com

XUZHOU CONSTRUCTION MACHINERY GROUP IMP. & EXP. CO., LTD
Add: N0.1, Tuolanshan Road, Xuzhou Economic Developing Zone,
Jiangsu, China 221004
Tel: +(86) 516 8773 9285
E-Mail: bin@xcmg.com



www.xcmg.com





INTRODUCTION OF XCMG

Founded in 1943, XCMG is the largest enterprise in the Chinese construction machinery industry. We offer the most diverse product line and the highest technological standards. We provide a comprehensive set of construction solutions, and we are the most internationally competitive firm in the industry. On KHL Yellow Table, we rank No. 1 in China and No.3 globally.

Across our offices in China, the US, Germany, India, and Brazil, XCMG has established a global collaborative research platform including national-level R&D facilities focused on advanced smart manufacturing technology. Our R&D team consists of top talents from around the globe. They are researching cutting-edge technologies such as new energy, unmanned driving and high-end parts. Our work has earned us numerous international patents and awards.

XCMG has the most comprehensive product line, meaning we can offer fully comprehensive solutions in 9 areas: hoisting, earthwork, road building & maintenance, mining, concrete & paving, tunnel-building & underground construction, high-altitude firefighting equipment & special-purpose vehicles, railway & bridge construction, sanitation engineering. All these solutions can be customized to suit our customers' needs.

At XCMG, our five-continent sales network gives our products worldwide visibility. We have 300 overseas distributors, over 10 overseas manufacturing bases and KD (Knockdown) factories, and products in more than 180 countries and regions. We supply our global customers with pre-sales, mid-sales and after-sales service, and a convenient, efficient one-stop financing and leasing service. XCMG's total annual exports and overseas income consistently come top of the industry in China.

We care deeply for the welfare of the people. We support numerous charitable causes, and are quick to the scene during disaster relief efforts.

XCMG is all set to become an eternal brand with our feet on the ground and eyes on the horizon. XCMG's ambition leads us forever forwards. XCMG is scaling its Everest, and is determined to reach the top.

The newly upgraded XE300U builds on its reputation as one of the most sold and appreciated excavators of XCMG. All systems have been designed on the basis of harmonious matching of sufficient power, hydraulic flow, versatility, low fuel consumption and environmental protection features.

If you are looking for a tough machine from a durable brand you can trust to get your work done with efficiency, look no further than our XE300U. Its versatile design and innovative features delivery the performance you expect to do various difficult jobs.



Built to last

The robust design featuring state-of-the-art Cummins Tier 4 Final compliant engine, XCMG engineered valves and motors, and upgraded hydraulic system, coupled with reinforced boom, arm, structural parts, and enlarged cylinders makes the XE300U a reliable machine that will live up to your every expectation during digging, breaking, grading and various applications.

Made to do more

Multiple sizes of buckets including 1.6 m³(2.1 yd³) Reinforced Bucket, 1.4/1.8 m³ (1.83/2.35 yd³) Rock Bucket give you more options in different jobsites. Further with a wide range of attachments, the machine has more to offer.

Safety solutions

Every XCMG excavator is designed with safety as a priority and the machine features a standard ROPS and optional OPG certified cab, rear view and right view cameras, emergency stop, guard rails, anti-burst valve, and LED working lights. Both the operator and people around the machine are well protected with these solutions.

Optional features give you more

The XE300U comes with every feature that the operator would expect in the industry. Additionally, it can always surprise you with multiple optional equipment such as two types of arms, hydraulic thumb, timber grab, hydraulic shear, scrap shear, vibratory, etc.

Easy-to-use attachments

As standard, single & dual way auxiliary hydraulic pipelines (AUX1) for attachments such as hammer, grapple; and dual way auxiliary hydraulic pipelines(AUX2) for rotating such as clamshell, shear.

Operator comfort

To ensure operator comfort, it offers a spacious cab with low noise and reduced vibration by silicon-filled viscous mount and excellent all-round visibility. Fully adjustable heated air suspension seat and air conditioner with defroster as standard. The centralized control buttons and upgraded human machine interface cost no efforts during the operations.

Precise control

With 7 attachment modes and 3 power modes and proportional joysticks, the operator can finish demanding tasks with confidence and efficiency.

Powerful engine

The reliable Cummins B6.7 T4F engine delivers exceptional power while reducing emissions and fuel consumption by adopting high pressure common-rail electronic injection system among other advanced technologies such as Diesel Particulate Filter (DPF) and associated regeneration system to achieve less emissions.

Easy maintenance

The grouped filters and centralized lubrication points for boom, arm and bucket, easily accessed from the ground level, make daily maintenance efficient and safer at your jobsites. And all maintenance information can be displayed and reminded from the monitor for the operator.

User friendly

The meticulously designed 8" LCD color display is optimized for efficient control. Besides, all other Human Machine Interface such as joysticks, panels, bottoms are ergonomically engineered to save time and efforts during operations.

Robust undercarriage

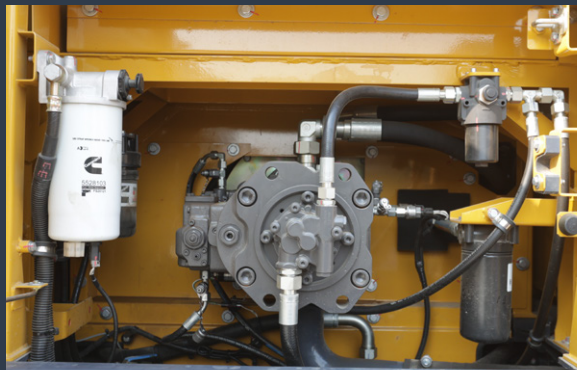
The robust undercarriage, reinforced boom, arm and bucket, X-shape frame, and the adopting of specially processed wear resistant steel can protect the machine from hard rocks and debris, to improve durability and increase uptime.



Excellent Performance and Fuel Economy

Power without compromise

- The XE300U makes handling your task efficient and comfortable.
- The optimized hydraulic system makes sure that all that engine power is used in the best possible way by delivering accurate maximum pumping in a smooth way.
- All that power has reliably increased the digging power, the lifting capacities, and the traction force.
- Greater fuel efficiency means you can keep costs down and reduce environmental impact.



POWER MATCH TECHNOLOGY

The XE300U is equipped with a Cummins B6.7 engine.

Famous for its excellent fuel efficiency, reliability and long service intervals it combines exceptional power output and high torque at low revs.

Selective Catalytic Reduction (SCR) technology - combined with a Diesel Particulate Filter (DPF) - ensures compliance with Stage V regulations.

If the engine is the heart of the excavator, the XICS (XCMG Intelligent Control System) is its brain – providing a perfectly synchronized communication link between the engine's ECU (Electronic Control Unit) and the hydraulic system. The CANBUS (Controller Area Network) system enables a constant flow of information between engine and hydraulic system, so that power is delivered exactly as needed.

FUEL ECONOMY TECHNOLOGY

- A choice between 3 power modes and 7 attachment modes guarantees optimum performance under all conditions.
- Electronic control of fuel consumption.
- The auto-idle function reduces the engine speed when the controls is inactive for a preselected amount of time or when the safety lever is switched off. The engine will immediately return to its original selected speed when the operator touches the controls.
- For optimum cooling, the fan speed is controlled by a viscous clutch that results in lower fan noise with better fuel efficiency



— Easy hydraulic maintenance:

- 2000/4000 hours of hydraulic oil replacement (depending on the hydraulic oil type)
- Replace the hydraulic oil return filter after 500 hours
- Replacement of the hydraulic oil suction filter element after 2000 hours

— Less engine service:

- 500 hours engine diesel filter replacement
- 500 hours engine oil and filter replacement
- The long service intervals guarantee limited downtime.

First Choice for Comfort

The XE300U cabin is designed to support increased productivity with a spacious comfortable operator environment. The pressurized cab is ISO-certified for your safety and offers a comfortable heated fully adjustable air-suspension seat with several storage compartments and a clear all-round view of your jobsite. The reduced noise and vibration levels with automatic air-conditioning/climate-control will make your workday more easy and comfortable.



POWER

An industry-leading Cummins engine that saves on fuel and meets the Stage V/Tier 4 F emission regulations powers the XCMG XE300U.

Advanced control technology

Ergonomic, advanced, and simple-to-operate - Kawasaki's proportional joystick delivers ultra-precise and smooth control over all movements. The orientation of the joystick's rollers and buttons are adjustable.

Air conditioning with automatic climate control

A choice from 5 different working modes to regulate the airflow and to adjust the system's air temperature maintains the optimal desired temperature. A recirculated air function is also available.

Bluetooth radio as standard and DAB radio as option

Standard Bluetooth FM radio. Optionally, we now also offer a radio with DAB function.

Storage space

The new cab has 4 storage compartments - including a hot/cool box, a storage box, a magazine/file holder, and a cup holder.

Cab suspension

Even at the roughest applications where you are working, the cab's improved new suspension system dampens and smoothens out unwanted feedback from your jobsite.

Quick coupler control

A standard quick coupler hydraulic system with pipelines lets you exchange your attachment easily from the operator's seat. It facilitates the most common systems.





- 1 Spacious operator space
- 2 Large travel pedal
- 3 Heated air suspension seat
- 4 Power outlet
- 5 All around AC and heating
- 6 Proportional hydraulic joysticks
- 7 High quality loudspeaker
- 8 Engine stop switch in the cab
- 9 Color LCD monitor
- 10 Storage compartments
- 11 Safety lever
- 12 Cup holder

Simple and Easy Control

> Machine interface

All machine interfaces – including joysticks, keypad, panel, and larger LCD monitor – are ergonomically designed for optimum control and efficiency, resulting in increased productivity and workplace wellbeing. The switches have been simplified and climate control is now integrated into the keypad for easy adjustments.

- The new multi-function 8" TFT LCD monitor displays a comprehensive range of useful technical information, allowing you to check the machine's status and settings at a glance.
- Highly sensitive and low-effort joysticks and clear convenient controls enable you to work smoothly and safely with minimum effort for increased comfort and efficiency.
- The new adjustable proportional auxiliary functions support precise and smooth control of your attachments.

Intelligent Monitor

The upgraded 8" TFT monitor features a day and night display with full user access to the machine settings and maintenance data. Any abnormality is clearly displayed on the screen, allowing you to work safely and confidently with an accurate overview of all conditions. All important data can be directly monitored from the main screen.

Dynamic power management

- Activating the power boost control system increases the digging force by 8.8%
- Auto-idling starts 4 seconds after all controls are returned to the neutral position

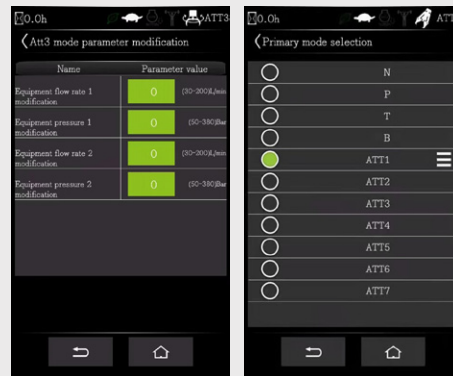
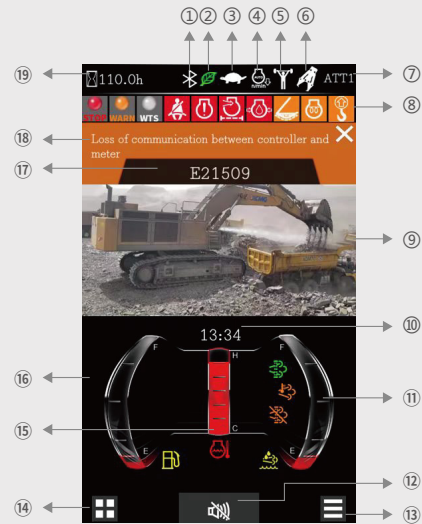


7 work modes and 3 power modes

Deliver the needed power according to your specific application while minimizing fuel consumption:

- N: Normal mode,
- H: Heavy-duty mode,
- S: Standard mode,
- Eco: Economy mode,
- T: High altitude mode,
- ATT1: Breaker/hammer mode,
- ATT2: Thumb plier mode,
- ATT3: Shear mode,
- ATT4/5: Auxiliary modes.

1. Bluetooth
2. Energy saving icon
3. Travel speed (H/L)
4. Automatic idle
5. Power boost
6. Work mode
7. Mode and gear
8. Notification icon
9. Camera
10. Time and date
11. Urea level
12. Mute button
13. Main interface set
14. Menu
15. Coolant temperature
16. Fuel level
17. Fault code area
18. Fault description
19. Hour meter



► Designed for long-term robustness and safety

XCMG has developed one of the most rigorous strength and reliability testing procedures. The XCMG U-series features durability under the most extreme conditions and is therefore one of the most popular brands in its home market. We continually manufacture the most durable machines in order to reduce the cost of ownership. The robust upper frame, undercarriage structure, and front attachments show their real value in tough working conditions and guarantee higher productivity.

Reinforced durability of the X-chassis

The X-shaped undercarriage has a higher durability than demanded on the jobsite, as proven through numerous tests including road tests and virtual simulation.

Undercarriage durability with easy maintenance

- The chain is composed of sealed, self-lubricating links for long-term performance
- Long life track tensioners and the idlers
- Heavy-duty wear resistant cast sprockets
- Durable lubricated track rollers

Strengthened boom and arm

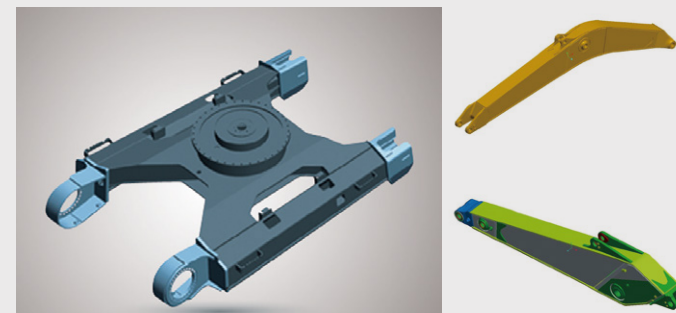
FEA has been used to calculate the best load distribution throughout the machine's structure. For better protection of the base of the arm, reinforced bars have been added. The arm structure has been strengthened for the roughest conditions.

Hi-grade (high-pressure) hoses

The U-series uses a new type of high-pressure hoses with improved heat and pressure resistance to increase the durability of the machine.

Reinforced pin, bush and polymer shim

The new series improved the lubricity of the connecting parts between the machine and attachments. Gaps with attachments are minimized by wear-resistant long-life pins, bushes, and polymer shims, supporting the highest performance with invariable durability.



Maintenance

► Excellent serviceability

Our machines are designed for simple routine maintenance, while skilled XCMG technicians are available to provide extra support if needed. To get the most out of your machine, choose the package you need from a broad range of service agreements. Uptime, productivity and residual value are all maximized, making the XE300U an economical and rewarding choice.

Simple and easy maintenance

- A large guard rails are installed along with anti-slip steps and plates, for safer and easier access to the whole upper structure
- The cab's air-conditioning filter is lockable and placed on the cab's side for easy access
- A battery cut-off switch to easily disconnect the battery for jobsite-required safety measures
- Shut-off valves on the pre-filter piping line and the fuel tank drain piping make servicing easier and prevents pollution from leakage
- The engine parts can be reached easily via the top and side panels
- For extra accessibility and servicing convenience, all filters (engine oil filter, fuel pre-filter, fuel filter and hydraulic pilot filter) are located in the pump compartment

Pre-start monitoring system

The XE300U has a pre-start monitoring system that shows you coolant temperature, hydraulic oil temperature, engine oil pressure, fuel levels, and the AdBlue® level. It will also show fluid and filter intervals to keep the machine in top performing condition.

Proactive maintenance solutions

- Extended warranty: covering parts, travel and labor
- Routine maintenance: your dealer will support you with routine service at regular intervals
- Genuine parts: manufactured and tested to ensure long lifetime of your machine.

SCR and easy diesel filling

The ECU (Engine Control Unit) monitors the AdBlue® system with sensors and warns the operator for potential system malfunctions. A fuel filler pump, an on-board pump system, lets you fill your fuel tank quickly from an external source (like a fuel drum) – the system stops automatically when the fuel tank is full or the fuel source is empty.

Centralized lubrication greasing points

To make maintenance easier.







Technical Specifications

Engine

Designed to deliver superior performance and fuel efficiency, the Cummins Stage V diesel engine fully meets the latest emissions regulations. To optimize machine performance, the engine uses high-pressure fuel injectors, a VGT™ turbocharger inter-cooler and electronic engine controls. A 4-cycle water-cooled, turbocharged, Exhaust Gas Recirculation (EGR) and Selective Catalytic Reduction (SCR) with a Diesel Particulate Filter (DPF).

XE300U

Model	Cummins B6.7
No. of cylinders	6
Rated power at 2000 rpm	
(SAE J1995)	173 kW (232 hp) at 2000 rpm
(SAE J1349)	—
(ISO 9249)	149 kW(200 hp)/2000 rpm
Max. torque at 1500 rpm	949 N·m (700 ft·lb)
Idle (low - high)	700 - 1200 rpm
Piston displacement	6.7 L (408 in³)
Bore × stroke	107 mm × 124 mm (4"× 5")
Starter	24 V × 7.8 kW
Batteries - Alternator	2 × 12 V, 150 Ah - 24 V, 70 A
Air filter	Donaldson the latest PSD air filter and pre-filtered dust separator

Weight

	XE300U		
	Shoe width (mm/in.)	Operating weight (kg/lb)	Ground pressure (kPa/psi)
Triple grouser	600/24"	32 500/71,650.2	59.8/8.7
	700/28"	32 900/72,532.1	52/7.5
	800(Std)/31"	33 300/73,413.9	45.1/6.5

Hydraulic system

The XICS (XCMG Intelligent Control System) is the brain of the excavator - minimizing fuel consumption and enabling the efficiency of the hydraulic system to be optimized for all working conditions. To harmonize the operation of the engine and the hydraulics, the XICS is connected to the engine's electronic control unit (ECU) via a data transfer link.

- The hydraulic system enables independent and combined operations – 2-speed travel offers either increased torque or high travel speed
- Cross-sensing pump system and auto-deceleration system improve fuel efficiency.
- 7 work modes, 3 power modes - flow and pressure control of auxiliary hydraulic circuits from the control panel
- Computer-controlled pump flow control

› Pumps flow & system pressure

XE300U	
Main pumps, type:	2 × variable displacement tandem axial piston pumps
Maximum flow at 2000 rpm	2 × 320 L/min (2×84.5 gal/min)
Pilot pump, type:	Gear pump
Maximum flow at 2000 rpm	23 L/min (6 gal/min)
Relief valve settings:	
Pressure up	34.3/37 MPa (4,975/5,366 psi)
Travel	32.3 MPa (4,685 psi)
Swing	27.5 MPa (3,989 psi)
Pilot	3.9 MPa (566 psi)

Undercarriage

Extremely robust construction throughout - made of high-quality, durable materials, with all welded structures designed to limit stresses.

- Lifetime lubricated track rollers, idlers and sprockets fitted with floating seals
- Track shoes made of induction-hardened alloy with triple grouser
- Heat-treated connecting pins
- Hydraulic track adjuster with shock-absorbing tension mechanism

› Number of rollers and track shoes per side

XE300U	
Upper rollers (standard shoe)	2
Lower rollers	9
Number of links & shoes per side	48
Link pitch	216
Overall track length	4 930 mm (16'2")

Cab

Optimal climate control is provided by the integrated air-conditioning and heating system. An automatically- controlled fan supplies the pressurized and filtered cab air, which is distributed throughout the cab from multiple vents. The fully adjustable heated air suspension operator's seat includes a seat belt. The operator can adjust the ergonomic seat and joystick console separately according to his preferences.

Note: Declared single-number noise emission values are the sum of measured values and the associated uncertainty, and they represent the upper boundaries of the range of values which is likely to occur in measurements.

› Noise emission

XE300U	
A-weighted emission sound pressure level at the operator's position, LpAd (ISO 6396:2008)	73 dB(A)
A-weighted sound power level, LwAd (2000/14/EC)	Declared : 104 dB(A) Measured : 103 dB(A)



Technical Specifications

Component weights

Item	Unit	XE300U	Remarks
Upper structure without front	kg/lb	13 823 (30,474.5)	With counterweight
Lower structure assembly	kg/lb	11 186 (24,660.9)	800 mm/31" in shoe
Front assembly	kg/lb	3 922 (8,646.5)	Without cylinder
Counterweight	kg/lb	6 000 (13,227.7)	SLR counterweight:
Boom	mm/kg (ft/lb)	6 150/2 180 (20'2"/4,806.1)	Including bushing
Arm	mm/kg (ft/lb)	3 200/1 184 (10'6"/2,610.3)	Including bushing

Drive

An independent, high-torque axial piston motor through a planetary reduction gearbox drives each track. Two levers with foot pedals guarantee smooth travel with counter-rotation on demand. The track frame protects the travel motors with hydraulically released multi-disc brakes and planetary gears.

> Speed & traction

XE300U

Travel speed (low - high)	3.2-5.3 km/h (2.0-3.3 mph)
Maximum traction	26.3 ton (57,981.6 lb)
Maximum gradeability	35° / 70%

Buckets

Bucket type	Capacity (m³/yd³) SAE	Width (mm/in.)		Weight (kg/lb)	Boom 6.15 m/20'2" Arm 3.2 m/10'6" Shoe 800 mm/31"
		With side cutters	W/o side cutters		
GP	1.8/2.4yd³	1 602/5'3"	1 602/5'3"	1 452/4'9"	C
HD(std)	1.6/2.1yd³	1 450/4'9"	1 450/4'9"	1 441/4'9"	B
SD	1.4/1.8yd³	1 300/4'3"	1 300/4'3"	1 369/4'6"	A

Hydraulic cylinders

High-strength steel piston rods and cylinder bodies. Shock-absorbing (cushion) mechanism fitted in all cylinders for shock-free operation and extended piston life.

Cylinders	Quantity	Bore × rod diameter × stroke (mm/in.)
Boom	2	140×100×1 407 (5.5×3.9×55.4)
Arm	1	160×110×1 646 (6.3×4.3×64.8)
Bucket	1	140×100×1 156 (5.5×3.9×45.5)

Swing mechanism

The swing mechanism uses an axial piston motor, driving a 2-stage planetary reduction gear for maximum torque bathed in oil.

- Swing bearing: single-row, shear type ball bearing with induction hardened internal gear
- Internal gear and pinion immersed in lubricant

> Swing speed & torque

XE300U

Maximum swing speed	9.7 rpm
Maximum swing torque	103.2 kN·m (76,096 lbf·ft)

> Fluid capacities

XE300U

Fuel tank	490 L (129.4 gal)
Cooling system (radiator)	26 L (6.9 gal)
Urea (DEF) tank	48 L (12.7 gal)
Hydraulic oil tank	330 L (87.2 gal)
Engine oil	30 L (7.9 gal)
Swing drive	10.5 L (2.8 gal)
Travel device	2 ×9.5 L (2 ×2.5 gal)

GP: General purpose; HD: Heavy duty; SD: Severe duty;

A: Suitable for materials with a density less than or equal to 2100 kg/m³(131 lb/ft³)

B: Suitable for materials with a density less than or equal to 1800 kg/m³(112 lb/ft³)

C: Suitable for materials with a density less than or equal to 1500 kg/m³(93 lb/ft³)













Based on ISO 10567 and SAE J296, arm length without quick-coupler. For reference only.



Lifting Capacities

XE300U

Model: Rated lift capacity (kg/lb) of XE300U standard track width: 3 390mm (11'1")- W/o bucket

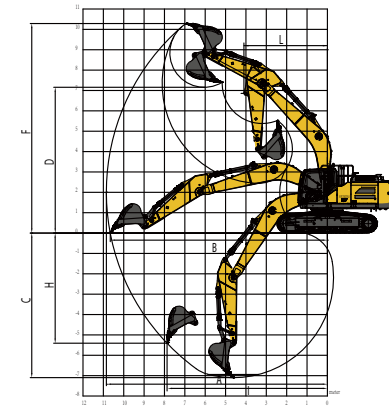
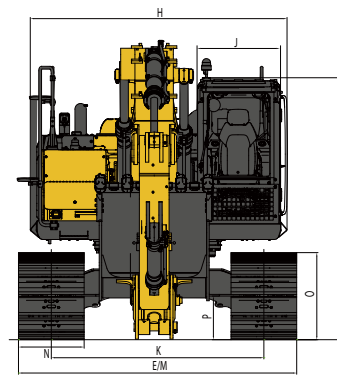
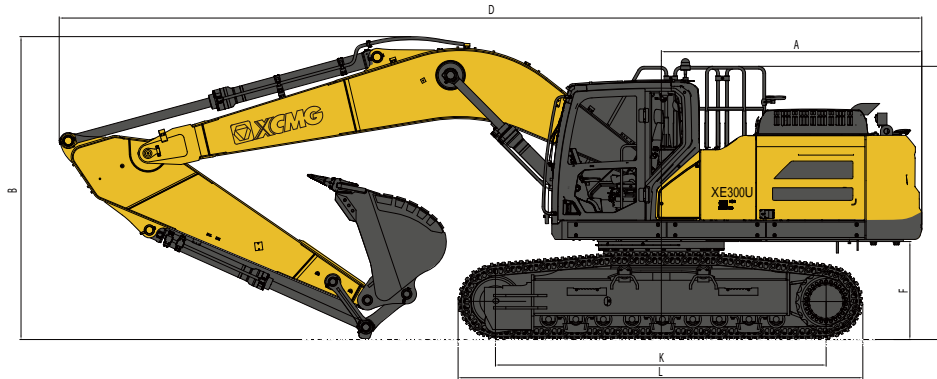
Lpr (m/ft)		A		3.0 m (9.8 ft.)		4.5 m (14.8 ft.)		6.0 m (19.7 ft.)		7.5 m (24.6 ft.)		9.0 m (27.5 ft.)		Max. reach			
Lph(m/ft)		B		 		 		 		 		 		 			
Boom 6150 mm/20'4" Arm 3200 mm/10'2" Shoe 800 mm/24" Counterweight 6 t/13,228 lb		9.3/30.5												*6 350 13,999	*6 350 13,999		
		7.5/24.6												*8 298 18,294	7 458 16,442	*6 272 13,827	*6 272 13,827
		6/19.7												*8 420 18,563	7 388 16,288	*5 992 13,210	5 766 12,712
		4.5/14.8										5 411 11,929		*5 830 12,853	5 176 11,411		
		3/9.8										*7 150 15,763		5 286 11,654	*5 995 13,217	4 870 10,737	
		1.5/4.9										*7 425 16,369		5 151 11,356	*6 380 14,065	4 772 10,520	
		Ground										*7 895 17,405		5 060 11,155	*7 018 15,472	4 872 10,741	
		-1.5/-4.9												7 920 17,461		5 217 11,502	
		-3/-9.8												8 827 19,460		5 960 13,140	
		-4.5/-15												*9 456 20,847		7 598 16,751	

: Over front
 : Over side or 360°

1. The lifting capacity is based on the ISO10567 standard.
2. * = The maximum lifting capacity is limited by the hydraulic capacity of the machine.
3. The lifting capacity does not exceed 87% of the hydraulic capacity or 75% of the tipping load with the machine on level and firm ground.
4. The operator should be familiar with the machines operating- and maintenance manual. Local regulations concerning the safe operation of machinery must be followed at all times.
5. The lift diagrams only covers machines that are originally built by XCMG: without lifting chains and any other lifting equipment.
6. When the excavator is used to lift or handle materials, it must comply with local regulations.



Technical Specifications



Dimensions

	XE300U	mm/ft.in
	Boom length - mm/ft.in	6 150/20'2"
	Arm length - mm/ft.in	3 200/10'6"
	Bucket capacity - m³/yd³	1.6/2.1
A	Tail swing radius	3 170/10'5"
B	Shipping height (boom)	3 691/12'1"
C	Shipping height (guardrail)	3 329/10'11"
D	Shipping length	10 510/34'6"
E	Shipping width	3 390/11'1"
F	Counterweight clearance	1 194/3'11"
G	Height over cab	3 198/10'6"
H	Upper structure width	3 192/10'6"
J	Cab width	1 015/3'4"
K	Overall width of chassis	4 030/13'3"
L	Track length	4 932/16'2"
M	Undercarriage width	3 390/11'1"
N	Shoe width std.	800/31"
O	Track height	1 061/3'6"
P	Ground clearance	532/21"

Working range

	XE300U	mm/ft.in
	Boom length - mm/ft.in	6 150/20'2"
	Arm length - mm/ft.in	3 200/10'6"
	Bucket capacity - m³/yd³	1.6/2.1
A	Max. digging reach	10 852/35'7"
B	Max. digging reach (ground)	10 661/34'12"
C	Max. digging depth	7 097/23'3"
D	Max. loading height	7 157/23'6"
E	Loading height	2 437/7'12"
F	Max. digging height	10 287/33'9"
G	Max. bucket pin height	8 850/29'
H	Max. vertical wall depth	5 407/17'9"
I	Max. radius vertical	7 855/25'9"
J	Max. digging depth (8° level)	6 940/22'9"
K	Min. radius 8° line	3 335/10'11"
L	Min. swing radius	4 099/13'5"

Digging forces (ISO)

	XE300U	mm/ft.in
	Boom length - mm/ft.in	6 150/20'2"
	Arm length - mm/ft.in	3 200/10'6"
	Bucket capacity - m³/yd³	1.6/2.1

Bucket
(Normal/Press. Up) - kN/lbf 206/222(46,311 lbf/49,908 lbf)

Arm
(Normal/Press. Up) - kN/lbf 155/167(34,845 lbf/37,543 lbf)

>Standard and Optional Equipment

Engine	
Urea tank AD Blue	●
Auto-preheating	●
Fuel-water separator with water level instruction sensor	●
Radial seal air cleaner	●
Air prefilter	●
The cooling assembly in 50°C (122°F) ambient temperature	●
Dust screen for radiator	●
Fuel oil gauge	●
Fuel-water quickly release device	●
Coolant heater (Diesel)	○
Fuel-water separator with heater(24 V) (Optional when temperature is below 25°C(77°F))	○
Electronically controlled silicone oil clutch	●
Fuel filling pump	○
Air pressure difference indicator	●
Auto idle	●

Cab & interior	
Pressurized cab	●
Air suspension seat with heater	●
Control box on left and right	●
Rain visor (Not mounted when front upper guard exists)	●
Front windshield divided by 70/30 ratio	●
Double laminated windshield glass and other tempered glass	●
Sliding upper door window	●
Air conditioner with defroster [Automatic][Pressurized]	●
Color LCD display with warning,filter / liquid refill and working hours information	●
Travel control pedal with detachable manual control lever	●
Double stereo speaker	●
Cup holder	●
Coat hook	●
Washable floor mat	●
Safety belt	●
High and low travel speed switch	●
One-key boost	●
Reserved switch for working attachment	●
Sun visor	●
Skylight	●
Multi-gear windshield wiper with intermittent feature	●
File packet	●
Emergency exit on rear window	●
Hammer for emergency escape	●

Conterweight	
6 t (13,227.7 lb)counterweight	●

Lubrication system	
Electric auto lubrication system	●
Arm centralized lubrication system	●

Hydraulic system	
Auxiliary hydraulic valve	●
Single or dual way pipeline	●
Quick coupler piping	●
Rotary attachment piping	●
Hydraulic oil ISO VG 46	●
Hydraulic oil ISO VG 32	○
Hydraulic oil ISO VG 68	○
Electric proportional joysticks on the left and right	●
Spare valve plate	●
Pressure monitor gauge	●
Adjustable flow instrument of AUX1 and AUX2 pipeline	●
Adjustable pressure instrument of AUX1 pipeline	●
Adjustable pressure instrument of AUX2 pipeline	○

Boom, arm and bucket	
Boom-6.15 m(20'2")	●
Arm-3.2 m(10'6")	●
Rock bucket-1.4 m³ (1.83 yd³)/1 324 mm(4'4")	○
Arm-2.7 m(8'10")	○
Reinforced bucket-1.6 m³ (2.1 yd³)/1 444 mm(4'9")	●
Rock bucket-1.8 m³ (2.35 yd³)/1 602.5 mm(5'3")	○
Ditching bucket(31.5")	○
Thumb	○
Breaking Hammer	○
Scarifier	○
Hydraulic shear	○
Straight breaking hammer	○
Orange peel grab	○
Timber grab	○
Grapple	○
Vehicle dismantling shear	○
Scrap shear	○
Crushing pliers	○
Hydraulic vibratory compactor	○

Undercarriage	
Triple track guards for both sides	●
2×9 bottom rollers	●
2×2 carrier rollers	●
Tow ring on the bottom frame	●
2×48joints track with triple grouser shoes, 600 mm(24")	○
Guard kits: Bottom sealing plate of undercarriage, sealing plate of travel motor	●
Track with triple grouser shoes, 700 mm(28")	○
Track with triple grouser shoes, 800 mm(31")	●

Safety and guards	
Anti collision beam	○
Lock for the cab door and each cabin	●
Warning horn	●
The quick coupler button with warning	●
Isolation plate between engine and pump chamber	●
Battery disconnect switch	●
Overheating warning	●
Safety handrail and pedals	●
Anti-skid plate/anti-skid paste	●
Hydraulic safety locking lever	●
Left and right rearview mirrors	●
Counterweight rearview mirror	○
Anti-burst valve on the boom	●
Anti-burst valve on the arm	○
Roll over protective structure	●
Operator protective guard	○
Top protective net	○
Protective net on upper front windshield(Bar type)	○
Protective net on lower front windshield(Bar type)	○
Protective net on lower front windshield(Grid type)	○

Electrical system	
Battery (2×850 CCA)	●
70 A alternator	●
7.8 kW starter motor	●
12 V Electric power interface	●
USB interface(5 V)	●
Emergency stop switch	●
Rightview camera	●
Rearview camera	●
AM-FM radio with digital display	●
DAB bluetooth digital radio	○
Travel buzzer with switch	●
Rotating beacon	●
Two front working light on the cab(LED)	●
One rear working light on the cab(LED)	●
Two working lights on the boom(LED)	●
Interior light	●

Standard: ●
Optional: ○

· Some of these standard or optional equipment may not be available for certain markets.

· Pictures may include attachments and optional equipment that are not available in your area. · Materials and specifications are subjected to change without advance notice.

· Please contact your local XCMG dealer for more information on availability or to customise your machine to suit your applications requirements.

Optimum Services , XCMG Guaranteed



XCMG approved attachments



Genuine parts



Financial solutions



Maintenance contract



Telematics



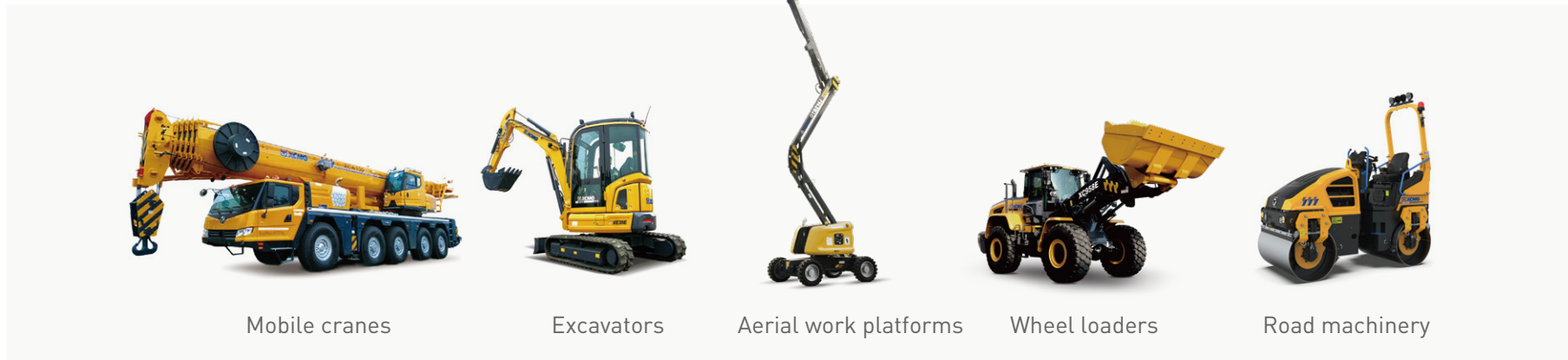
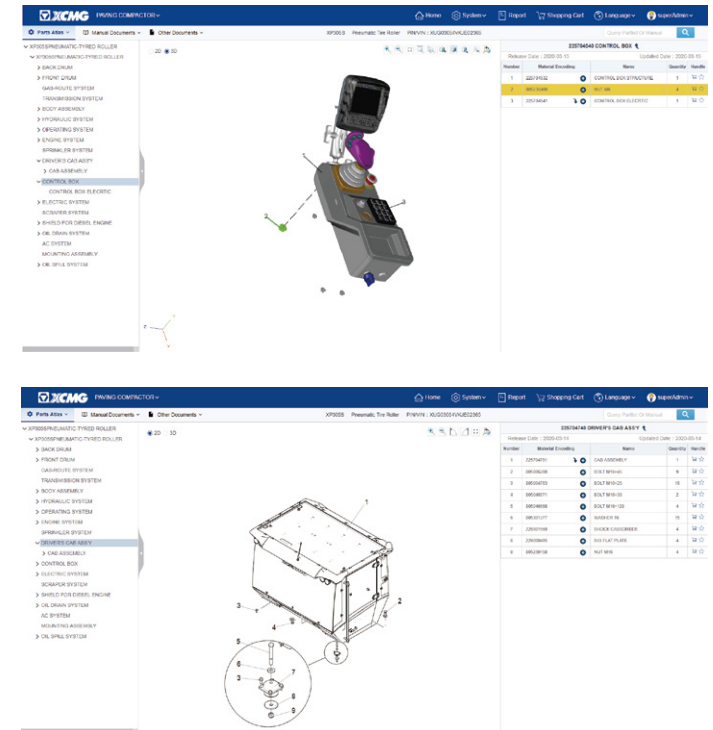
Professional Integrated Complete Solutions

XCMG group has built a strong reputation based on the quality, reliability and durability of its construction machinery. What's more, XCMG has gradually established a service network to constantly provide its local integrated and highly efficient complete solutions for all customers.

Full Range of Services Ready for you

In order to respond to your needs as fast as possible, XCMG experts are on their way to your job site from one of our facilities near you. Full range of services are available in order to reduce your total cost of ownership and increase your revenue.

XCMG Global Spare parts System



Mobile cranes

Excavators

Aerial work platforms

Wheel loaders

Road machinery





XCMG

XCMG FOR YOUR SUCCESS

