

Hydraulic Excavators XE225U



XCMG FOR YOUR SUCCESS

Rated Power: 129 kW (173 hp)
Operating Weight: 23 500 kg (51,809 lb)
Standard Bucket Capacity: 1.2 m³ (1.57 yd³)

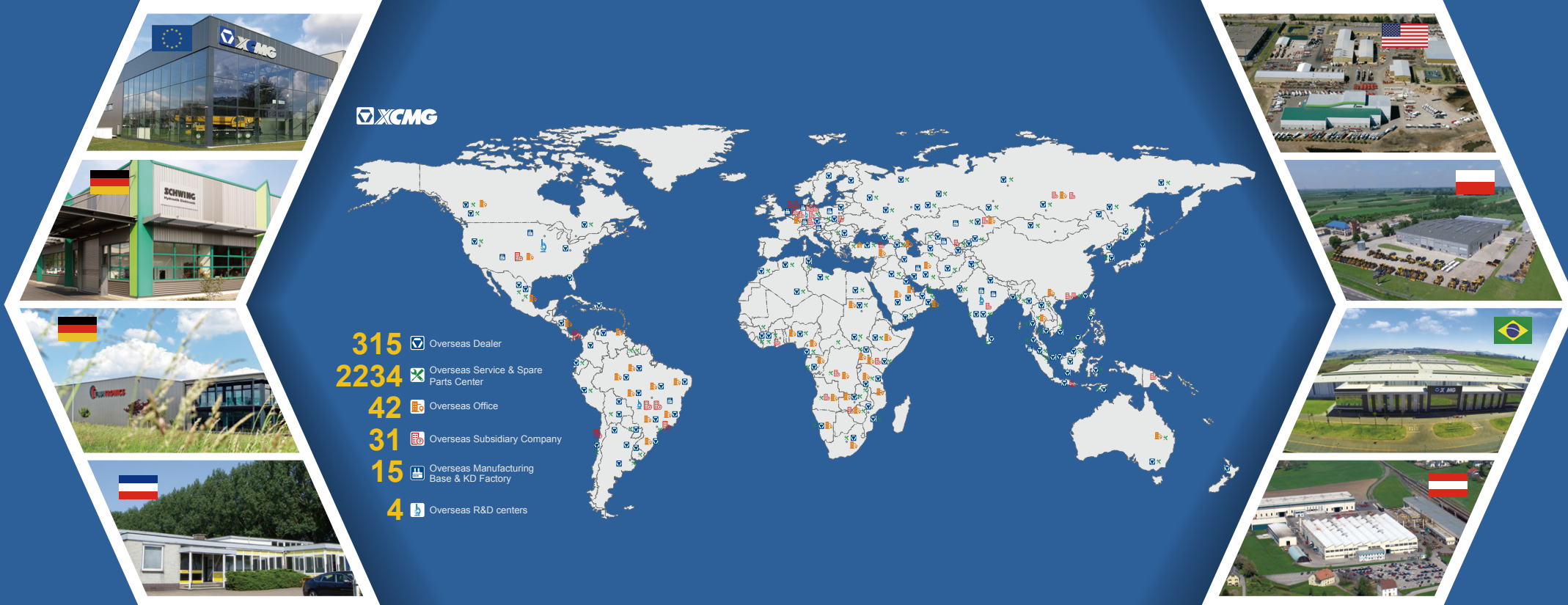
XCMG NORTH AMERICA CORPORATION
Add: 5145 Schirlls St. Las Vegas, Nevada 89118
Tel: +1 725 605 2777
Fax: +1 725 605 2888
E-Mail: bin@xcmg.com

XUZHOU CONSTRUCTION MACHINERY GROUP IMP. & EXP. CO., LTD
Add: NO.1, Tuolanshan Road, Xuzhou Economic Developing Zone,
Jiangsu, China 221004
Tel: +(86) 516 8773 9285
E-Mail: bin@xcmg.com



www.xcmg.com





INTRODUCTION OF XCMG

Founded in 1943, XCMG is the largest enterprise in the Chinese construction machinery industry. We offer the most diverse product line and the highest technological standards. We provide a comprehensive set of construction solutions, and we are the most internationally competitive firm in the industry. On KHL Yellow Table, we rank No. 1 in China and No.3 globally.

Across our offices in China, the US, Germany, India, and Brazil, XCMG has established a global collaborative research platform including national-level R&D facilities focused on advanced smart manufacturing technology. Our R&D team consists of top talents from around the globe. They are researching cutting-edge technologies such as new energy, unmanned driving and high-end parts. Our work has earned us numerous international patents and awards.

XCMG has the most comprehensive product line, meaning we can offer fully comprehensive solutions in 9 areas: hoisting, earthwork, road building & maintenance, mining, concrete & paving, tunnel-building & underground construction, high-altitude firefighting equipment & special-purpose vehicles, railway & bridge construction, sanitation engineering. All these solutions can be customized to suit our customers' needs.

At XCMG, our five-continent sales network gives our products worldwide visibility. We have 300 overseas distributors, over 10 overseas manufacturing bases and KD (Knockdown) factories, and products in more than 180 countries and regions. We supply our global customers with pre-sales, mid-sales and after-sales service, and a convenient, efficient one-stop financing and leasing service. XCMG's total annual exports and overseas income consistently come top of the industry in China.

We care deeply for the welfare of the people. We support numerous charitable causes, and are quick to the scene during disaster relief efforts.

XCMG is all set to become an eternal brand with our feet on the ground and eyes on the horizon. XCMG's ambition leads us forever forwards. XCMG is scaling its Everest, and is determined to reach the top.

The newly upgraded XE225U builds on its reputation as one of the most sold and appreciated excavators of XCMG. All features have been designed on the basis of examining customer demands including sufficient power and hydraulic flow, versatility, low fuel consumption and emissions.

If you are looking for a tough machine from a durable brand you can trust to get your work done with efficiency, look no further than our XE225U. Its versatile design and innovative features delivery the performance you expect to do various difficult jobs.



Built to last

The robust design featuring state-of-the-art Cummins Tier 4 Final compliant engine, Kawasaki-KPM pump, main control valve, swing motor and upgraded hydraulic system, coupled with reinforced boom, arm, structural parts, and enlarged cylinders makes the XE225U a reliable machine that will live up to your every expectation when operating in rough terrains.

Made to do more

Multiple sizes of buckets including 0.9/1.2 m³ Earthwork Bucket, 0.9/1.0/1.2 m³ Strengthened Bucket, and 0.9/1.0 m³ Rock Bucket give you more options in different jobsites. Further with a wide range of attachments, the machine is extremely versatile for productive, efficient operations.

Safety solutions

Every XCMG excavator is designed with safety as a priority and the machine features a ROPS and OPG certified cab, standard rear view and optional right view cameras, anti-slip steps, guard rails, and LED working lights. Both the operator and people around the machine are well protected with these solutions.

Optional features give you more

The XE225U comes with every feature that the operator would expect in the industry. Additionally, it can always surprise you with multiple optional equipment.

Easy-to-use attachments

Programmable auxiliary lines AUX1 (single and dual way) and AUX2 are provided to support your hydraulic attachments like, grabs, shear, hammer and many more.

Operator comfort

To ensure operator comfort, it offers a spacious cab with low noise and reduced vibration by silicon-filled viscous mount and excellent all-round visibility. Fully adjustable heated air suspension seat and air conditioning with climate control as standard.

Precise control

With 8 working modes and 3 power modes and proportional joysticks, the operator can finish demanding tasks with confidence and efficiency.

Powerful engine

The reliable Cummins B6.7 T4F engine delivers exceptional power while reducing emissions and fuel consumption by adopting high pressure common-rail electronic injection system among other advanced technologies.

Easy maintenance

The grouped filters and centralized lubrication points, easily accessed from the ground level, make daily maintenance efficient and safer at your jobsites.

User friendly

The meticulously designed 8" LED display is optimized for efficient control, resulting in excellent productivity plus service reminding feature. Besides, all other Human Machine Interface such as joysticks, panels, bottoms are ergonomically engineered.

Robust undercarriage

The robust sprockets, idlers, carrier and bottom rollers, along with X-shape frame are built to withstand tough terrains and operations, to improve durability and increase uptime.



Excellent Performance and Fuel Efficiency

Power without compromise

The XE225U makes handling of your tasks efficient and comfortable

- The optimized Kawasaki-KPM hydraulic system makes sure all engine power is utilized in the best possible way by delivering accurate maximum pumping in a smooth way.
- The digging, lifting and traction force are greatly increased by the precisely matched engine and hydraulic systems.
- The cost of ownership is reduced due to improved fuel efficiency.

Power match technology

The XE225U is equipped with a Cummins B6.7 engine. Famous for its excellent fuel efficiency, reliability, and long service intervals, it combines exceptional power output and high torque at low revs. Selective Catalytic Reduction (SCR) technology - combined with a Diesel Particulate Filter (DPF) - ensures compliance with Tier 4 Final regulations. If the engine is the heart of the excavator, the XICS (XCMG Intelligent Control System) is its brain – providing a perfectly synchronized communication link between the engine's ECU (Electronic Control Unit) and the hydraulic system. The CANBUS (Controller Area Network) system enables a constant flow of information between engine and hydraulic system, so that power is delivered exactly as needed.

Fuel efficiency technology

- Choosing between 3 power modes and 8 attachment modes guarantees optimum performance under all conditions.
- Electronic control of fuel consumption.
- The auto idle feature reduces the engine speed when the controls are inactive for a preset amount of time or when the safety lever is switched off. The engine will immediately return to its original selected speed when the operator touches any control panel.
- For optimum cooling, the fan speed is controlled by a viscous clutch that results in lower fan noise with better fuel efficiency.



— Easy maintenance for hydraulics:

- 2000/4000 hours for hydraulic oil replacement (depending on the hydraulic oil type)
- Replace the hydraulic oil return filter every 500 hours
- Replace the hydraulic oil suction filter element every 2000 hours

— Less engine service:

- 500 hours engine diesel filter replacement
- 500 hours engine oil and filter replacement
- The long service intervals guarantee minimized downtime.

First Choice for Operator Comfort

The XE225U cab is designed to support demanding productivity with a spacious comfortable operator environment. The pressurized cab is ISO-certified for operator's safety and offers a comfortable fully adjustable air-suspension heated seat with several storage compartments and a clear all-round view of your jobsites. The reduced noise and vibration with automatic air-conditioning/climate-control will make your workday more relaxing and comfortable.



Sufficient Power

An industry-leading Cummins engine that saves on fuel and meets the Stage V/Tier 4 F emission regulations powers the XCMG XE225U.

Advanced control technology

Ergonomic, advanced, and simple-to-operate - Kawasaki's proportional joysticks plus their adjustable rollers and buttons deliver ultra-precise and smooth control over all movements.

Automatic climate control AC

A powerful AC with five working modes pumps sufficient airflow through multi-vents system to keep the ambient temperature as desired even in harsh working conditions. A recirculated air function is also available to maintain refreshing air.

Spacious storage

The new cab has 5 storage compartments - including a hot/cold box, a storage box, document bag, sundry box, and cup holder.

Standard Bluetooth radio and optional DAB radio

Advanced infotainment system reduces operator's fatigue during routine operations.

Cab suspension

Even at the roughest jobsites where you are working, the cab's upgraded silicone-filled viscous mount and suspension seat dampens and gets rid of the unwanted feedback from your operations.

Quick coupler control

A standard quick coupler hydraulic system with pipelines guarantee that you can easily switch attachments from the operator's seat to save time and efforts.



Simple and Easy Control

► Machine interfaces

All machine interfaces – including joysticks, keypad, panel and larger LCD monitor – are ergonomically designed for optimum control and efficiency, resulting in increased productivity and workplace wellbeing. The switches have been simplified and climate control is now integrated into the keypad for easy adjustments.

- The new multi-function 8" TFT LCD monitor displays a comprehensive range of useful technical information, allowing you to check the machine's status and settings at a glance.
- Highly sensitive and low-effort joysticks and clear convenient controls enable you to work smooth and safely with minimum effort for increased comfort and efficiency.
- The new adjustable proportional auxiliary functions support precise and smooth control of your attachments.

Intelligent monitor

The upgraded 8" TFT monitor features a day and night display with full user access to the machine settings and maintenance data. Any abnormality is clearly displayed on the screen, allowing you to work safely and confident with an accurate overview of all conditions.



- 1 Spacious operator's space
- 2 Large travel pedal
- 3 Heated air suspension seat
- 4 Power outlet
- 5 Throttle dial
- 6 All around AC and heating
- 7 (Bluetooth) AM/FM radio
- 8 Proportional joysticks
- 9 High quality speaker
- 10 Hammer control pedal
- 11 Engine stop switch in the cab
- 12 Color LCD monitor
- 13 Storage compartment
- 14 Safety lever
- 15 Cup holder

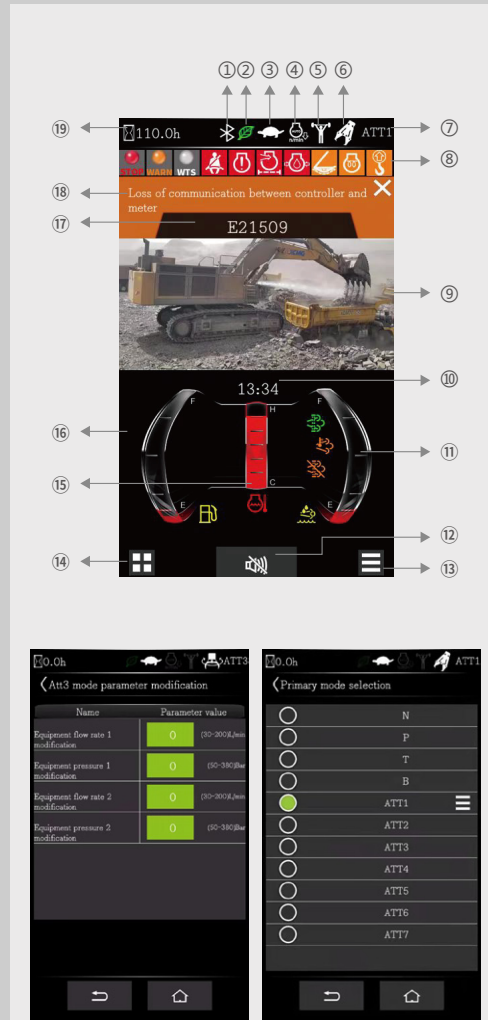
Dynamic power management

- Activating the power boost control system increases the digging force by 8.8%
- Auto-idling starts 4 seconds after all controls are returned to the neutral position.

8 Attachment modes & 3 Power modes

Deliver the needed power according to your specific applications while minimizing fuel consumption. One click mode for quick selection and more convenient operation. Visual adjustment of pressure and flow parameters for more intelligent control.

1. Bluetooth
2. Energy saving icon
3. Travel speed (H/L)
4. Automatic idle
5. Power boost
6. Work mode
7. Mode and gear
8. Notification icon
9. Camera
10. Time and date
11. Urea level
12. Mute button
13. Main interface set
14. Menu
15. Coolant temperature
16. Fuel level
17. Fault code area
18. Fault description
19. Hour meter



► Designed for long-term robustness and safety

XCMG has developed one of the most rigorous strength and reliability testing procedures. The XCMG U-series features durability under the most extreme conditions and is therefore one of the most popular brands in its home market. We continually manufacture the most durable machines in order to reduce the cost of ownership. The robust upper frame, undercarriage structure, and front attachments show their real value in tough working conditions and guarantee higher productivity.

Reinforced durability of the X-chassis

The X-shaped undercarriage has a higher durability than demanded on the jobsite, as proven through numerous tests including road tests and virtual simulation.

Undercarriage durability with easy maintenance

- The chain is composed of sealed, self-lubricating links for long-term performance
- Long life track tensioners and the idlers
- Heavy-duty wear resistant cast sprockets
- Durable lubricated track rollers

Strengthened boom and arm

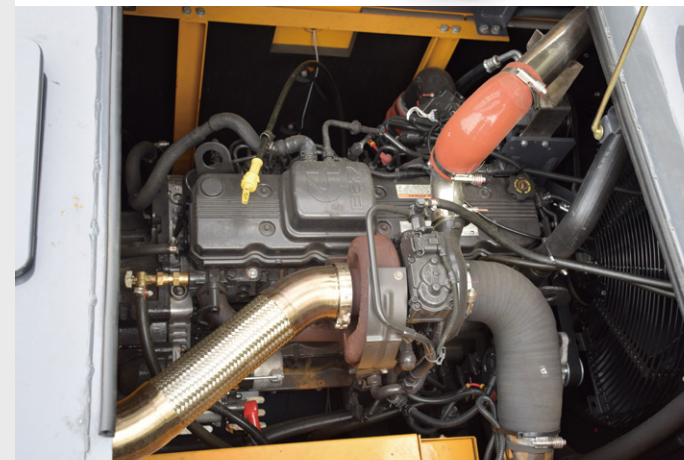
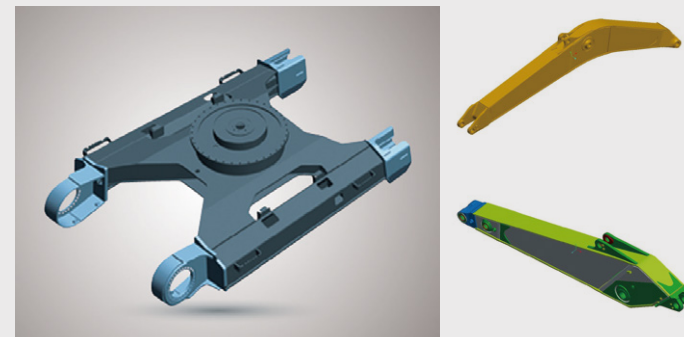
FEA has been used to calculate the best load distribution throughout the machine structure. For better protection of the base of the arm, reinforced bars have been added. The arm structure has been strengthened for the roughest conditions.

Hi-grade (high-pressure) hoses

The U-series uses a new type of high-pressure hoses with improved heat and pressure resistance to increase the durability of the machine.

Reinforced pin, bush, and polymer shim

The new series improved the lubricity of the connecting parts between the machine and attachments. Gaps with attachments are minimized by wear-resistant long-life pins, bushes, and polymer shims, supporting the highest performance with invariable durability.



Maintenance

► Excellent serviceability

Our machines are designed for simple routine maintenance, while skilled XCMG technicians are available to provide extra support if needed. To get the most out of your machine, choose the package you need from a broad range of service agreements. Uptime, productivity and residual value are all maximized, making the XE225U an economical and rewarding choice.

Simple and easy maintenance

- A large guard rails are installed along with anti-slip steps and plates, for safer and easier access to the whole upper structure
- The cab's air-conditioning filter is lockable and placed on the cab's side for easy access
- A battery cut-off switch to easily disconnect the battery for jobsite-required safety measures
- Shut-off valves on the pre-filter piping line and the fuel tank drain piping make servicing easier and prevents pollution from leakage
- The engine parts can be reached easily via the top and side panels
- For extra accessibility and servicing convenience, all filters (engine oil filter, fuel pre-filter, fuel filter and hydraulic pilot filter) are located in the pump compartment.

Pre-start monitoring system

The XE225U has a pre-start monitoring system that shows you coolant temperature, hydraulic oil temperature, engine oil pressure, fuel levels, and the AdBlue® level. It will also indicate fluid and filter intervals to keep the machine in top performing condition.

Proactive maintenance solutions

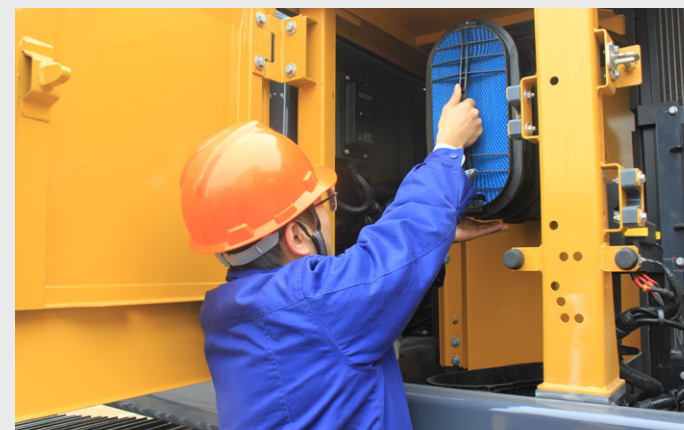
- Extended warranty: extended warranty covering parts, travel, and labor
- Routine maintenance: your dealer will support you with routine service at regular intervals
- Genuine parts: manufactured and tested to ensure long lifetime of your machine.

SCR tank and easy diesel filling

The ECU (Engine Control Unit) monitors with sensors of the AdBlue® system and warns the operator for potential system malfunctions.

Centralized lubrication greasing points

To make maintenance easier.







Technical Specifications

Engine

Designed to deliver superior performance and fuel efficiency, the Cummins Stage V diesel engine fully meets the emissions regulations. To optimize machine performance, the engine uses high-pressure fuel injectors, an air-to-air inter-cooler, and electronic engine controls. 4-cycle water-cooled, turbocharged, Exhaust Gas Recirculation (EGR) and Selective Catalytic Reduction (SCR) with a Diesel Particulate Filter (DPF).

XE225U

Model	Cummins B6.7
Engine type	Water-cooled, 4 strokes, direct injection, turbo-charged with air-air intercooler
No. of cylinders	6
Rated power at 2100 rpm	
(SAE J1995)	129 kW (173 hp)
(SAE J1349)	114 kW (153 hp)
(ISO 9249)	114 kW (153 hp)
Max. torque at 1500 rpm	881 N·m (650 ft·lb)
Idle (low - high)	900 - 1300 rpm
Piston displacement	6.7 L (408.9 in³)
Bore × stroke	107 mm × 124 mm (4" × 5")
Starter	24 V × 7.8 kW
Batteries - Alternator	2 × 12 V, 150 Ah - 24 V, 70 A
Air filter	Donaldson's the latest PSD air filter and pre-filtered dust separator

Weight

XE225U

Shoe width (mm/in.)	Operating weight (kg/lb)	Ground pressure (kPa/psi)
600/24"	23 300/51,368	48.5/7.0
700/28"	23 400/51,588	41.7/6.1
800 (Std)/31"	23 500/51,809	36.7/5.3

Hydraulic system

The XICS (XCMG Intelligent Control System) is the brain of the excavator - minimizing fuel consumption and enabling the efficiency of the hydraulic system to be optimized for all working conditions. To harmonize the operation of the engine and the hydraulics, the XICS is connected to the engine's electronic control unit (ECU) via a data transfer link.

- The hydraulic system enables independent and combined operations – 2-speed travel offers either increased torque or high travel speed
- A cross-sensing pump system and an auto-deceleration system improve fuel efficiency.
- 8 attachment modes, 3 power modes - flow and pressure control of auxiliary hydraulic circuits from control panel
- Computer-controlled pump flow control

> Pumps flow & system pressure

XE225U

Main pumps, type:	2 × Variable pump
Maximum flow	2 × 220 L/min (2×58.1 gal/min)
Pilot pump, type:	Gear pump
Maximum flow	17 L/min (4.5 gal/min)
Relief valve settings:	
Pressure up	34.3/37 MPa (4,975/5,366 psi)
Travel	32.3 MPa (4,685 psi)
Swing	27.5 MPa (3,989 psi)
Pilot	3.9 MPa (566 psi)

Undercarriage

Extremely robust construction throughout - made of high-quality, durable materials, with all welded structures designed to limit stresses.

- Lifetime lubricated track rollers, idlers and sprockets fitted with floating seals
- Track shoes made of induction-hardened alloy with triple grouser
- Heat-treated connecting pins
- Hydraulic track adjuster with shock-absorbing tension mechanism

> Number of rollers and track shoes per side

XE225U

Upper rollers (standard shoe)	2
Lower rollers	9
Number of links & shoes per side	49
Link pitch	190
Overall track length	4 455 (14'7")

Cab

Optimal climate control is provided by the integrated air-conditioning and heating system. An automatically- controlled fan supplies the pressurized and filtered cab air, which is distributed throughout the cab from multiple vents. The fully adjustable heated air suspension operator's seat includes a seat belt. The operator can adjust the ergonomic seat and joystick console separately according to his preferences.

> Noise emission

XE225U

Noise level LpA (ISO 6396)	71 dB(A)
Noise level LwA (ISO 6395)	103 dB(A)



Technical Specifications

Component weights

Item	Unit	XE225U	Remarks
Upper structure without front	kg/lb	11 730(25,860)	
Lower structure assembly	kg/lb	7 570(16,689)	800 mm/31" in shoe
Front assembly	kg/lb	3 650(8,047)	
Counterweight	kg/lb	4 200(9,259)	
Boom	mm/kg (ft/lb)	5 680/1 520(18'8"/3,351)	
Arm	mm/kg (ft/lb)	2 400/720(7'10"/1,587) 2 910/780(9'7"/1,720)	

Drive

An independent, high-torque axial piston motor through a planetary reduction gearbox drives each track. Two levers with foot pedals guarantee smooth travel with counter-rotation on demand. The track frame protects the travel motors with hydraulically released multi-disc brakes and planetary gears.

Speed & traction

XE225U

Travel speed (low - high)	3.5- 5.4 km/h (2.2/3.4 mph)
Maximum traction	214 kN (48,109 lbf)
Maximum gradeability	35° / 70%

Hydraulic cylinders

High-strength steel piston rods and cylinder bodies. Shock-absorbing (cushion) mechanism fitted in all cylinders for shock-free operation and extended piston life.

Cylinders	Quantity	Bore × rod diameter × stroke (mm/in.)
Boom	2	120 × 85 × 1 221 (4.7 × 3.4 × 48.1)
Arm	1	140×100×1 475 (5.5×3.9×58.1)
Bucket	1	120×85×1 060 (4.7×3.4×41.7)

Buckets

Bucket type	Capacity(m³/yd³)	Width(mm/in.)		Weight(kg/lb)	Boom 5.68 m/18'8"	
		With side cutters	W/o side cutters		Arm 2.4 m/7'10"	Arm 2.9 m/9'7"
					Shoe 800 mm/31"	Shoe 800 mm/31"
GP	0.5/0.65	-	608/24	656/1,446	A	A
	0.6/0.78	986/39	913/36	651/1,435	A	B
	1.2/1.57	1 519/61	1446/57	894/1,971	B	C
HD	0.93/1.22	1 276/51	1 203/47.4	816/1,799	A	A
	1.05/1.37	1 354/54	1 354/53	959/2,114	A	A
	1.2/1.57	1 325/53	1 280/50	935/2,061	A	B
SD	0.8/1.05	960/38	960/37.8	877/1,933	A	A
	0.9/1.18	1 060/42	1 060/42	925/2,039	A	A
	1/1.31	1 146/46	1 146/45	965/2,127	A	A

Swing mechanism

The swing mechanism uses an axial piston motor, driving a 2-stage planetary reduction gear for maximum torque bathed in oil.

- Swing bearing: single-row, shear-type ball bearing with induction hardened internal gear
- Internal gear and pinion immersed in lubricant

› Swing speed & torque

XE225U

Maximum swing speed	11.8 rpm
Maximum swing torque	69.5 kN·m (51,247 lbf·ft)

› Fluid capacities

XE225U

Fuel tank	400 L (105.7 gal)
Cooling system (radiator)	24 L (6.3 gal)
Urea (DEF) tank	42 L (11.1 gal)
Hydraulic oil tank	150 L (39.6 gal)
Engine oil	24 L (6.3 gal)
Swing drive	5.3 L (1.4 gal)
Travel device	2×4.4 L (2×1.2 gal)

GP: General purpose; HD: Heavy duty; SD: Severe duty;

A: Suitable for materials with a density less than or equal to 2100 kg/m³(131 lb/ft³)

B: Suitable for materials with a density less than or equal to 1800 kg/m³(112 lb/ft³)

C: Suitable for materials with a density less than or equal to 1500 kg/m³(93 lb/ft³)

Based on ISO 10567 and SAE J296, arm length without quick-coupler. For reference only.



Lifting Capacities

XE225U

Standard track width: 3 190 mm (10'6") · W/o bucket (kg/lb)

Lph(m/ft)	Lpr (m/ft)	A		1.5/4.9		3/9.8		4.5/14.8		6 /19.7		7.5 /24.6		Max. reach	
		B													
Boom 5 680 mm/18'8" Arm 2 910 mm/9'7" Shoe 800 mm/31" Counterweight 4.2 t/9,259 lb	7.5/24.6									*5 050 11,133	4 102 9,042			*4 526 9,978	3 956 8,721
	6/19.7									*5 312 11,710	4 100 9,039			*4 120 9,083	3 078 6,787
	4.5/14.8									*5 191 11,444	3 958 8,724	3 934 8,673	2 910 6,415	3 629 8,000	2 657 5,857
	3/9.8							*6 862 15,127	5 208 11,480	*5 007 11,038	3 742 8,249	3 862 8,514	2 825 6,229	3 386 7,464	2 442 5,385
	1.5/4.9							6 553 14,446	4 847 10,685	4 852 10,696	3 562 7,851	3 785 8,344	2 736 6,033	3 294 7,262	2 351 5,183
	Ground			*9 781 21,562	7 213 15,902	6 411 14,133	4 680 10,318	4 742 10,454	3 433 7,567	3 717 8,194	2 655 5,855	3 354 7,394	2 386 5,261		
	-1.5/-4.9	*20 889 46,050	*15 991 35,231	*9 108 20,079	*7 292 16,075	6 370 14,043	4 631 10,209	4 698 10,357	3 381 7,453	3 720 8,201	2 659 5,862	3 585 7,903	2 562 5,648		
	-3/-9.8			*9 972 21,983	7 437 16,395	6 455 14,230	4 731 10,432	4 757 10,487	3 450 7,606				4 097 9,032	2 964 6,534	
	-4.5/-15			*10 155 22,387	7 650 16,865	*6 602 14,554	4 904 10,811						*5 304 11,693	3 928 8,659	

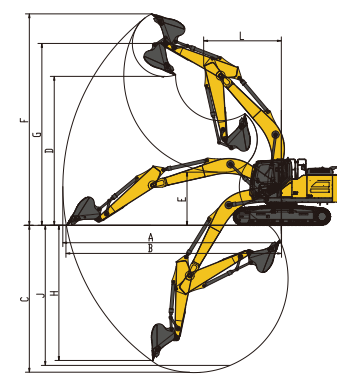
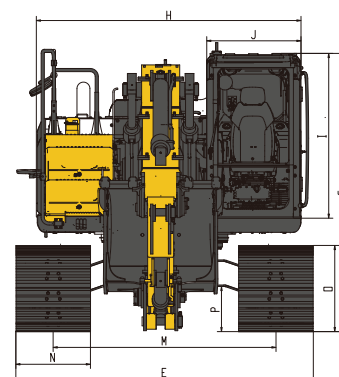
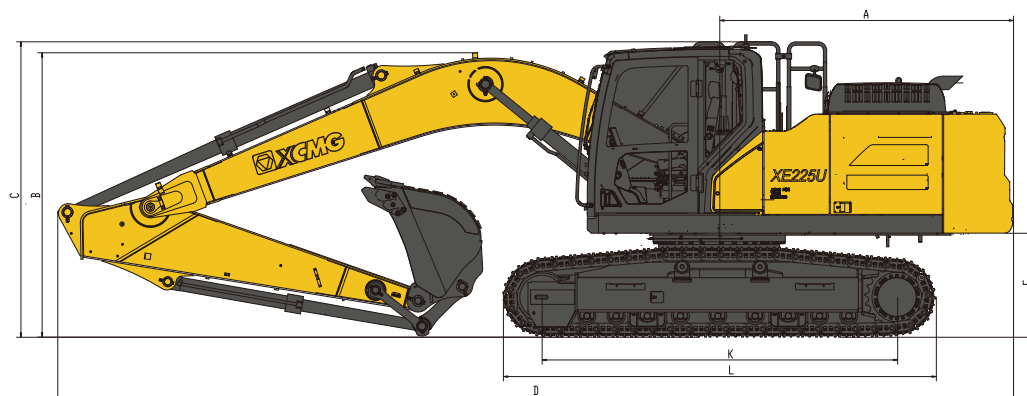
: Over front

: Over side or 360°

1. The lifting capacity is based on the ISO10567 standard.
2. * = The maximum lifting capacity is limited by the hydraulic capacity of the machine.
3. The lifting capacity does not exceed 87% of the hydraulic capacity or 75% of the tipping load with the machine on level and firm ground.
4. The operator should be familiar with the machines operating- and maintenance manual. Local regulations concerning the safe operation of machinery must be followed at all times.
5. The lift diagrams only covers machines that are originally built by XCMG: without lifting chains and any other lifting equipment.
6. When the excavator is used to lift or handle materials, it must comply with local regulations.



Technical Specifications



Dimensions

XE225U		mm/ft	mm/ft
Boom length-mm/ft		5 680/18'8"	5 680/18'8"
Arm length-mm/ft		2 400/7'10"	2 910/9'7"
Bucket capacity-m ³ /yd ³		1.2/1.57	1.2/1.57
A	Tail swing radius	3 015/9'11"	3 015/9'11"
B	Shipping height (boom)	3 150/10'3"	3 000/9'10"
C	Shipping height (guardrail)	3 030/9'11"	3 030/9'11"
D	Shipping length	9 640/31'8"	9 810/32'2"
E	Shipping width	3 190/10'6"	3 190/10'6"
F	Counterweight clearance	1 067/3'6"	1 067/3'6"
G	Height over cab	2 985/9'8"	2 985/9'8"
H	Upper structure width	2 830/9'3"	2 830/9'3"
I	Cab height above house	1 778/5'8"	1 778/5'8"
J	Cab width	1 095/3'7"	1 095/3'7"
K	Tumbler distance	3 650/11'11"	3 650/11'11"
L	Track length	4 445/14'7"	4 445/14'7"
M	Track Gauge	2390/7'8"	2390/7'8"
N	Shoe width std.	800/31"	800/31"
O	Track height	925/36"	925/36"
P	Ground clearance	485/19"	485/19"

Working range

XE225U		mm/ft	mm/ft
Boom length-mm/ft		5 680/18'8"	5 680/18'8"
Arm length-mm/ft		2 400/7'10"	2 910/9'7"
Bucket capacity-m ³ /yd ³		1.2/1.57	1.2/1.57
A	Max. digging reach	9 430/30'11"	9 940/32'7"
B	Max. digging reach (ground)	9 260/30'5"	9 780/32'1"
C	Max. digging depth	6 170/20'3"	6 680/21'11"
D	Max. loading height	6 650/21'10"	6 780/22'3"
E	Min. loading height	2 980/9'9"	2 400/7'10"
F	Max. digging height	9 500/31'2"	9 620/31'7"
G	Max. bucket pin height	8 120/26'8"	8 240/27'
H	Max. vertical wall depth	5 550/18'3"	5 715/18'9"
J	Max. digging depth (8' level)	5 950/19'6"	6 500/21'4"
L	Min. swing radius	3 530/11'7"	3 530/11'7"

Digging forces (ISO)

XE225U		mm/ft	mm/ft
Boom length-mm/ft		5 680/18'8"	5 680/18'8"
Arm length-mm/ft		2 400/7'10"	2 910/9'7"
Bucket capacity-m ³ /yd ³		1.2/1.57	1.2/1.57
Bucket (Normal/Press. Up) - kN/lbf		155/34,845	149/33,497
Arm (Normal/Press. Up) - kN/lbf		121/27,202	111/24,954

>Standard and Optional Equipment

Engine	
Urea tank AD Blue	●
Auto-preheating	●
Fuel-water separator with water level instruction sensor	●
Fuel-water separator with heater	○
Cold-start	○
Radial seal air cleaner	●
Air prefilter	●
The cooling assembly in 50°C (122°F) ambient temperature	●
Dust screen for radiator	●
Fuel-water quickly release device	●
Coolant heater (Diesel)	○
Electric controlled silicon-filled viscous clutch	●
Fuel filling pump	○
Air pressure difference indicator	●
Auto idle	●

Cab & interior	
Pressurized cab	●
Air suspension seat with heater	●
Control box on left and right	●
Rain visor (Not mounted when front upper guard exists)	●
Front windshield divided by 70/30 ratio	●
Double laminated windshield and other tempered windows	○
Sliding upper door window	●
Air conditioner with defroster [Automatic][Pressurized]	●
Color LCD display with warning,filter / liquid refill and working hours information	●
Travel pedals with detachable manual control lever	●
Double stereo speaker	●
Cup holder	●
Coat hook	●
Washable floor mat	●
Safety belt	●
High and low travel speed switch	●
One-key boost	●
Sun visor	●
Skylight	●
Multi-gear windshield wiper with intermittent feature	●
File packet	●
Emergency exit on rear windows	●
Hammer for emergency escape	●

Conterweight	
4.2t (9,259 lb)counterweight	●

Lubrication system	
Manual centralized lubricating system	●
Electric auto lubrication system	○
Arm centralized lubrication system	○

Hydraulic system	
Auxiliary hydraulic valve	●
Single or dual way pipeline	●
Quick coupler piping	●
Rotary attachment piping	●
Hydraulic oil ISO VG 46	●
Hydraulic oil ISO VG 32	○
Hydraulic oil ISO VG 68	○
Electric proportional joysticks	●
Spare valve plate	●
Pressure monitor gauge	●

Boom, arm and bucket	
Boom-5.68 m(18'8")	●
Arm-2.91 m(9'7")	●
Reinforced bucket-1.05 m³ (1.37 yd³)/1 354 mm(53")	○
Arm-2.4 m(7'10")	○
Rock bucket-0.9 m³ (1.18 yd³)/1 060 mm(42")	○
Rock bucket-1.0 m³ (1.31 yd³)/1 146 mm(45")	○
Reinforced bucket-1.2 m³ (1.57 yd³)/1 356 mm(53")	●
Ditching bucket-0.5 m³ (0.65 yd³)/608 mm(24")	○
Reinforced bucket-1.0 m³ (1.31 yd³)/1 346 mm(53")	○
Earthwork bucket-1.2 m³ (1.57 yd³)/1 531 mm(60")	○
Mucking bucket-0.71 m³ (0.93 yd³)/2 000 mm(79")	○

Undercarriage	
Track guards for both sides	●
2×9 bottom rollers	●
2×2 carrier rollers	●
Tow ring on the bottom frame	●
Guard kits: Bottom sealing plate of undercarriage, sealing plate of travel motor	●
Track with 2×49 triple grouser shoes, 600 mm(24")	○
Track with 2×49 triple grouser shoes, 700 mm(28")	○
Track with 2×49 triple grouser shoes, 800 mm(31")	●

Attachments	
Quick Coupler	○
Thumb	○
Breaking Hammer	○
Scarifier	○
Vibratory	○
Orange peel grab	○
Timber grab	○
Grapple	○
Vehicle dismantling shear	○
Straight breaking hammer	○
Scrap shear	○
Crushing pliers	○
Compactor	○
Hydraulic shear	○

Electrical system	
Battery (2×850 CCA)	●
70 A alternator	●
7.8 kW starter motor	●
USB interface(5 V)	●
Emergency stop switch	●
Rightview camera	●
Rearview camera	●
AM-FM radio with digital display	●
DAB Bluetooth digital radio	○
Travel buzzer with switch	○
Rotating beacon	●
Two front working light on the cab(LED)	●
One rear working light on the cab(LED)	●
Two working lights on the boom(LED)	●
12 V electric power port	●
Interior light	●

Safety and guards	
Anti collision beam	○
Lock for the cab door and each cabin	●
Warning horn	●
The quick coupler button with warning	●
Isolation plate between engine and pump chamber	●
Battery disconnect switch	●
Overheating warning	●
Safety handrail and pedal	●
Anti-skid plate/anti-skid paste	●
Hydraulic safety locking lever	●
Left and right rearview mirrors	●
Counterweight rearview mirror	○
Anti-burst valve on the boom	●
Anti-burst valve on the arm	○
Roll over protective structure(ROPS)	●
Operator protective guard(OPG)	○
Safety net on the front lower windshield	●

Standard: ●
Optional: ○

· Some of these standard or optional equipment may not be available for certain markets.

· Pictures may include attachments and optional equipment that are not available in your area. · Materials and specifications are subjected to change without advance notice.

· Please contact your local XCMG dealer for more information on availability or to customise your machine to suit your applications requirements.

Optimum Services , XCMG Guaranteed



XCMG approved attachments



Genuine parts



Financial solutions



Maintenance contract



Telematics



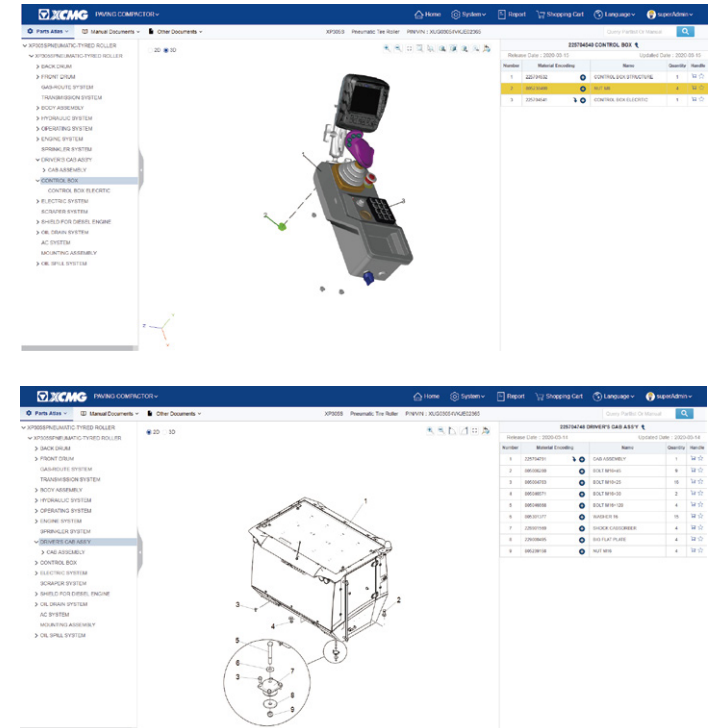
Professional Integrated Complete Solutions

XCMG group has built a strong reputation based on the quality, reliability and durability of its construction machinery. What's more, XCMG has gradually established a service network to constantly provide its local integrated and highly efficient complete solutions for all customers.

Full Range of Services Ready for you

In order to respond to your needs as fast as possible, XCMG experts are on their way to your job site from one of our facilities near you. Full range of services are available in order to reduce your total cost of ownership and increase your revenue.

XCMG Global Spare parts System



Mobile cranes



Excavators



Aerial work platforms



Wheel loaders



Road machinery



