



All Rights Reserved

Materials and specifications are subject to change without notice.  
Featured machines in photos may include additional equipment.  
See your XCMG dealer for available options.



# XE210U

## Hydraulic Excavator

EPA Tier4



[www.xcmg.com](http://www.xcmg.com)

**XCMG Regional Departments:**

Europe	(+86-516) 87739703 87739218 87739537	Africa	(+86-516) 87735009 87739222 87739283
West Asia & North Africa	(+86-516) 87739702 87739202 87739223	Central Asia	(+86-516) 87739236 87739239 87739538
Asia-Pacific	(+86-516) 87739128 87739500 87739529	America	(+86-516) 87739285 87739551 87739710

XUZHOU CONSTRUCTION MACHINERY GROUP IMP. & EXP. CO., LTD

Add: No.1, Tuolanshan Road, Xuzhou Economic Developing Zone, Jiangsu, China 221004

Fax: (+86-516) 87739230

E-mail: [export@xcmg.com](mailto:export@xcmg.com)

## Advanced Configuration

### Ecological and economical

- ▶ Customized XCMG exclusive engine can meet Euro stage IV Emission Standard
- ▶ Adopt redox and exhaust gas recirculation technologies to reduce gas emission.
- ▶ Operations in ECO mode can save more fuel for you.

### Excellent after-sales service

- ▶ Global after-sales service system and quick response mechanism.
- ▶ Real-time technical consultation and maintenance.

### Convenient maintenance

- ▶ Easy maintenance design, open the engine hood for no dead angle maintenance.
- ▶ 500h maintenance period.

### Multiple applications

- ▶ Different boom, arm and bucket combinations can adapt to as many working conditions as possible.
- ▶ Multi-functional work tool system can meets various operational requirements including digging, breaking, thump plier and so on.

### Comfortable operating experience

- ▶ Air conditioner and heater ensure the appropriate temperature.
- ▶ Rear camera and right camera provide better view.
- ▶ Air suspension seat equipped with electric heating function.
- ▶ Integrated control panel and large display screen provide multiple information.

### Safe and durable

- ▶ Upgrade undercarriage to improve load bearing performance.
- ▶ Strengthened key stress-bearing parts of chain links.
- ▶ Anti-rolling cab improves safety.



## Ecological And Economical

- ▶ As the latest jointly developed environment-friendly engine that meets Euro stage IV emission Standards, XE210U uses the redox technology and exhaust gas recirculation technology to reduce nitrogen oxide emission to 0.4g/kWh, efficiently reducing harmful substances discharged into the atmosphere.



- ▶ The new-type negative flow main control valve featuring large diameter and low pressure loss, can reduce pressure loss by 30%, and realize high transmission efficiency; the newly developed meso-position unloading valve can reduce standby pressure from 4 Mpa to 0.3 Mpa and save energy by about 2%; the cancellation of boom priority valve helps eliminate throttling energy loss, saving about 1.7% of energy in leveling operation and 3.8% of energy in loading operation.



## Comfortable And Reliable

### Comfortable

- ▶ Brand-new Air conditioner and heater: Indoor and outdoor ambient temperature can be perceived through sensors and automatically adjusted to comfortable temperature. A good comfortable environment for operators can be provided with the cooperation of a multi-position adjustable air outlet.

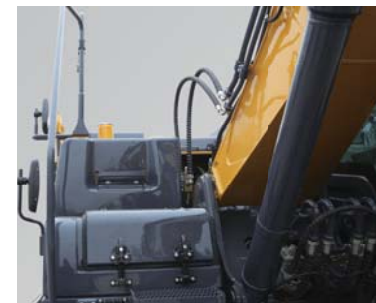


- ▶ Comfortable high-performance seats: air suspension seats with electric heating functions can achieve multi-dimensional adjustment and isolation of vibration waves.
- ▶ New generation of instruments: high-end 7-inch large screen display, detailed page layout, clear picture quality, reserved video display function in addition to main functions, and supporting a variety of video formats.



### Reliable

- ▶ The longitudinal beam is changed from hill type to half-hill type, reinforced ribs are added both inside and outside the guide holder, both left and right ribbed slabs of X frame are thickened by 6 mm, the cross section is heightened by 39mm and the cover plate is thickened by 2 mm, the stiffness of the whole chassis is better.
- ▶ Key stress-bearing parts of chain links are strengthened, and strength and impact resistance of chain links are improved, so the service life of crawler is prolonged.



- ▶ The boom uses the swallow tail design at the boot to reduce stress concentration. The side plate of the arm is thickened by 2 mm, and the front end uses T-sleeve with XCMG patent. The boom and arm use the forged axle bases to increase wear resistance after thermal refining.

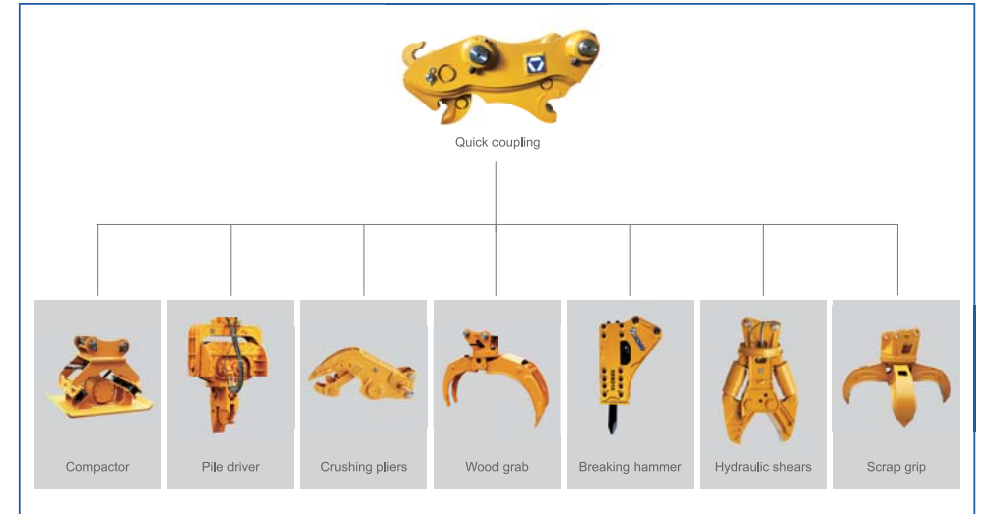


- ▶ The side beam of turntable uses D-shaped pipe structure to improve the ability of turntable to resist external impact. Robot welding technology is used in the main body of turntable to improve durability and safety of structural parts.
- ▶ ROPS certified cab can be equipped with top guard, front guard and side guard the requirements of anti-falling objects, and further improving the safety of the cab. Rear camera and right camera have better view.



## Multiple Applications

- ▶ The independently developed multi-functional intelligent work tool control system can realize crushing, shearing, cleaning, compacting, milling, transporting, pinching, grasping, scraping, loosening, lifting, and other operations, and can truly integrate multiple operations into one machine.
- ▶ With first-rate digging force, the machine can be fully competent under complicated working conditions.



## Maintenance And Service

- ▶ Central electrical box, air filter, diesel filter, oil filter and pilot filter are all accessible for maintenance, which can reduce the maintenance time by 10%.
- ▶ Long maintenance period: Self-lubricating bearings are used at hinges of working devices, whose maintenance period can reach 500 hours. Maintenance periods of engine oil, oil filter element, and fuel filter element can be doubled to 500 hours using XCMG's proprietary technologies, so the maintenance periods are greatly prolonged.
- ▶ A wide range of after-sales service system, quick-response rescue mechanism to ensure that you use at ease.



## Standard Equipment

	Name of equipment	XE210U	Hydraulic system	Gauge pressure monitoring
Engine	Engine model	QSB6.7		Pressurized cab
	Emission level	Satage IV		Fully adjustable mechanical suspension seat
	Automatic preheating			Air suspension seat with cushion heating
	Oil-water separator with water level indication sensor			Adjustable seat armrest
	Radial seal air cleaner			Seat belt (51 mm [2 "] wide)
	Air prefilter			Openable windscreen with auxiliary device
	50°C high temperature ambient cooling assembly			Front windshield divided by 70/30 ratio
	Radiator dust screen			Double laminated windshield and other toughened windows
	Fuel marker			Sliding door upper window
	Oil-water quick release device			Bi-directional air outlet air conditioner with defroster (automatic type) (pressurization function)
	Electronically controlled silicone oil clutch			Control handle
	Fuel filling pump 50L / min			Travel control pedal with detachable manual control lever
	Fuel breather valve			Two stereo speakers
	Air pressure difference indicator		Cab and interior trim	Beverage cup holder
	Automatic idle speed			Coat and hat hook
Hydraulic system	Boom/arm flow regeneration			Cleanable floor mat
	Auxiliary hydraulic valve			Air conditioning system
	Reverse rotation damping valve			High and low gears shift
	Automatic rotation parking brake			One-key boost mode
	Hydraulic buffer valve			Reserve switch for working aids
	Straight hydraulic circuit			Electric sunshade curtain
	Boom priority valve			Top sunroof
	Rotary logic valve			Intermittent multi-gear wiper
	Hydraulic oil ISO VG 46			Cup holder/envelope
	Hydraulic pipeline: breaking hammer and thumb clamp			Cold and warm storage box
	Operation mode switching			Radio receiver
	Rotary anti-sway valve		Safety and security configuration	Driving door locks and cabin locks
	Spare valve plate			Alarm horn

Safety and security configuration	Isolation plate between engine and oil pump chamber		Working device	Boom
	Engine Emergency Stop Switch			Arm 2.91 m
	Rear window emergency exit			Bucket 1.05M3 Strengthened Bucket
	Battery circuit breaker			Arm 2.4 m
	Boom and arm retaining valve			Battery (2× 850CCA)
	Explosion-proof valve for boom pipeline			70A alternator
	Overheat alarm		Electrical system	7.8 kW starter motor
	Safety handrails and pedals			Travel alarm
	Rotary alarm lamp			12V cigarette lighter
	Anti-skid plate/anti-skid paste			Camera
	Hydraulic safety locking lever			5V USB interface
	Emergency escape hammer			Right and left boom work lights
	Left and right rearview mirrors		Lighting lamp	Right working light installed on storage box
	Counterweight rearview mirror			Cab interior lighting
Chassis system and shield	Bottom frame traction ring		Counterweight	4.25 t counterweight
	600 mm (24 ") three-rib track shoe			XEICS intelligent control system
	Protective device kit: chassis bottom sealing plate, walking motor sealing plate		Technology	Data link socket
	Track double rail protector			

## Optional Equipment

Cab and interior trim	Name of equipment	XE210U	Roll over protective structure (ROPS)	
	Oil-water separator with heater (24V)			Falling object protective structure (FOPS)
Engine	Oil bath type air prefilter			Track single rail protector
	Coolant heater (fuel type)			230 mm (24 ") double-rib track shoe
	Rapid fuel filling system			700 mm (28 ") three-rib track shoe
Hydraulic system	Hydraulic oil ISO VG 32, 68		Chassis system and shield	800 mm (31 ") double-rib track shoe
	Retractable seat belt (51 mm [2 "] wide)			600 mm (24 ") three-rib track shoe
	Vehicle mounted oxygen supply device			800 mm (31 ") three-rib track shoe
Cab and interior trim	Fire extinguisher			Track rubber block
	Explosion-proof valve for arm pipeline			Full-length track guard ( two-piece, lower frame needs to be replaced )

Working device	1.0m <sup>3</sup> Rock bucket	Working device	Scrap grapple
	1.2m <sup>3</sup> Earthwork bucket		Screening bucket
	Quick coupler		Pipe grab
	Hydraulic breaker		24V cigarette lighter
	Hydraulic thumb pliers		12V power interface
	Ripper		Front working light installed on cab top
	Vibratory plate compactor		Rear working light installed on cab top
	Hydraulic shear		200 kg auxiliary counterweight
	Grapples		Electric self-lubricating system
	High frequency crusher		Arm concentration
	Clamshell bucket		

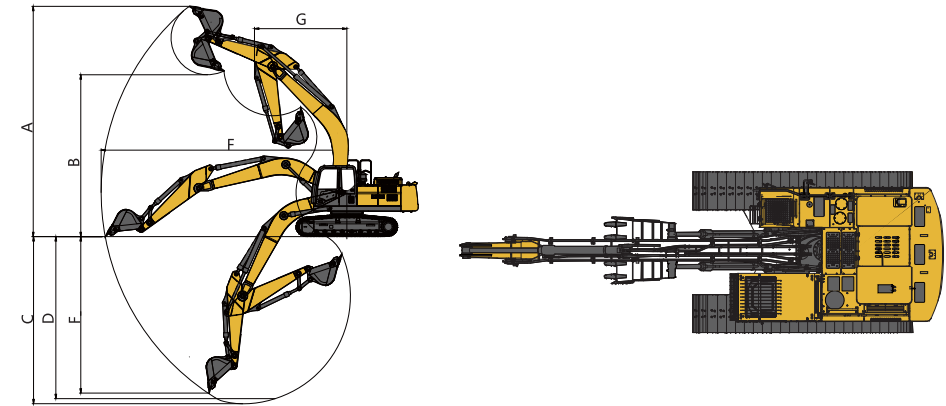
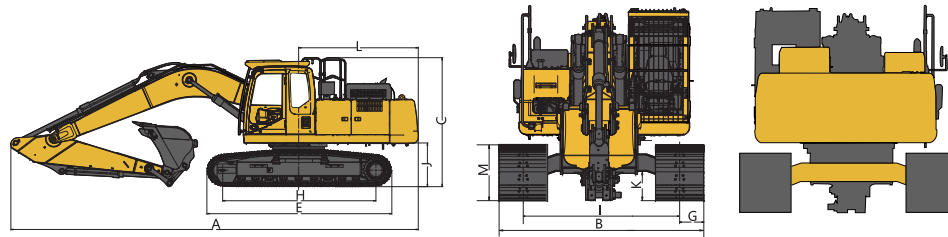
## Main Specifications

Item	unit		Main specifications	
Model	/	/	XE210U	XE210U
Operation weight	lb	Kg	46297-50706	21000-23000
Bucket capacity	yd <sup>3</sup>	m <sup>3</sup>	1.05-1.57	0.9-1.2
Engine	Model	/	/	Cummins QSB6.7 Cummins QSB6.7
	Direct injection	/	/	√
	Four strokes	/	/	√
	Water cooling	/	/	√
	Turbo-charging	/	/	√
	Air-to-air intercooler	/	/	√
	No.of cylinders	/	/	6
	Rated power	hp/rpm	kw/rpm	173/2100 129/2100
	Maximum torque/speed	lb.ft/rpm	N.m/rpm	590/1500 800/1500
	Displacement	gal	L	1.8 6.7

Item	unit		Main specifications	
Main performance	Travel speed (H/L)	mph km/h	3.5/2.2	5.6/3.5
	Swing speed	r/min r/min	11.8	11.8
	Gradeability	° °	≤35	≤35
	Ground pressure	psi kPa	7	45
	Bucket digging force	lbf kN	33496.7	149
	Arm digging force	lbf kN	24953.9	111
	Maximum tractive force	lbf kN	41365	184
	Main pump	/ /	/	/
Hydraulic system	Rated flow of main pump	gal/min L/min	118.9	2×225
	Main safety valve pressure	psi MPa	4975/5366	34.3/37
	Travel system pressure	psi MPa	4975	34.3
	Swing system pressure	psi MPa	3989	27.5
Oil Capacity	Pilot system pressure	psi MPa	566	3.9
	Fuel tank capacity	gal L	105.7	400
	Hydraulic tank capacity	gal L	63.4	240
Standard	Engine oil capacity	gal L	6.3	24
	Length of boom	ft/in mm	18'7"	5680
	Length of arm	ft/in mm	9'6"	2910
	Bucket capacity	yd <sup>3</sup> m <sup>3</sup>	1.37	1.05

## Dimensions

Item	Unit		Parameters	
A Overall length	ft/in	mm	33'6"	10220
B Overall width	ft/in	mm	10'6"	3190
C Overall height	ft/in	mm	10'5"	3180
D Width of platform	ft/in	mm	9'4"	2830
E Track length	ft/in	mm	14'7"	4455
F Overall width of chassis	ft/in	mm	10'6"	3190
G Track shoe width	ft/in	mm	2'7"	800
H Wheel base of crawler	ft/in	mm	12'1"	3647
I Track gauge	ft/in	mm	7'10"	2390
J Counterweight clearance	ft/in	mm	3'6"	1056
K Min. ground clearance	ft/in	mm	1'7"	485
L Min. tail swing radius	ft/in	mm	9'10"	2985
M Track height	ft/in	mm	2'8"	810



## Lifting Capacity

Lifting point height (m)	Rated lift capacity – Straight ahead (back) (kg)					Rated lift capacity – over-side (kg)						
	Lifting point radius (m)					Lifting capacity at maximum radius	Lifting point radius (m)					Lifting capacity at maximum radius
	1.5	3	4.5	6	7.5		1.5/4.9	3/9.8	4.5/14.8	6/19.7	7.5/24.6	
7.5				*5030.7		*4638				4411.4		4229.7
6				*4938.2		*4326.2				4420.6		3173.2
4.5				*5363.9	4725.7	4259.4				4266.2	2986.8	2681.9
3				*6080.1	4620.8	3904.5			6103.6	4027.5	2890.9	2435.3
1.5			*9324.9	6251.2	4499.3	3776			5615.9	3799	2779.8	2334.2
Ground		*4968.2	9440.8	6064.9	4399.3	3850.9		9907.3	5357.4	3633.5	2688.3	2365
-1.5	*5614.4	*9343.5	9332	5972.6	4375.8	4169.5	*5614.4	*9343.5	5266.4	3551.6	2666.7	2548.7
-3	*10251	*14177	9413	6016.9		4925.3	*10251	10150	5334.2	3590.9		2996.6
-4.5		*11822	*8325.4			*6430.7		10478	5532.1			4153

Capacities marked with an asterisk(\*) are limited by hydraulic capacities.

## Working Range

Item	Unit		Parameters	
A Max. digging height	ft/in	mm	31'7"	9620
B Max. dumping height	ft/in	mm	22'2"	6780
C Max. digging depth	ft/in	mm	21'11"	6680
D Maximum depth cut for 2240mm(8 ft) level bottom	ft/in	mm	21'4"	6500
E Maximum vertical wall digging depth	ft/in	mm	18'8"	5715
F Max. digging radius	ft/in	mm	32'7"	9940
G Min. swing radius	ft/in	mm	11'7"	3530