

Hydraulic Excavators XE155UCR



XCMG FOR YOUR SUCCESS

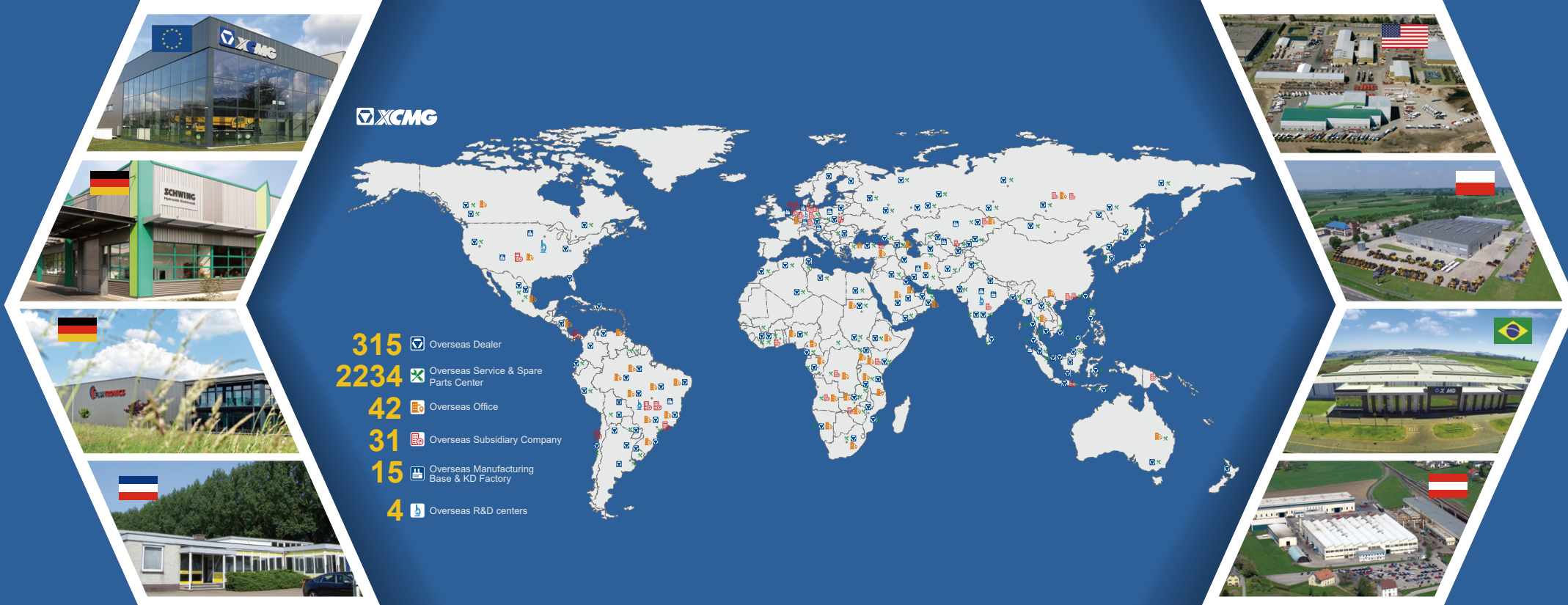
Rated Power: 90 kW (121 hp)
Operating Weight: 16 600 kg (36,596 lb)
Bucket Capacity: 0.65 m³ (0.85 yd³)

XCMG NORTH AMERICA CORPORATION
Add: 5145 Schirlls St. Las Vegas, Nevada 89118
Tel: +1 725 605 2777
Fax: +1 725 605 2888
E-Mail: bin@xcmg.com

XUZHOU CONSTRUCTION MACHINERY GROUP IMP. & EXP. CO., LTD
Add: N0.1, Tuolanshan Road, Xuzhou Economic Developing Zone,
Jiangsu, China 221004
Tel: +(86) 516 8773 9285
E-Mail: bin@xcmg.com



www.xcmg.com



INTRODUCTION OF XCMG

Founded in 1943, XCMG is the largest enterprise in the Chinese construction machinery industry. We offer the most diverse product line and the highest technological standards. We provide a comprehensive set of construction solutions, and we are the most internationally competitive firm in the industry. On KHL Yellow Table, we rank No. 1 in China and No.3 globally.

Across our offices in China, the US, Germany, India, and Brazil, XCMG has established a global collaborative research platform including national-level R&D facilities focused on advanced smart manufacturing technology. Our R&D team consists of top talents from around the globe. They are researching cutting-edge technologies such as new energy, unmanned driving and high-end parts. Our work has earned us numerous international patents and awards.

XCMG has the most comprehensive product line, meaning we can offer fully comprehensive solutions in 9 areas: hoisting, earthwork, road building & maintenance, mining, concrete & paving, tunnel-building & underground construction, high-altitude firefighting equipment & special-purpose vehicles, railway & bridge construction, sanitation engineering. All these solutions can be customized to suit our customers' needs.

At XCMG, our five-continent sales network gives our products worldwide visibility. We have 300 overseas distributors, over 10 overseas manufacturing bases and KD (Knockdown) factories, and products in more than 180 countries and regions. We supply our global customers with pre-sales, mid-sales and after-sales service, and a convenient, efficient one-stop financing and leasing service. XCMG's total annual exports and overseas income consistently come top of the industry in China.

We care deeply for the welfare of the people. We support numerous charitable causes, and are quick to the scene during disaster relief efforts.

XCMG is all set to become an eternal brand with our feet on the ground and eyes on the horizon. XCMG's ambition leads us forever forwards. XCMG is scaling its Everest, and is determined to reach the top.

The newly engineered XE155UCR builds on its reputation as one of the most sold and appreciated mid size excavators of XCMG. All systems have been designed on the basis of harmonious matching of sufficient power, hydraulic flow, versatility, low fuel consumption and mostly importantly the swing tail has been reduced to meet operations in confined spaces.

If you are looking for a tough machine from a durable brand you can trust to get your work done with efficiency, look no further than our XE155UCR. Its versatile design and innovative features delivery the performance you expect to do various difficult jobs.



Built to last

The robust design featuring state-of-the-art Cummins Tier 4 Final compliant engine, Kawasaki-KPM made main pump, valve, swing motor, and reliable travel motors, coupled with reinforced boom, arm, structural parts, and enlarged cylinders makes the XE155UCR a reliable machine that will live up to your every expectation during digging, breaking, grading and various applications.

Made to do more

Multiple sizes of buckets including 0.32-0.7 m³(0.42-0.92 yd³) Earthwork Bucket, 0.52-0.7 m³ (0.68-0.92 yd³) Strengthened Bucket, and 0.52 m³ (0.68 yd³) Rock Bucket plus increased digging force give you more options in different jobsites. Further with a wide range of attachments, the machine has more to offer.

Safety solutions

Every XCMG excavator engineer put efforts in the design with safety in mind, and the machine features a standard ROPS and optional OPG certified cab, rear view and right view cameras, emergency stop, guard rails, and 3 LED working lights. Further, anti burst valves are utilized in the boom and arm. Both the operator and people around the machine are well protected with these features.

Optional features give you more

The XE155UCR comes with every feature that the operator would expect in the industry. Additionally, it can always surprise you with multiple optional equipment such as various buckets, hydraulic thumb, timber grab, hydraulic shear, scrap shear, vibratory, etc.

Easy-to-use attachments

The self-developed multi-functional machine and attachment intelligent control system is supporting operations such as crushing, demolition, compacting, milling, hoisting and many more. The system supports the operator in an easy way in the most demanding and complicated tasks.

Operator comfort

To ensure operator comfort, it offers a spacious cab with low noise and reduced vibration by silicon-filled viscous mount and excellent all-round visibility. Fully adjustable heated air suspension seat and air conditioning with climate control as standard. The centralized control buttons and upgraded human machine interface cost no efforts during the operations.

Precise control

The 8" TFT LCD display has 8 attachment modes and 3 power modes and proportional joysticks with roller switch. The operator can finish demanding tasks with confidence and efficiency.

Powerful engine

The reliable Cummins B4.5 T4F engine delivers power and torque increased by more than 10% while reducing emissions and fuel consumption by adopting high pressure common-rail electronic injection system among other advanced technologies such as DPF(Diesel Particulate Filter),DOC(Diesel Oxidation Catalyst), and SCR(Selective Catalytic Reduction) to achieve less emissions of nitrogen oxide and other harmful exhaust.

Easy maintenance

The grouped filters and centralized lubrication points for boom, arm and bucket, easily accessed from the ground level, make daily maintenance efficient and safer at your jobsites. And all maintenance information can be displayed and reminded from the monitor for the operator.

Robust undercarriage

The CAE designed X-shape undercarriage enables even weight distribution, increasing stability, durability and prevents damage from rock and debris. And rubber track pads are available for operations in paved road constructions and other jobs that require extra care for the ground.

Reduced tail swing radius

The ultra-short tail gyration radius makes it easier to work in confined spaces. This machine has not only a short rear radius but also a short front turning radius. In urban areas it's a great advantage when you only need 13 feet to turn around.

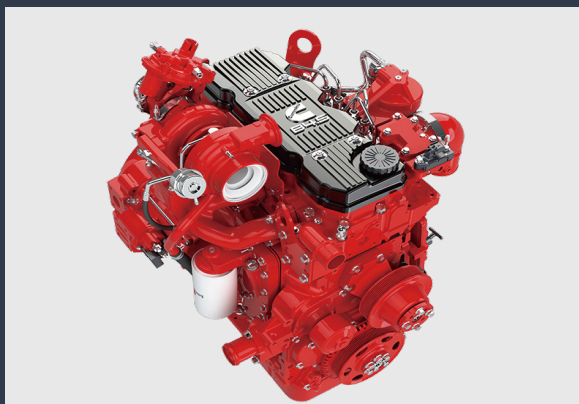


Excellent Performance and Fuel Economy

The power – Never compromise

The XE155UCR takes even the heaviest tasks with efficient, dependable performance that saves you time and money:

- Our customized environmentally friendly, high-torque and high-powered engine meets Tier 4 final emission standards. The DPF (Diesel Particulate Filter), DOC (Diesel Oxidation Catalyst) and SCR technology controls emission easily.
- The new electronic positive flow hydraulic system that has fast response and good coordination matches with the engine system in a reasonable way that minimizes fuel consumption. The non-linear power control technology is introduced into the main pump that can reduce the light-load output flow and increase heavy-load system power, Light load energy increases by 4% and heavy load efficiency increases by 3%.



POWER MATCH TECHNOLOGY

The XE155UCR is equipped with a Cummins B4.5 engine. Famous for its excellent fuel efficiency, reliability and long service intervals it combines exceptional power output and high torque at low revs.

Selective Catalytic Reduction (SCR) technology - combined with a Diesel Particulate Filter (DPF) – ensures compliance with Stage V regulations.

If the engine is the heart of the excavator, the XICS (XCMG Intelligent Control System) is its brain – providing a perfectly synchronized communication link between the engine's ECU (Electronic Control Unit) and the hydraulic system. The CANBUS (Controller Area Network) system enables a constant flow of information between engine and hydraulic system, so that power is delivered exactly as needed.

FUEL ECONOMY TECHNOLOGY

- A choice between 3 power modes and 8 attachment modes guarantees optimum performance under all conditions.
- Electronic control of fuel consumption.
- The auto-idle function reduces the engine speed when the controls are inactive for a preselected amount of time or when the safety lever is switched off. The engine will immediately return to its original selected speed when the operator touches the controls.
- For optimum cooling, the fan speed is controlled by a viscous clutch that results in lower fan noise with better fuel efficiency





— Easy hydraulic maintenance:

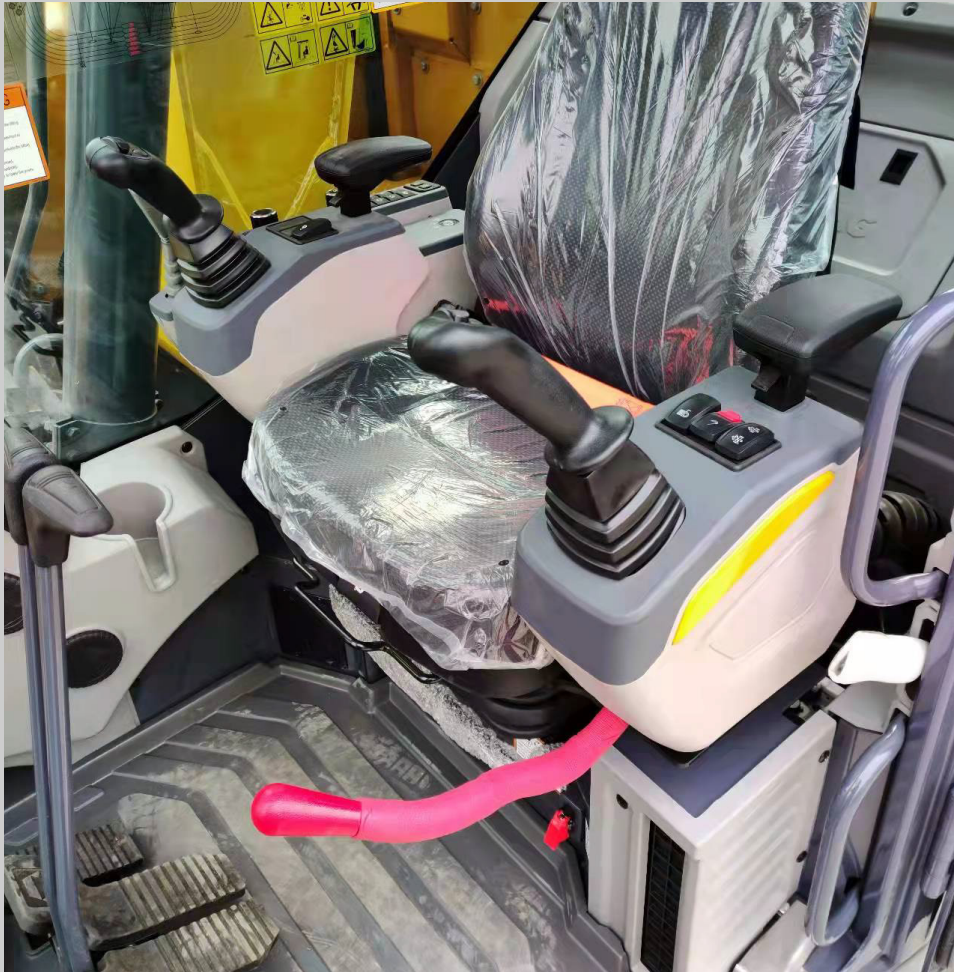
- 2000/4000 hours of hydraulic oil replacement (depending on the hydraulic oil type)
- Replace the hydraulic oil return filter after 500 hours
- Replacement of the hydraulic oil suction filter element after 2000 hours

— Less engine service:

- 500 hours engine diesel filter replacement
- 500 hours engine oil and filter replacement
- The long service intervals guarantee limited downtime.

First Choice for Comfort

The XE155UCR cabin is designed to support increased productivity with a spacious comfortable operator environment. The pressurized cab is ISO-certified for your safety and offers a comfortable heated fully adjustable air-suspension seat with several storage compartments and a clear all-round view of your jobsite. The reduced noise and vibration levels with automatic air-conditioning/-climate-control will make your workday more easy and comfortable.



Power

An industry-leading Cummins engine that saves on fuel and meets the Stage V/Tier 4 F emission regulations powers the XCMG XE155UCR.

Advanced control technology

Ergonomic, advanced and simple-to-operate - Kawasaki's proportional joystick delivers ultra-precise and smooth control over all movements.

The orientation of the joystick's rollers and the buttons is adjustable.

Air conditioning

The air conditioning has the function of heating and cooling. The air outlet direction can be adjusted by hand. Multiple wind speeds are also available.

Bluetooth/MP3/USB radio as standard and DAB radio as option

Bluetooth FM radio is fitted as standard and DAB radio can be ordered optionally.

Storage space

The new cab has 4 storage compartments – including a storage box for magazine/papers, and a cup holder.

Cab suspension

Even at the roughest applications where you are working, the cab's improved new suspension system dampens and smoothens out unwanted feedback from your jobsite.

Quick coupler control

A standard quick coupler hydraulic system with pipelines lets you exchange your attachment easily from the operator's seat. It facilitates the most common systems.



Simple and Easy Control

► Machine interface

All machine interfaces – including joysticks, keypad, panel, and larger LCD monitor – are ergonomically designed for optimum control and efficiency, resulting in increased productivity and workplace wellbeing. The switches have been simplified and climate control is now integrated into the keypad for easy adjustments.

- The new multi-function 8" TFT LCD monitor displays a comprehensive range of useful technical information, allowing you to check the machine's status and settings at a glance.
- Highly sensitive and low-effort joysticks and clear convenient controls enable you to work smooth and safely with minimum effort for increased comfort and efficiency.
- The newly adjustable proportional auxiliary functions support precise and smooth control of your attachments.

Intelligent monitor

The upgraded 8" TFT monitor features a day and night display with full user access to the machine settings and running data. Any abnormality is clearly displayed on the screen, allowing you to work safely and confidently with an accurate overview of all conditions.

All important data can be directly monitored from the main screen.

Dynamic power management

- Activating the power boost control system increases the digging force by 8.8 %
- Auto-idling starts 4 seconds after all controls are returned to the neutral position.

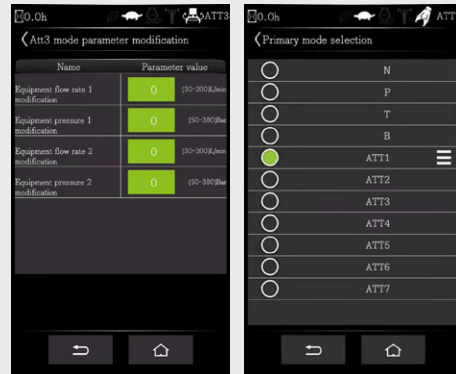
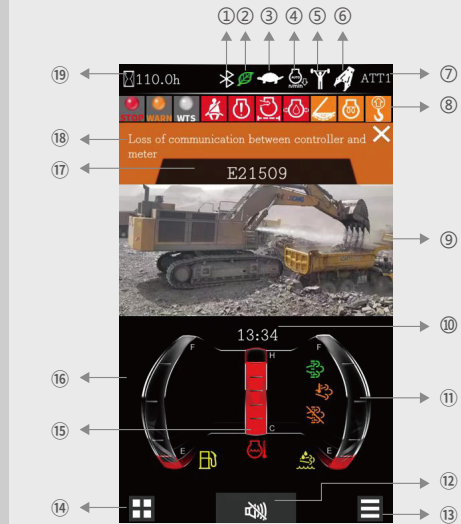


8 attachment modes and 3 power modes

Deliver the needed power according to your specific application while minimizing fuel consumption.

One click mode for quick selection and more convenient operation. Visual adjustment of pressure and flow parameters for more intelligent control.

1. Bluetooth
2. Energy saving icon
3. Travel speed (H/L)
4. Automatic idle
5. Power boost
6. Work mode
7. Mode and gear
8. Notification icon
9. Camera
10. Time and date
11. Urea level
12. Mute button
13. Main interface set
14. Menu
15. Coolant temperature
16. Fuel level
17. Fault code area
18. Fault description
19. Hour meter



► Designed for long-term robustness and safety

XCMG has developed one of the most rigorous strength and reliability testing procedures. The XCMG E-series features durability under the most extreme conditions and is therefore one of the most popular brands in its home market.

We continually manufacture the most durable machines in order to reduce the cost of ownership. The robust upper frame, undercarriage structure, and front attachments show their real value in tough working conditions and guarantee higher productivity.

Reinforced durability of the X-chassis

The X-shaped undercarriage has a higher durability than demanded on the jobsite, as proven through numerous tests including road tests and virtual simulation.

Undercarriage durability with easy maintenance

- The chain is composed of sealed, self-lubricating links for long-term performance
- Long life track tensioners and the idlers
- Heavy-duty wear resistant cast sprockets
- Durable lubricated track rollers

Strengthened boom and arm

FEA has been used to calculate the best load distribution throughout the machine's structure. For better protection of the base of the arm, reinforced bars have been added. The arm structure has been strengthened for the roughest conditions.

Hi-grade (high-pressure) hoses

The E-series uses a new type of high-pressure hoses with improved heat and pressure resistance to increase the durability of the machine.

Reinforced pin, bush, and polymer shim

The new series improved the lubricity of the connecting parts between the machine and attachments. Gaps with attachments are minimized by wear-resistant long-life pins, bushes and polymer shims, supporting the highest performance with invariable durability.



Maintenance

► Excellent serviceability

Our machines are designed for simple routine maintenance, while skilled XCMG technicians are available to provide extra support if needed. To get the most out of your machine, choose the package you need from a broad range of service agreements. Uptime, productivity, and residual value are all maximized, making the XE155UCR an economical and rewarding choice.

Simple and easy maintenance

- A large guard rail is installed along with anti-slip steps and plates, for safer and easier access to the upper structure.
- The cab's air-conditioning filter is lockable and placed on the cab's side for easy access.
- A battery cut-off switch to easily disconnect the battery for jobsite-required safety measures.
- Shut-off valves on the pre-filter piping line and fuel tank drain piping make servicing easier and prevent pollution from leakage.
- The engine parts can be reached easily via the top and side panels.
- For extra accessibility and servicing convenience, all filters (engine oil filter, fuel pre-filter, fuel filter, and hydraulic pilot filter) are located in the pump compartment.

Pre-start monitoring system

The XE155UCR has a pre-start monitoring system that shows you coolant temperature, hydraulic oil temperature, and engine oil pressure, fuel levels, and the AdBlue® level. It will also show fluid and filter intervals to keep the machine in top performing condition.

Proactive maintenance solutions

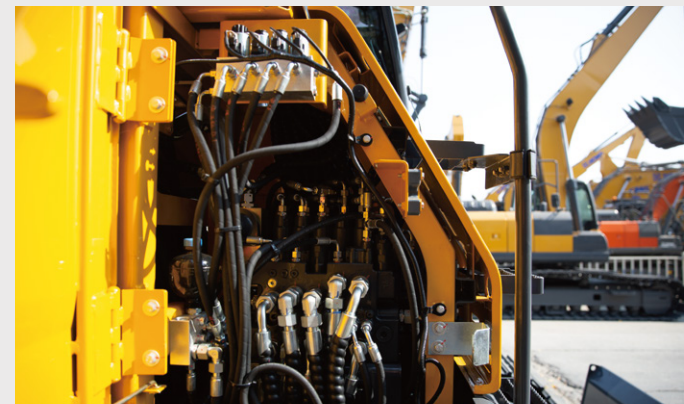
- Extended warranty: covering parts, travel, and labor
- Routine maintenance: your dealer will support you with routine service at regular intervals.
- Genuine parts: manufactured and tested to ensure long lifetime of your machine.

SCR tank and easy diesel filling

The ECU (Engine Control Unit) monitors the AdBlue® system with sensors and warns the operator of potential system malfunctions.

Centralized lubrication greasing points

To make maintenance easier.







Technical Specifications

Engine

Designed to deliver superior performance and fuel efficiency, the Cummins Tier 4 Final diesel engine fully meets the emissions regulations. To optimize machine performance, the engine uses high-pressure fuel injectors, a VGT™ turbocharger inter-cooler, and electronic engine controls. 4-cycle water-cooled, turbocharged, Selective Catalytic Reduction (SCR) with a Diesel Particulate Filter (DPF).

XE155UCR

Model	Cummins B4.5
No. of cylinders	4
Rated power at 2200 rpm (SAE J1995)	90 kW (121 hp) at 2200 rpm
Max. torque at 1500 rpm	500 N·m (369 lb.ft)
Idle (low - high)	950-1100 rpm
Piston displacement	4.5 L (275 in³)
Bore × stroke	107mm × 124 mm (4" × 5")
Starter	24 V × 4.8 kW (24 V × 6.4 hp)
Batteries - Alternator	2 × 12 V-70 A/24 V
Air filter	Donaldson's the latest PSD air filter and pre-filtered dust separator

Weight

XE155UCR

	Shoe width (mm/in.)	Operating weight (kg/lb)	Ground pressure (kPa/psi)
Triple grouser	600 (Std)/24"	16 670/36,751	34.8/5.1
	700/28"	16 850/37,148	30.1/4.4

Hydraulic system

The XICS (XCMG intelligent Control System) is the brain of the excavator - minimizing fuel consumption and enabling the efficiency of the hydraulic system to be optimized for all working conditions. To harmonize the operation of the engine and the hydraulics, the XICS is connected to the engine's electronic control unit (ECU) via a data transfer link.

- The hydraulic system enables independent and combined operations – 2-speed travel offers either increased torque or high travel speed
- Cross-sensing pump system and auto-deceleration system improves fuel efficiency.
- 7 attachment modes, 4 power modes - flow and pressure control of auxiliary hydraulic circuits from the control panel
- Computer controlled pump flow control

> Pumps flow & system pressure

XE155UCR

Main pumps, type:	2 × variable displacement tandem axial piston pumps
Maximum flow at 1800 rpm	2×113.4 L/min (2×30 gal/min)
Pilot pump, type:	Gear pump
Maximum flow at 1800 rpm	18 L/min (4.8 gal/min)
Relief valve settings:	
Pressure up	350/380 kgf/cm² (4,978/5,405 psi)
Travel	350 kgf/cm² (4,978 psi)
Swing	255 kgf/cm² (3,627 psi)
Pilot	40 kgf/cm² (569 psi)

Undercarriage

Extremely robust construction throughout - made of high-quality, durable materials, with all welded structures designed to limit stresses.

- Lifetime lubricated track rollers, idlers and sprockets fitted with floating seals
- Track shoes made of induction-hardened alloy with triple grouser
- Heat-treated connecting pins
- Hydraulic track adjuster with shock-absorbing tension mechanism

> Number of rollers and track shoes per side

XE155UCR

Upper rollers (standard shoe)	2
Lower rollers	7
Number of links and shoes per side	46
Overall track length	3 733 mm (12'3")

Cab

Optimal climate control is provided by the integrated air-conditioning and heating system. An automatically- controlled fan supplies the pressurized and filtered cab air, which is distributed throughout the cab from multiple vents. The fully adjustable heated air suspension operator's seat includes a seat belt. The operator can adjust the ergonomic seat and joystick console separately according to his preferences.

> Noise emission

XE155UCR

Noise level LpA(IOS 6396)	73 dB(A)
Noise level LwA(IOS 6395)	99 dB(A)



Technical Specifications

Component weights

Item	Unit	XE155UCR	Remarks
Upper structure without front attachment	kg/lb	9 000(19,842)	With counterweight
Lower structure assembly	kg/lb	5 470(12,059)	600 mm/24" shoe
Front assembly	kg/lb	2 130(4,696)	Without cylinder
Counterweight	kg/lb	3 300(7,275)	Standard counterweight
Boom	mm/kg(ft/lb)	4 600/904(15'1"/1,993)	Not including bushing
Arm	mm/kg(ft/lb)	2 520/435(8'3"/959)	Not including bushing

Drive

An independent, high-torque axial piston motor through a planetary reduction gearbox drives each track. Two levers with foot pedals guarantee smooth travel with counter-rotation on demand. The track frame protects the travel motors with hydraulically released multi-disc brakes and planetary gears.

> Speed & traction

XE155UCR	
Travel speed (low - high)	2.9- 4.7 km/h (1.8-2.9 mph)
Maximum traction	134 kN (30,124 lbf)
Maximum gradeability	35°/70%

Hydraulic cylinders

High-strength steel piston rods and cylinder bodies. Shock-absorbing (cushion) mechanism fitted in all cylinders for shock-free operation and extended piston life.

Cylinders	Quantity	Bore × rod diameter × stroke (mm/in)
Boom	2	105 × 70 × 941 (4.1 × 2.8 × 37)
Arm	1	115 × 80 × 1 120 (4.5× 3.1 × 44.1)
Bucket	1	100 × 70 × 852 (3.9× 2.8 × 33.5)

Buckets

Bucket type	Capacity (m³/yd³) SAE	Width (mm/in.)		Weight (kg/lb)	Boom 4.6 m/15'1"
		With side cutters	W/o side cutters		Arm 2.52 m/8'3" Shoe 600 mm/24"
GP	0.32/0.42	600/24	600/24	376/829	A
	0.4/0.52	880/35	822/35	430/948	A
	0.6/0.78	1 096.9/43	1 040.2/43	501/1,105	B
	0.7/0.92	1 239/49	1 182.2/49	539/1,188	C
HD	0.52/0.68	1 012/40	1 012/40	497/1,096	A
	0.55/0.72	1 040/41	1 040/41	515/1,135	A
	0.6/0.78	1 112.4/44	1 112.4/44	528/1,164	B
	0.65/0.85	1 160/46	1 160/46	538/1,186	B
SD	0.7/0.92	1 258.4/50	1 258.4/50	569/1,254	C
	0.52/0.68	930/37	930/37	513/1,131	A

Swing mechanism

The swing mechanism uses an axial piston motor, driving a 2-stage planetary reduction gear for maximum torque bathed in oil.

- Swing bearing: single-row, shear type ball bearing with induction hardened internal gear
- Internal gear and pinion immersed in lubricant

> Swing speed & torque

XE155UCR	
Maximum swing speed	11.3 rpm
Maximum swing torque	34 kN·m (25,077 ft·lb)

> Fluid capacities

XE155UCR	
Fuel tank	200 L (52.8 gal)
Cooling system (radiator)	18.9 L (5 gal)
Urea (DEF) tank	16.9 L (4.5 gal)
Hydraulic oil tank	90 L (23.8 gal)
Engine oil	11 L (2.9 gal)
Swing drive	1.8 L (0.5 gal)
Travel device	2 × 2.1 L (2 × 0.6 gal)

GP: General purpose; HD: Heavy duty; SD: Severe duty;

A: Suitable for materials with a density less than or equal to 2100 kg/m³ (131.1 lb/ft³)

B: Suitable for materials with a density less than or equal to 1800 kg/m³ (112.37 lb/ft³)

C: Suitable for materials with a density less than or equal to 1500 kg/m³ (93.64 lb/ft³)

Based on ISO 10567 and SAE J296, arm length without quick-coupler. For reference only.



Lifting Capacities

XE155UCR

Standard track width: 2 590 mm (8'6") · W/o bucket (kg/lb)

Lpr (m/ft) Lph (m/ft)	A		1.5 m (5 ft)		3.0 m (10 ft)		4.5 m (15 ft)		6.0 m (20 ft)		7.5 m (25 ft)		Max. reach		A(mm/ft)
	B														
Boom 4.6 m/15'1" Arm 2.52 m/8'3" Shoe 600 mm/24" Counterweight 3.3 t/7,275 lb	7.5/25				3 560 7,850	3 560 7,850							2 660 5,865	2 660 5,865	3 580/11'9"
	6.0/20						3 270 7,210	3 270 7,210					2 140 4,719	2 140 4,719	5 360/17'7"
	4.5/15				3 780 8,335	3 780 8,335	4 320 9,526	3 700 8,159	3 180 7,012	2 360 5,204			2 020 4,454	2 020 4,454	6 460/21'2"
	3.0/10				7 360 16,229	7 360 15,347	5 370 11,841	3 820 8,423	4 140 8,114	2 520 4,961			2 010 4,432	2 010 4,013	6 920/22'8"
	1.5/5				8 260 18,213	6 380 13,539	6 360 12,502	3 570 7,519	4 140 7,850	2 380 4,939			2 080 4,586	1 910 3,925	7 130/23'5"
	Ground Line				7 220 15,920	6 440 12,965	6 080 11,951	3 420 7,012	4 120 7,850	2 340 4,851			2 340 5,160	1 840 3,771	6 860/22'6"
	-1.5/-5	5 240 11,554	5 240 11,554		10 550 23,263	6 320 13,054	6 180 11,466	3 460 7,232	4 060 7,762	2 280 4,586			2 850 6,284	2 120 4,454	6 400/20'12"
	-3.0/-10	9 040 19,933	9 040 19,933		8 460 18,654	6 330 13,539	6 120 12,260	3 440 7,188					4 080 8,996	2 720 5,557	5 280/17'4"
	-4.5/-15														

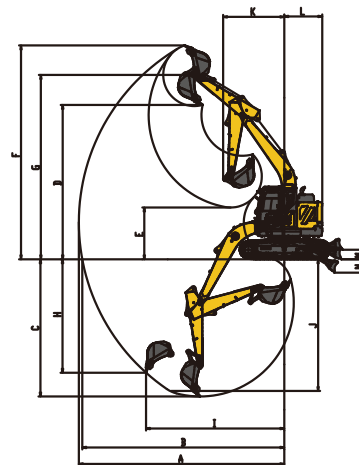
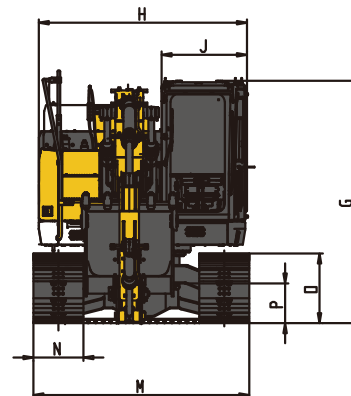
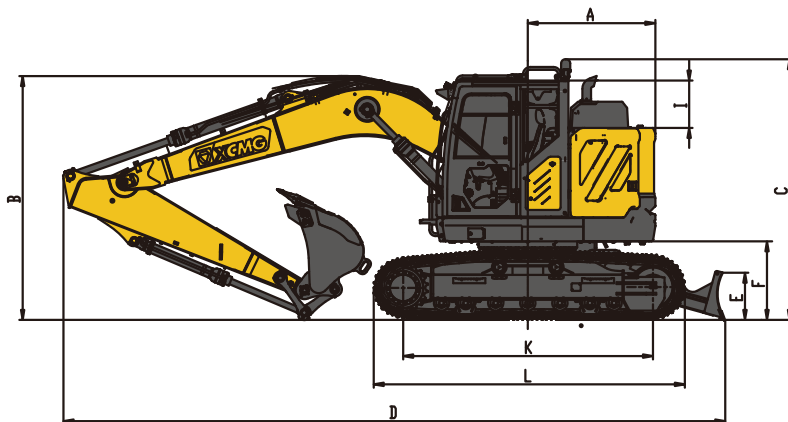
: Over front

: Over side or 360°

1. The lifting capacity is based on the ISO10567 standard.
2. * = The maximum lifting capacity is limited by the hydraulic capacity of the machine.
3. The lifting capacity does not exceed 87% of the hydraulic capacity or 75% of the tipping load with the machine on level and firm ground.
4. The operator should be familiar with the machines operating- and maintenance manual. Local regulations concerning the safe operation of machinery must be followed at all times.
5. The lift diagrams only covers machines that are originally built by XCMG: without lifting chains and any other lifting equipment.
6. When the excavator is used to lift or handle materials, it must comply with local regulations.



Technical Specifications



Dimensions

XE155UCR		mm/ft
Boom length - mm/ft		4 600/15'1"
Arm length - mm/ft		2 520/8'3"
Bucket capacity - m ³ /yd ³		0.65/0.85
A	Tail swing radius	1 530/5'
B	Shipping height (boom)	2 924/9'7"
C	Shipping height (alarm lamp)	3 127/10'3"
D	Shipping length	7 940/26'1"
E	Blade height	573/23"
F	Counterweight clearance	942/37"
G	Height over cab	2 907/9'6"
H	Upper structure width	2 497/8'2"
I	Cab height above engine hood	568/22"
J	Cab width	1 024/3'4"
K	Tumbler distance	2 997/9'10"
L	Track length	3 733/12'3"
M	Undercarriage width	2 590/8'6"
N	Shoe width std.	600/24"
O	Track height	836/33"
P	Ground clearance	476/19"

Working range

XE155UCR		mm/ft
Boom length - mm/ft		4 600/15'1"
Arm length - mm/ft		2 520/8'3"
Bucket capacity - m ³ /yd ³		0.65/0.85
A	Max. digging reach	8 295/27'3"
B	Max. digging reach(ground)	8 155/26'9"
C	Max. digging depth	5 535/18'2"
D	Max. unloading height	6 185/20'4"
E	Loading height	2 088/6'10"
F	Max. digging height	8 640/28'4"
G	Max. bucket pin height	7 449/24'5"
H	Max. vertical wall depth	4 580/15'
I	Max. radius vertical	5 580/18'4"
J	Max. depth cut for 2440mm(8ft) level bottom	5 312/17'5"
K	Min. swing radius	2 475/8'1"
L	Min. tail swing radius	1 530/5'
M	Max. blade lifting height	388/15"
N	Max. blade cutting depth	367/14"

Digging forces (ISO)

XE155UCR		mm/ft
Boom length - mm/ft		4 600/15'1"
Arm length - mm/ft		2 520/8'3"
Bucket capacity - m ³ /yd ³		0.65/0.85
Bucket (Normal/Press. Up) -kN/lbf		99/107(22,256/24,055)
Arm (Normal/Press. Up) -kN/lbf		70.6/73.4(15,872/16,501)

>Standard and Optional Equipment

Engine

Urea tank AD Blue	●
Auto-preheating	●
Fuel-water separator with water level instruction sensor	●
Fuel-water separator with heater (24 V)	○
straight-flow air filter	●
Air prefilter	●
The cooling assembly in 50°C (122°F) ambient temperature	●
Dust screen for radiator	●
Fuel marker	●
Fuel-water quickly release device	●
Air pressure difference indicator	●
Auto idle	●

Cab & interior

Pressurized cab	●
Air suspension seat with heater	●
Control box on left and right	●
Rain visor (Not mounted when front upper guard exists)	●
Front windshield divided by 70/30 ratio	●
Tempered glass	●
Sliding upper door window	●
Air conditioner with defroster and adjustable direction of air-out [Automatic][Pressurized]	●
Color LCD display with warning,filter / liquid refill and working hours information	●
Travel control pedal with detachable manual control lever	●
Double stereo speaker	●
Cup holder	●
Coat hook	●
Washable floor mat	●
Retractable safety belt	●
High and low travel speed switch	●
One-key boost	●
Reserved attachment switch	●
Sun visor	●
Skylight	●
Triple-gear windshield wiper with intermittent feature	●
File packet	●
Emergency exit on rear window	●
Hammer for emergency escape	●

Conterweight

3.3 t (7,275 lb)counterweight	●
-------------------------------	---

Lubrication system

Manual centralized lubrication	●
--------------------------------	---

Hydraulic system

Auxiliary hydraulic valve	●
Single or dual way pipeline	●
quick coupler pipeline	●
Rotary attachment pipeline	●
Hydraulic oil ISO VG 46	●
Hydraulic oil ISO VG 32	○
Hydraulic oil ISO VG 68	○
Electric proportional joysticks on right and right	●
Spare valve plate	●
Pressure monitor gauge	●

Boom, arm and bucket

Boom-4.6 m (15'1")	●
Arm-2.52 m (8'3")	●
Reinforced bucket-(0.65 m³/0.85 yd³)(1 160 mm/46")	●
Arm-3.01 m (9'11")	○
Rock bucket-(0.52 m³/0.68 yd³)/930 mm (37")	○
Earth work bucket-(0.7 m³/0.92 yd³)/1 239 mm (49")	○
Narrow bucket-(0.4 m³/0.52yd³)/(880 mm/35")	○
Ditching bucket-(0.32 m³/0.42 yd³)/ (600 mm/24")	○
Reinforced bucket-(0.52 m³/0.68 yd³)/(999 mm/39")	○
Reinforced bucket-(0.6 m³/0.78 yd³)/(1 113 mm/24")	○
Reinforced bucket-(0.7 m³/0.92 yd³)/(1 259 mm/50")	○
Earth work bucket-(0.6 m³/0.78 yd³)/(1 097 mm/43")	○
Quick Coupler	○
Thumb	○
Scarifier	○
Hydraulic shear	○
Orange peel grab	○
Timber grab	○
Grapple	○
Vehicle dismantling shear	○
Straight breaking hammer	○
Scrap shear	○
Crushing pliers	○
Compactor	○
Hydraulic shear	○

Undercarriage

Track guards for both sides	●
2×7 bottom rollers	●
2×2 carrier rollers	●
Tow ring on the bottom frame	●
2×46joints,171 mm (7")pitch,track with triple grouser shoes, 600 mm (24")	●
Guard kits: Bottom sealing plate of undercarriage, sealing plate of travel motor	○
Track with triple grouser shoes, 700 mm (28")	○
Track with triple grouser shoes, 800 mm (31")	○
Dozer blade	●
Rubber track , 600mm (24")	○

Electrical system

Battery(2×750 CCA)	●
70A alternator	●
24 V/2.9 kW starter motor	●
Cigarette lighter(12 V)	○
USB interface(5 V)	●
Emergency stop switch	●
Right and rear camera	●
AM-FM radio with digital display	●
DAB bluetooth digital radio	○
Rotating beacon	●
Two front working light on the cab(LED)	●
One rear working light on the cab(LED)	●
Two working lights on the boom(LED)	●
12 V Electric power interface	●
Interior light	●

Safety and guards

Lock for the cab door and each cabin	●
Warning horn	●
The quick coupler button with warning	●
Isolation plate between engine and pump chamber	●
Battery disconnect switch	●
Overheating warning	●
Safety handrail and pedals	●
Anti-skid plate/ anti-skid paste	●
Hydraulic safety locking lever	●
Rearview mirrors on left	●
Anti-burst valve on the boom	●
Anti-burst valve on the arm	●
Roll over protective structure	●
Operator protective guard	○
Top protective net	○
Protective net on upper front windshield	○
Protective net on lower front windshield	○

Standard: ●
Optional: ○

- Some of these standard or optional equipment may not be available for certain markets.
- Pictures may include attachments and optional equipment that are not available in your area. · Materials and specifications are subjected to change without advance notice.
- Please contact your local XCMG dealer for more information on availability or to customise your machine to suit your applications requirements.

Optimum Services , XCMG Guaranteed



XCMG approved attachments



Genuine parts



Financial solutions



Maintenance contract



Telematics



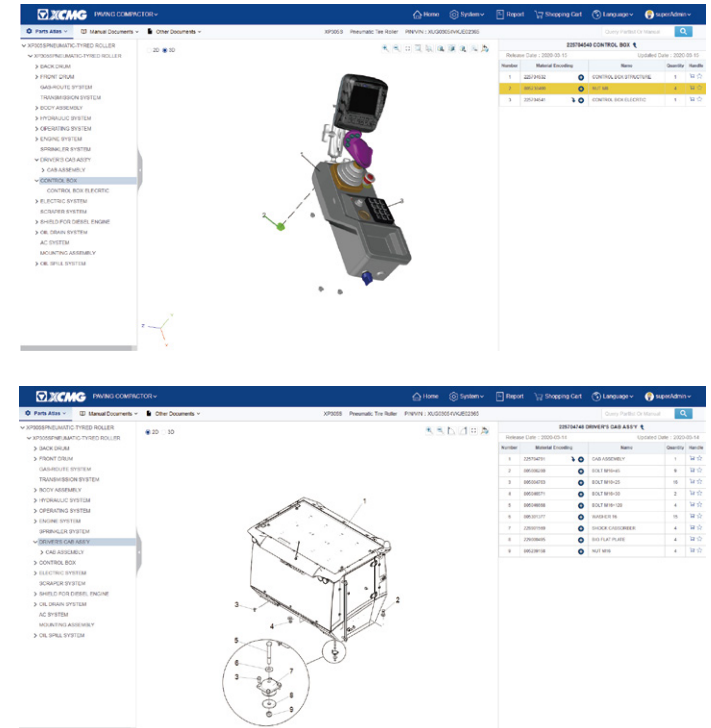
Professional Integrated Complete Solutions

XCMG group has built a strong reputation based on the quality, reliability and durability of its construction machinery. What's more, XCMG has gradually established a service network to constantly provide its local integrated and highly efficient complete solutions for all customers.

Full Range of Services Ready for you

In order to respond to your needs as fast as possible, XCMG experts are on their way to your job site from one of our facilities near you. Full range of services are available in order to reduce your total cost of ownership and increase your revenue.

XCMG Global Spare parts System



Mobile cranes



Excavators



Aerial work platforms



Wheel loaders



Road machinery





XCMG

XCMG FOR YOUR SUCCESS

