

WHEEL LOADER XC948U



XCMG FOR YOUR SUCCESS

EU Stage V/EPA Tier IV



XUZHOU CONSTRUCTION MACHINERY GROUP IMP. & EXP. CO., LTD

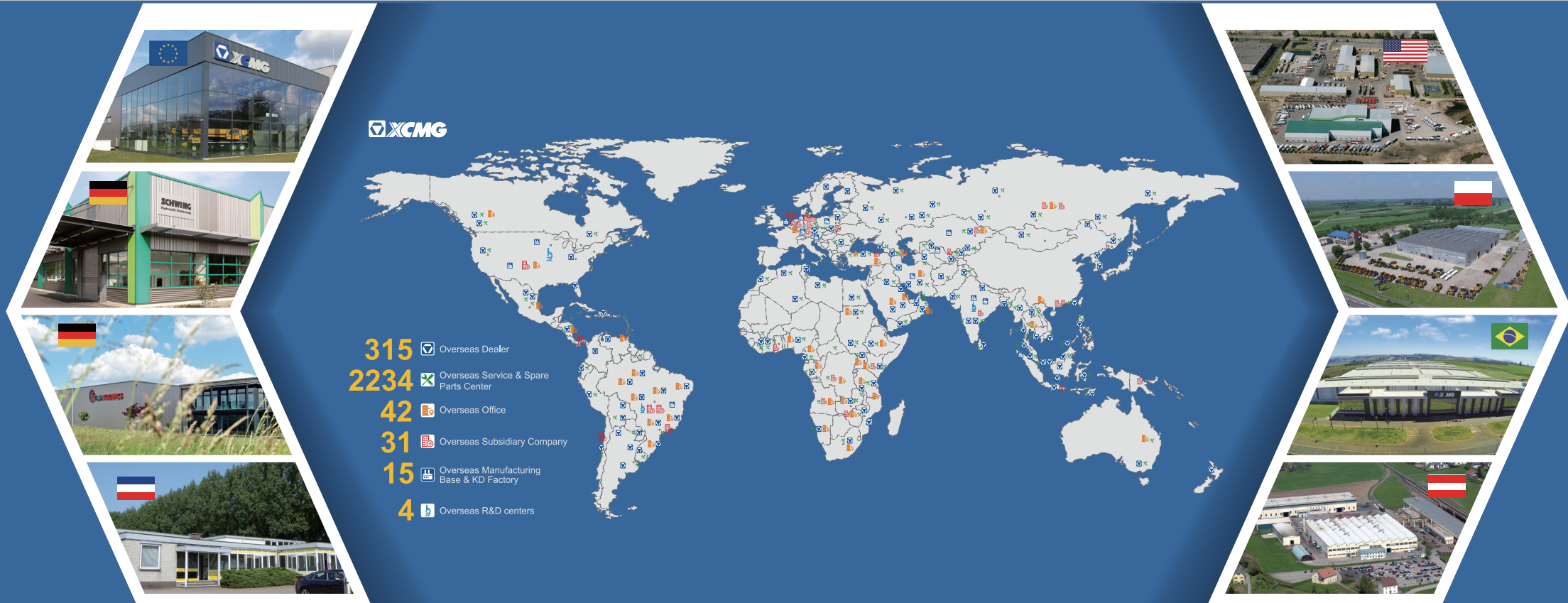
Add: No.1, Tuolanshan Road, Xuzhou Economic Developing Zone, Jiangsu, China 221004
Fax: (+86-516) 87739230
E-mail: export@xcmg.com

XCMG NORTH AMERICA CORPORATION

Add: 5145 Schirlls St. Las Vegas, Nevada 89118
Tel: +1 725 605 2777
Fax: +1 725 605 2888
E-mail: bin@xcmg.com



www.xcmg.com



INTRODUCTION OF XCMG

Founded in 1943, XCMG is the largest enterprise in the Chinese construction machinery industry. We offer the most diverse product line and the highest technological standards. We provide a comprehensive set of construction solutions, and we are the most internationally competitive firm in the industry. On KHL Yellow Table, we rank No. 1 in China and No.3 globally.

Across our offices in China, the US, Germany, India, and Brazil, XCMG has established a global collaborative research platform including national-level R&D facilities focused on advanced smart manufacturing technology. Our R&D team consists of top talents from around the globe. They are researching cutting-edge technologies such as new energy, unmanned driving and high-end parts. Our work has earned us numerous international patents and awards.

XCMG has the most comprehensive product line, meaning we can offer fully comprehensive solutions in 9 areas: hoisting, earthwork, road building & maintenance, mining, concrete & paving, tunnel-building & underground construction, high-altitude firefighting equipment & special-purpose vehicles, railway & bridge construction, sanitation engineering. All these solutions can be customized to suit our customers' needs.

At XCMG, our five-continent sales network gives our products worldwide visibility. We have 300 overseas distributors, over 10 overseas manufacturing bases and KD (Knockdown) factories, and products in more than 180 countries and regions. We supply our global customers with pre-sales, mid-sales and after-sales service, and a convenient, efficient one-stop financing and leasing service. XCMG's total annual exports and overseas income consistently come top of the industry in China.

We care deeply for the welfare of the people. We support numerous charitable causes, and are quick to the scene during disaster relief efforts.

XCMG is all set to become an eternal brand with our feet on the ground and eyes on the horizon. XCMG's ambition leads us forever forwards. XCMG is scaling its Everest, and is determined to reach the top.



OVERVIEW

XC948U are developed by XCMG for North American market integrating advanced design idea. XC948U meets EU Stage V/Tier 4 emission standard , its overall design fits human aesthetic, the rear flip engine hood and side flip cab makes its maintenance more convenient. XC948U are comfortable in operation, fuel-efficient, reliable and durable.

performance and features

High Reliability

Cummins B6.7 Engine, complying with Cummins B6.7 Engine providing power of complex working conditions and providing power of complex working conditions.

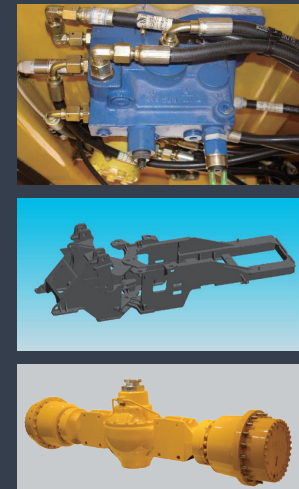
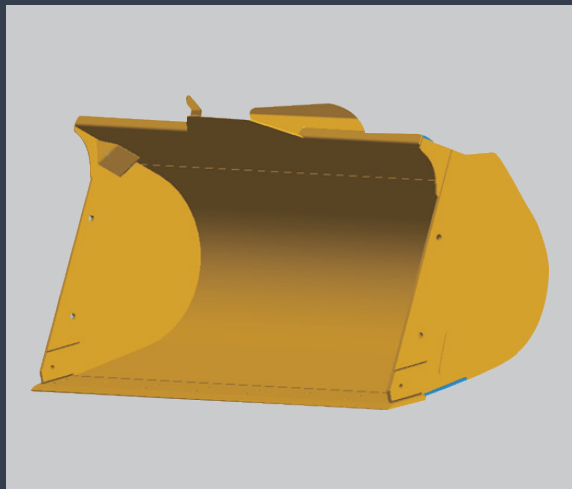
Automatic 4BP 190 torque converter, reduced shifting impact in travelling for various working conditions.

XCMG high performance wet axle, meeting high loaded working requirements.

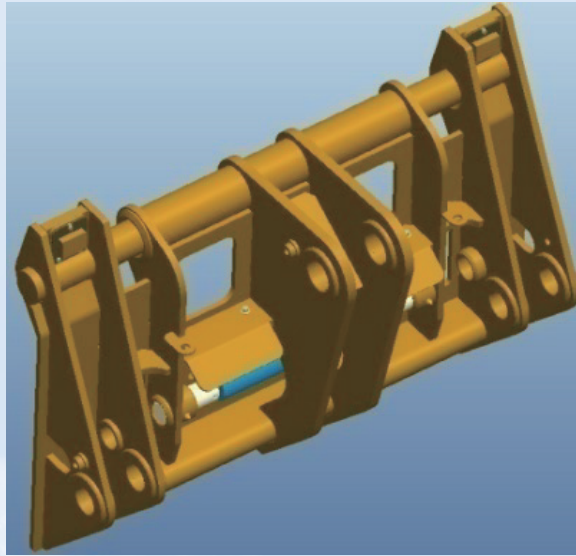
Full hydraulic wet brake system of high reliability and maintenance free.

Extra heavy load frame structure design, FEA analysis on key structural to ensure strong structure and extended machine life.

Wear-resistance and impact-resistance high strength steel plate for bucket material.



High Working Efficiency



Optimized linkage structure and hydraulic system with breakout force up to 140kN.

JRB is the first choice for Quick Coupler in North America.

The coupler controls are conveniently located in the Cab.

Bucket features discharge at high position, auto leveling and lifting limited technologies, reducing working cycle time.

Travel speed up to 36km/h with high transfer efficiency.



Comfort Operation

Spacious and ergonomic cab with excellent visibility.

FOPS/ROPS cab with heat and air conditioning provides good air flow through multiple vents.

The cab is well Sealed and insulated to provide a dust proof environment.

All switches are conveniently placed.

Digital gauges monitor the machine vital functions.

Suspension seat with lumbar support reduce operator fatigue.

Integrated F-N-R electronic lever of shifting function for precise control, easy operation and high working efficiency.

High Safety Performance

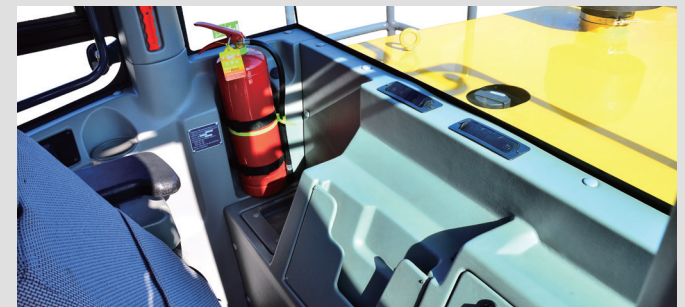
Complying with standards of ISO 5006 operator vision field.

Complying with standards of ISO 3449, ISO 3471, ISO 3164 ROPS/FOPS cabs.

Complying with standard of ISO 2867 , ISO 2860 ladders, passageway, operation platform and exit/ excess.

Flame retardant material applied in cab interiors, extinguisher equipped.

Complying with standards of ISO 10533 、 ISO 10570 lifting arm bracket and hinged lock devices.



Easy Maintenance

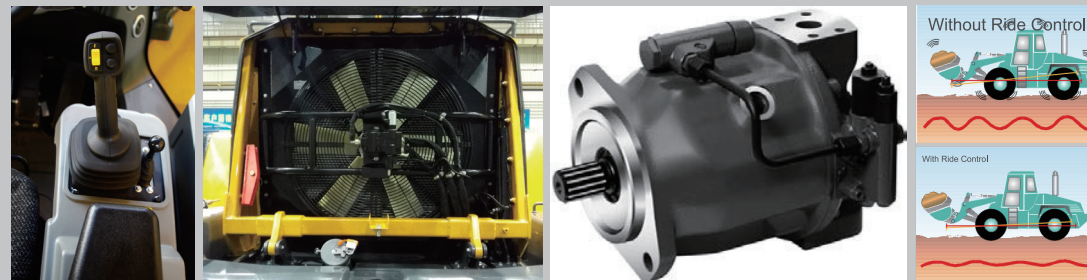
The new digital combination meter, the vehicle running status and various types of information at a glance.

Side-turn cab and large-angle integral side for complete display of all key components for easy maintenance and service.

Single row of large tone radiators, upturned back cover.

Centered electrical fuse box for effortless check up and high reliability.

Remote centered lubrication, drainage pressure testing of daily maintenance.



Energy Saving

Load sense hydraulic system featuring automatic adjusting operation condition, improving fuel efficiency.

Intelligent independent cooling system, fan rotation on request for energy and noise reduction. Separated cooling layout with improved cooling efficiency and fuel efficiency.

Full automatic torque converter, two working mode, enabling the operator match the optimum efficiency according to working requirement.

Pilot control lever integrating F-N-R shifting function minimizing operation motions with higher working efficiency.

Improved traveling performance and load retention.

Technical Specifications

Component weights

| Item | Parameter (Metric) | Parameter (US) |
|---------------------------------|--------------------|----------------|
| Rated bucket capacity | 2.4m³ | 3.15yd³ |
| Rated working load | 4500kg | 9921lb |
| Operating weight | 16500kg | 36376lb |
| Dumping height | 2910mm | 9.55ft |
| Dumping reach | 1120mm | 3.67ft |
| Wheelbase | 3050mm | 10.0ft |
| Track | 1930mm | 6.33ft |
| Minimum ground clearance | 410mm | 1.35ft |
| Overall length | 7705mm | 25.28ft |
| Overall height | 3405mm | 11.17ft |
| Bucket width | 2482mm | 8.14ft |
| Maximum breakout force | 150kN | 33708lbf |
| Maximum traction force | 130kN | 29213lbf |
| Turning radius (Center of Tire) | 5050mm | 16.57ft |
| Boom lifting time | 5s | 5s |
| Total cycle time | 8.9s | 8.9s |

Engine

| XC948U | | |
|-------------------------|--------------------|----------------|
| Item | Parameter (Metric) | Parameter (US) |
| Model | B6.7 | B6.7 |
| Rated power | 149KW | 200HP |
| Declared rotating speed | 2200r/min | 2200r/min |

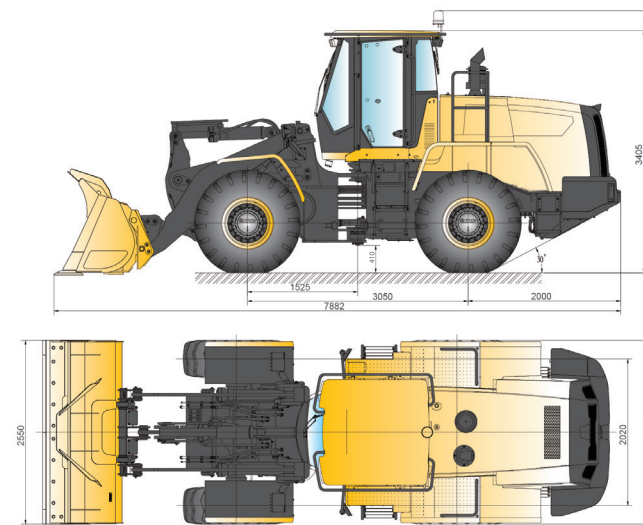
Tyre

| XC948U | | |
|--------|--------------------|----------------|
| Item | Parameter (Metric) | Parameter (US) |
| | 20.5R25 | 20.5R25 |

Drive Speed

| XC948U | | |
|-------------------|--------------------|----------------|
| Item | Parameter (Metric) | Parameter (US) |
| Forward/Reverse 1 | 7km/h | 4.35mile/h |
| Forward/Reverse 2 | 13 km/h | 8.08mile/h |
| Forward/Reverse 3 | 24km/h | 14.91mile/h |
| Forward4 | 38 km/h | 23.61mile/h |

Outline Dimensions



Optional Configurations

XC948U

20.5R25 radial tires

ride control system

emergency steering system

low temperature start system

automatic centered lube system

closed rear fender

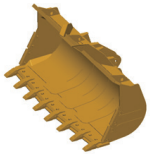
machine protection in landfill

lengthened boom

various buckets (or customized)

several attached tools

Optimum Services , XCMG Guaranteed



XCMG approved attachments



Genuine parts



Financial solutions



Maintenance contract



Telematics



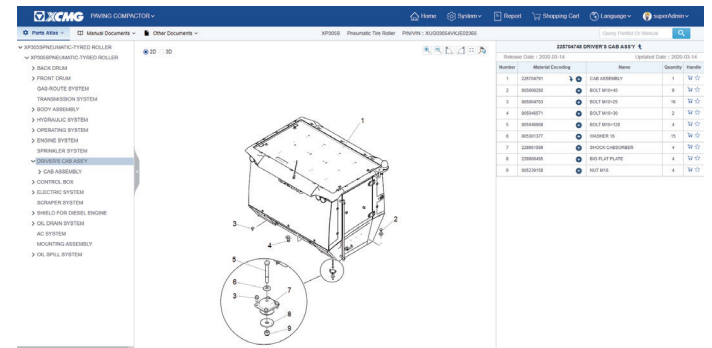
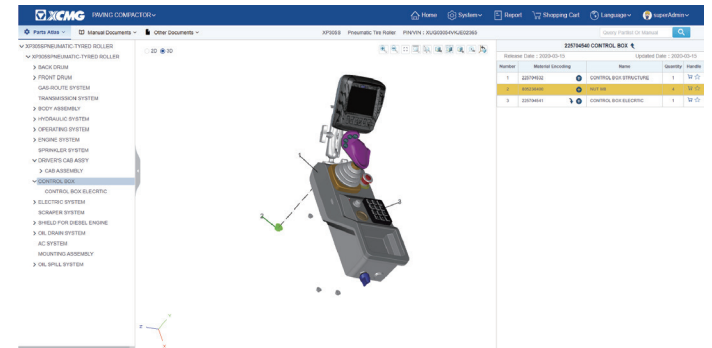
Professional Integrated Complete Solutions

XCMG group has built a strong reputation based on the quality, reliability and durability of its construction machinery. What's more, XCMG has gradually established a service network to constantly provide its local integrated and highly efficient complete solutions for all customers.

Full Range of Services Ready for you

In order to respond to your needs as fast as possible, XCMG experts are on their way to your job site from one of our facilities near you. Full range of services are available in order to reduce your total cost of ownership and increase your revenue.

XCMG Global Spare parts System



Mobile cranes



Excavators



Aerial work platforms



Wheel loaders



Road machinery



XCMG

XCMG FOR YOUR SUCCESS

