

WHEEL LOADER XC938U



XCMG FOR YOUR SUCCESS

EU Stage V/EPA Tier IV

XUZHOU CONSTRUCTION MACHINERY GROUP IMP. & EXP. CO., LTD

Add: No. 1, Tuolanshan Road, Xuzhou Economic Developing Zone, Jiangsu, China 221004
Fax: (+86-516) 87739230
E-mail: export@xcmg.com

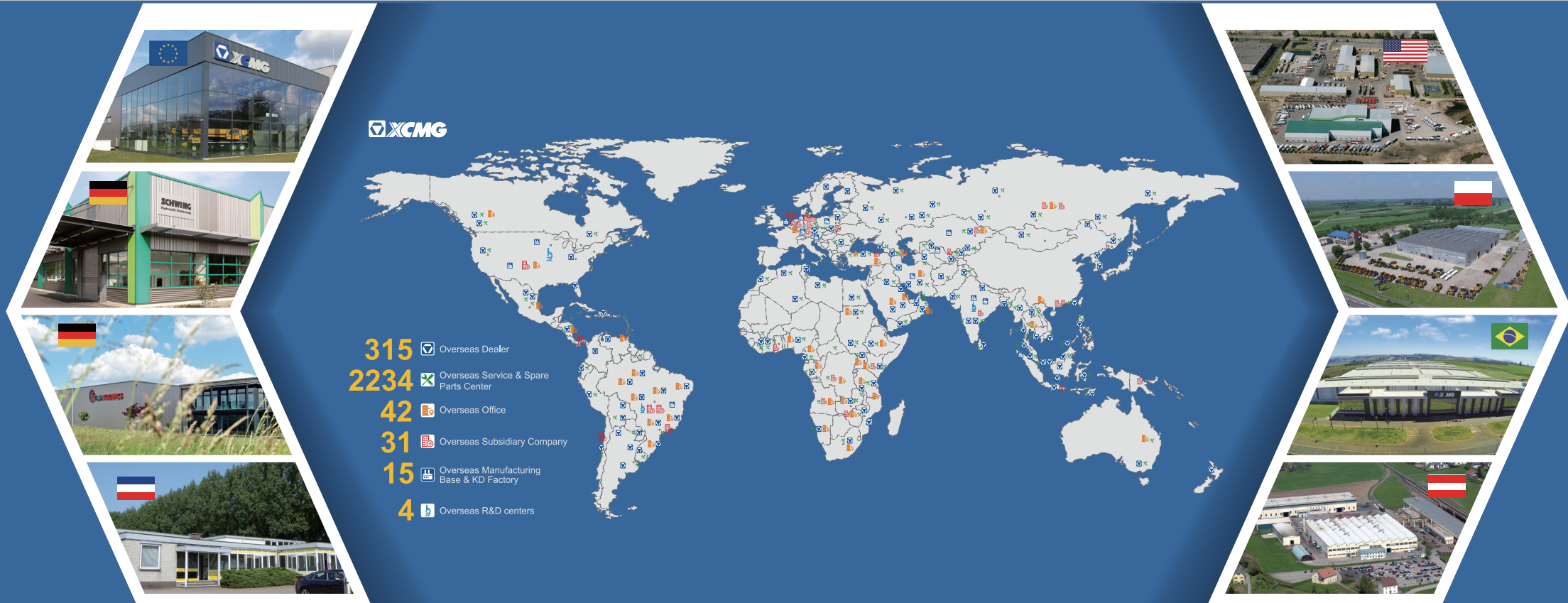
XCMG NORTH AMERICA CORPORATION

Add: 5145 Schirlls St. Las Vegas, Nevada 89118
Tel: +1 725 605 2777
Fax: +1 725 605 2888
E-mail: bin@xcmg.com



www.xcmg.com





INTRODUCTION OF XCMG

Founded in 1943, XCMG is the largest enterprise in the Chinese construction machinery industry. We offer the most diverse product line and the highest technological standards. We provide a comprehensive set of construction solutions, and we are the most internationally competitive firm in the industry. On KHL Yellow Table, we rank No. 1 in China and No.3 globally.

Across our offices in China, the US, Germany, India, and Brazil, XCMG has established a global collaborative research platform including national-level R&D facilities focused on advanced smart manufacturing technology. Our R&D team consists of top talents from around the globe. They are researching cutting-edge technologies such as new energy, unmanned driving and high-end parts. Our work has earned us numerous international patents and awards.

XCMG has the most comprehensive product line, meaning we can offer fully comprehensive solutions in 9 areas: hoisting, earthwork, road building & maintenance, mining, concrete & paving, tunnel-building & underground construction, high-altitude firefighting equipment & special-purpose vehicles, railway & bridge construction, sanitation engineering. All these solutions can be customized to suit our customers' needs.

At XCMG, our five-continent sales network gives our products worldwide visibility. We have 300 overseas distributors, over 10 overseas manufacturing bases and KD (Knockdown) factories, and products in more than 180 countries and regions. We supply our global customers with pre-sales, mid-sales and after-sales service, and a convenient, efficient one-stop financing and leasing service. XCMG's total annual exports and overseas income consistently come top of the industry in China.

We care deeply for the welfare of the people. We support numerous charitable causes, and are quick to the scene during disaster relief efforts.

XCMG is all set to become an eternal brand with our feet on the ground and eyes on the horizon. XCMG's ambition leads us forever forwards. XCMG is scaling its Everest, and is determined to reach the top.



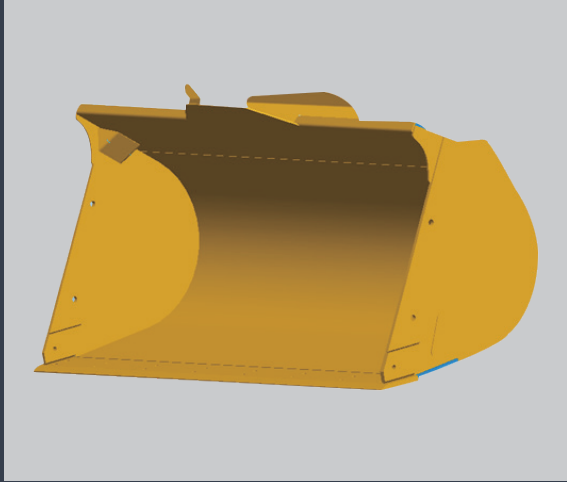
OVERVIEW

XC938U wheel loader is a new generation of loader. XCMG makes full use of Group's international R&D platform to integrate global technology research and development resources to create international advanced and completely independent intellectual property rights. This model is powerful, rugged, energy efficient, safe and comfortable, and easy to maintain. It is the preferred production equipment for various construction projects plants and municipal construction.

XC938U is equipped with EU Stage V/Tier 4 emission engine, ZF 4WG160 automatic transmission, XCMG wet axle, electro-hydraulic proportional load sensitive hydraulic system. The whole machine has significant advantages in terms of reliability, energy saving, high efficiency and comfort, and has reached the international advanced level.



performance and features



High Reliability

Cummins B6.7 Engine, complying with Cummins B6.7 Engine providing power of complex working conditions.

ZF Automatic Power Shift transmission, integrated joystick with FNR, KD and horn.

XCMG wet axle, meeting high loaded working requirements.

Full hydraulic wet brake system of high reliability and maintenance free.

Extra heavy load frame structure design, FEA analysis on key structural to ensure strong structure and extended machine life.

Wear-resistance and impact-resistance high strength steel plate for bucket material.

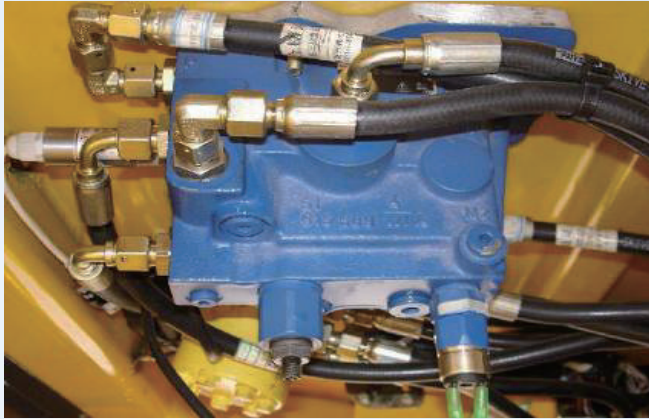


Intelligent

The intelligent heat management system's large radiator + low-speed fan can automatically adjust the speed according to the heat dissipation requirements, so that the whole machine can quickly reach and maintain the best working condition, reduce energy consumption and reduce noise pollution. The fan has an automatic reversal function for self-cleaning in high dust environments.

Electro-hydraulic proportional load sensitive hydraulic system provides on-demand distribution of fuel supply during steering and work unit operation. At the same time, command-based control makes the operator's work easier and more fun.

Electro-hydraulic proportional control system

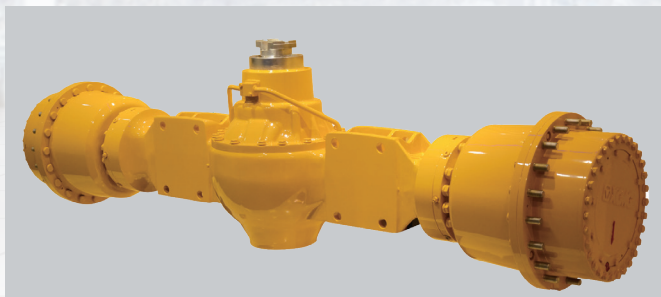
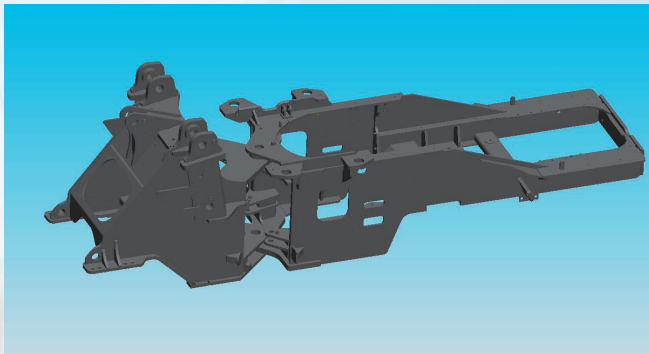


— Buffering function

When the boom is activated, stopped or close to the limit, the action buffer is decelerated to prevent impact and avoid severe vibration.

— Automatic position restriction

Realize the position memory of the boom high position, low position and bucket recovery position, so that the working device automatically moves to the set position automatically.



— Jog

Raise and lower the boom to achieve high precision jog control without affecting the maximum speed.

— Level and lift

Most machines have this function, like forklift. With this function, the machine may maintain its horizontal attitude when it completes its lifting and descending operation.

— Automatic leveling

automatic reset and leveling of the working device after unloading



Comfort Operation

Spacious and ergonomic cab with excellent visibility.

FOPS/ROPS cab with heat and air conditioning provides good air flow through multiple vents.

The cab is well Sealed and insulated to provide a dust proof environment.

All switches are conveniently placed.

Digital gauges monitor the machine vital functions.

Suspension seat with lumbar support reduce operator fatigue.

Integrated F-N-R electronic lever of shifting function for precise control, easy operation and high working efficiency.

High Safety Performance

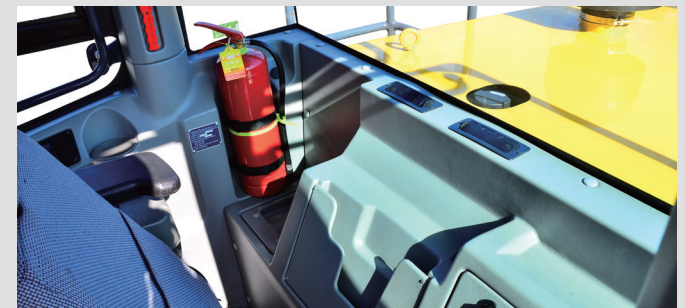
Complying with standards of ISO 5006 operator vision field.

Complying with standards of ISO 3449, ISO 3471, ISO 3164 ROPS/FOPS cabs.

Complying with standard of ISO 2867 , ISO 2860 ladders, passageway, operation platform and exit/ excess.

Flame retardant material applied in cab interiors, extinguisher equipped.

Complying with standards of ISO 10533 、 ISO 10570 lifting arm bracket and hinged lock devices.



Easy Maintenance

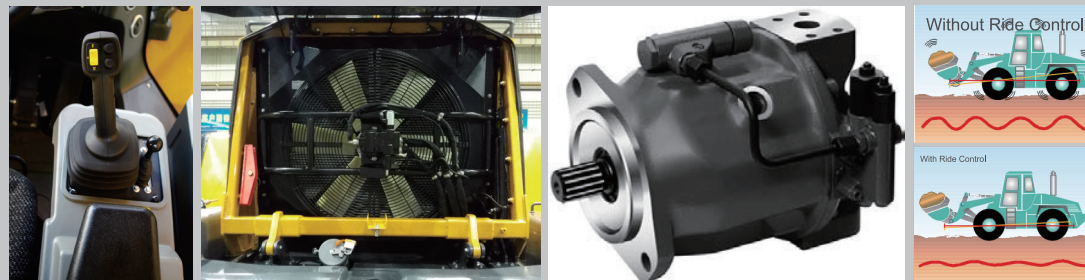
The new digital combination meter, the vehicle running status and various types of information at a glance.

Side-turn cab and large-angle integral side for complete display of all key components for easy maintenance and service.

Single row of large tone radiators, upturned back cover.

Centered electrical fuse box for effortless check up and high reliability.

Remote centered lubrication, drainage pressure testing of daily maintenance.



Energy Saving

Load sense hydraulic system featuring automatic adjusting operation condition, improving fuel efficiency.

Intelligent independent cooling system, fan rotation on request for energy and noise reduction. Separated cooling layout with improved cooling efficiency and fuel efficiency.

Full automatic torque converter, two working mode, enabling the operator match the optimum efficiency according to working requirement.

Electronic lever integrating F-N-R shifting function minimizing operation motions with higher working efficiency.

Improved traveling performance and load retention.

Technical Specifications

Component weights

Program	Parameter (Metric)	Parameter (US)
Rated bucket capacity	1.9/m³	2.49yd³
Rated working load	3500kg	7716lb
Operating weight	13500kg	29762lb
Dumping height	2910mm	9.55ft
Dumping reach	1120mm	3.67ft
Wheelbase	3000mm	9.84ft
Track	1930mm	6.33ft
Minimum ground clearance	410mm	1.35ft
Overall length	7705mm	25.28ft
Overall height	3405mm	11.17ft
Bucket width	2482mm	8.14ft
Maximum breakout force	130kN	29213lbf
Maximum traction force	95kN	21348lbf
Turning radius (Center of Tire)	5050mm	16.57ft
Boom lifting time	5s	5s
Total cycle time	8.9s	8.9s

Engine

XC938U

Program	Parameter (Metric)	Parameter (US)
Model	B6.7	B6.7
Rated power	99kW	133HP
Declared rotating speed	2200r/min	2200r/min

Tyre

XC938U

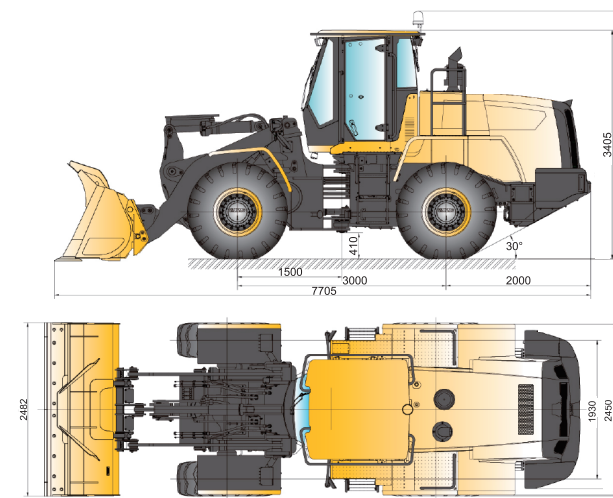
Program	Parameter (Metric)	Parameter (US)
	20.5R25	20.5R25

Drive Speed

XC938U

Program	Parameter (Metric)	Parameter (US)
Forward/Reverse 1	8 km/h	4.97mile/h
Forward/Reverse 2	15 km/h	9.32mile/h
Forward/Reverse 3	27 km/h	16.78mile/h
Forward4	40 km/h	24.85 mile/h

Outline Dimensions



Optional Configurations

XC938U

20.5R25 radial tires

ride control system

emergency steering system

low temperature start system

automatic centered lube system

closed rear fender

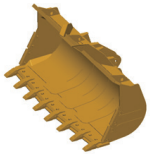
machine protection in landfill

lengthened boom

various buckets (or customized)

several attached tools

Optimum Services , XCMG Guaranteed



XCMG approved attachments



Genuine parts



Financial solutions



Maintenance contract



Telematics



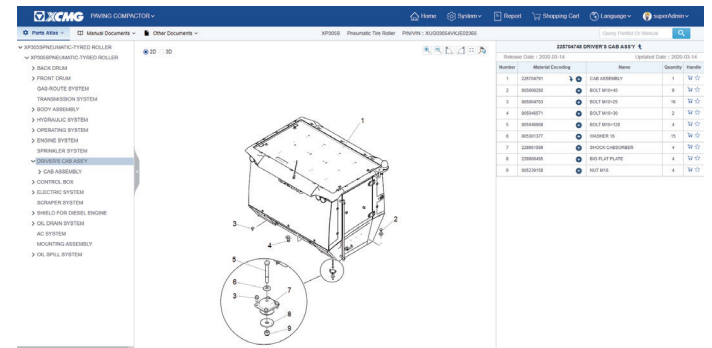
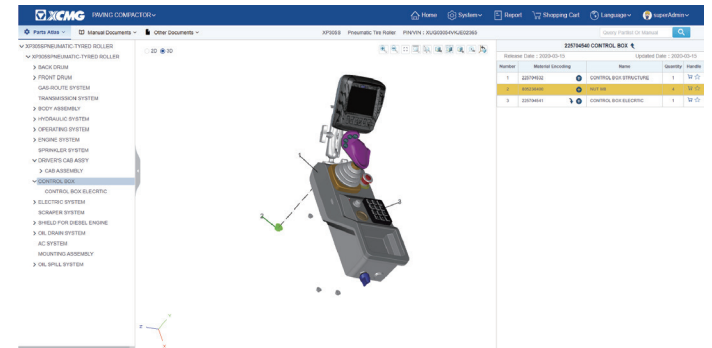
Professional Integrated Complete Solutions

XCMG group has built a strong reputation based on the quality, reliability and durability of its construction machinery. What's more, XCMG has gradually established a service network to constantly provide its local integrated and highly efficient complete solutions for all customers.

Full Range of Services Ready for you

In order to respond to your needs as fast as possible, XCMG experts are on their way to your job site from one of our facilities near you. Full range of services are available in order to reduce your total cost of ownership and increase your revenue.

XCMG Global Spare parts System



Mobile cranes



Excavators



Aerial work platforms



Wheel loaders



Road machinery



XCMG

XCMG FOR YOUR SUCCESS

