



Accurate load
information to optimize
your business

NED

NATIONAL EQUIPMENT DEALERS

Authorized Loadscan Dealer

LOADSCAN[®]
accurate payload measurement

Pay only for what you receive, ensure accurate sold volumes, and optimize truck loading to increase profits.

Loadscan's Payload Measurement Solutions are satisfying growing global demand for reliable and accurate load measurement across the bark, mulch and compost industries.

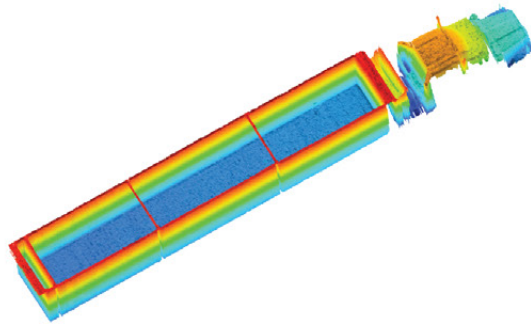
What is load volume scanning?

The LVS system gives you the ability to accurately determine and apply your own compaction and bulking factors, so you measure actual volume, not a converted weight estimate.

By accurately measuring volumes purchased and sold, you ensure that you aren't paying for material you haven't received. Conversely, you ensure you don't oversupply material due to inaccurate measurement.

A 3D scan image of every load is generated, providing an audit trail and visual record of loading. Customers have found this extremely helpful for monitoring staff performance and improving loading practices.

How the LVS system works



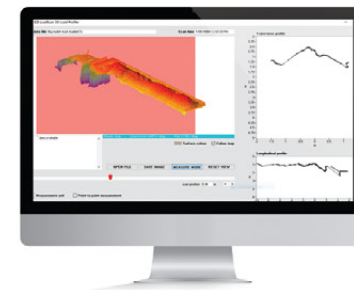
Empty truck is scanned to create reference scan in the database



Trucks can be tracked manually or fitted with RFID tags for automatic identification



Trucks are scanned by driving below an elevated scan head, which can be mounted on a portable or fixed pole or can be fitted to a trailer. The scanning process is fully automated



Proprietary Loadscan software reports volumetric measurement, including 3D load profiles of every load



Green, together

The Loadscan LVS is an environmentally-responsible technology. It consumes no fossil fuels, and outputs no harmful chemicals. The LVS optimizes truck loading. Optimally loaded trucks are a more efficient use of assets, requiring less trips to shift the same amount of material. As a result, less fuel is consumed with less exhaust emissions. Loadscan technology is helping our customers to reduce their carbon footprint and lessen the impact on the environment.

A typical load volume scanning system



System visual is indicative only and not to scale. Final system specification may vary.

A range of convenient scanner system options

Loadscan offers a range of scanner options to suit your specific site requirements.



Block Mounted Fixed LVS-3BMF

- 👁 For permanent locations
- 👁 Hardwired to office for weather-protected access
- 👁 Mains power for 'always-on' operation



Block Mounted Portable LVS-3BMP

- 👁 For long-term installations or fixed locations
- 👁 Built in kiosk option
- 👁 Portable (fork-slots and lifting points provided)



Trailer Mounted Mobile LVS-3TMM (hydraulic option)

- 👁 For short-term projects or multiple locations
- 👁 Self-contained and towable
- 👁 Several power options — mains, generator or solar
- 👁 Suitable for hire or lease
- 👁 Optional hydraulic lifting mechanism

All systems include RFID tag reader, ticket printer, LVS measurement software and Overview reporting software. Trailer shown is USA model.



Only pay for the material you receive

Because you purchase material in cubic volume, you need a reliable and accurate method of checking that the actual volume of material you're receiving is correct, not a supplier estimate.

Common methods of determining truck load volumes, such as counting loader buckets or truckloads, or converting from weight are inaccurate. Survey quantities don't account for compaction factors in material loaded into a truck from a stockpile, nor bulking of the material when it's unloaded. With a Loadscan LVS system you'll end supply disputes, which can be frustrating, time consuming and expensive.

Volumetric laser scanning is the only accurate and consistent load measurement method.

Oversupply can cost bulk material suppliers a fortune

If you're unknowingly oversupplying because you're unable to measure loose material accurately, you'll be doing your bottom line no favors.

The LVS system reports the actual loose volume of the load as it sits in the truck at the time of measurement, regardless of how it was loaded or how heavy or wet the material is. Improved load measurement and inventory monitoring means you won't run the risk of huge product write-offs come stocktake.

“

Buyers and sellers alike struggled to find a consistent method for loading trucks that was fair to everyone. Loadscan has solved all that.”

Dave Boyce — Midwest Trading Horticultural Supplies Inc, USA

Inaccurate compaction and bulking factors can reduce profits

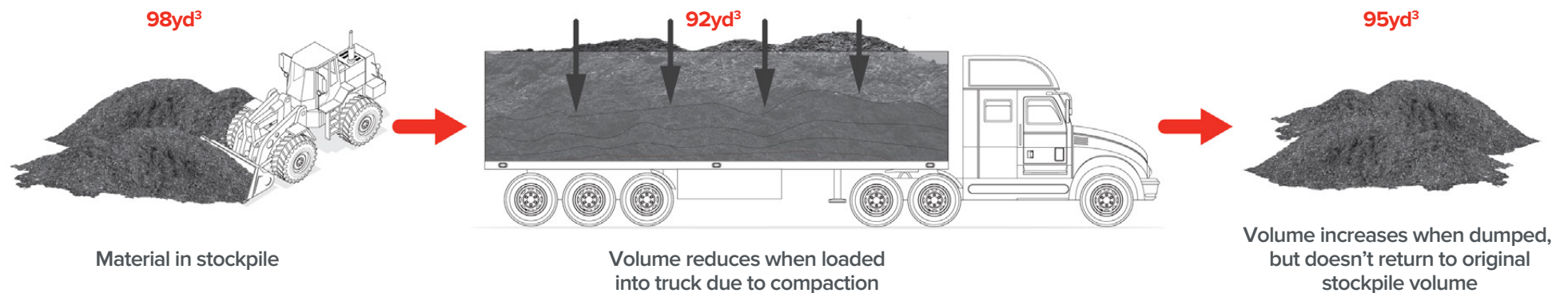
Every supplier and manufacturer has a somewhat unique situation, where material is affected to different degrees by factors such as moisture, size of the pile, how long the pile has been settled, and type of material. Using common bulking and compaction factors provide generic estimates only, and don't necessarily reflect the actual state of your material.

Incorrectly estimated or misunderstood factors can significantly reduce profits due to material measurement inaccuracies on incoming and outgoing loads. One cubic yard in the stockpile does not translate into one cubic yard in the truck, nor one cubic yard when dumped.

Material from the stockpile tends to compact when loaded into a truck bin. When the material is unloaded at the destination it tends to bulk up, but usually not the same volume that was extracted from the original stockpile. This makes accurate loose measurement challenging.

Without accurate factors to determine the true volume of loose material in a truck bin you could be paying for material you haven't actually received, or you could be oversupplying your customers. The Loadscan LVS gives you the ability to accurately determine and apply your own compaction and bulking factors of each of the materials you receive and supply, making it the only reliably accurate method of measuring volumes.

A typical example of how compaction and bulking changes the volume of material



Automatic scanning of every truck load with the LVS provides an accurate picture of exactly how much material has been supplied or delivered.

Using the system-generated load data you can uncover your exact compaction and bulking factors. No more guesswork or stock write-offs.

Volume scanning delivers extensive benefits for bark, mulch and compost suppliers

- ① Ensure you only pay for the material you receive
- ① Don't pay for water content in incoming material
- ① Determine accurate product densities by combining measured volume and weight data, not estimates based on inaccurate conversion factors
- ① Accurate sold volumes improves customer satisfaction and retention, and eliminates oversupply
- ① Proven accurate to +/- 1% (Certified for Trade in NZ and Australia)
- ① Eliminate disputes or withheld payments over volumes
- ① Optimize truck loading for maximum asset utilization and profitability
- ① Easily access historical period reporting for invoicing, stock reconciliation and performance analysis
- ① No significant maintenance costs or recalibration required



Accuracy starts at
the laser scan
head



The scan engine is the heart of our volume scanning systems. Using safe Lidar technology, the range finder lasers in our LVS systems are the highest specification available, and the only lasers on the market that have passed the stringent metrological and accuracy testing required for trade approval*.

Accurate scanning alone doesn't guarantee accurate data!

Only when you combine it with our proprietary algorithms do you get reliably accurate measurement data that enables you to make confident business decisions.





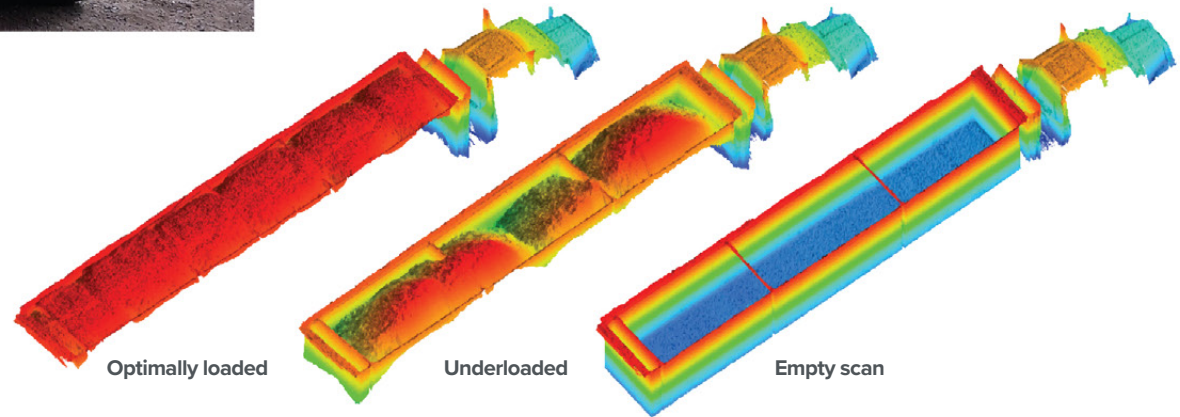
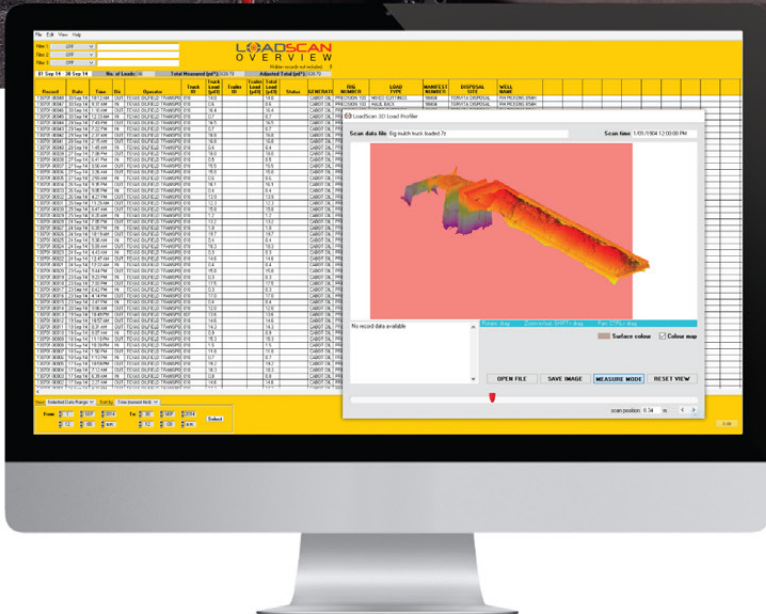
OVERVIEW™

Information for complete control

Every load record is stored in the system and connected to your desktop by LAN, WiFi or Cellular network. Data is viewed and sorted using our proprietary reporting software Overview and can be exported to Microsoft Excel, or imported to existing business systems.

Live data for optimized production

- Accurate measurable information you can trust
- Real-time production data for informed decision-making
- Analyze load compaction and in-transit settlement
- Eliminate disagreements or withheld payments over quantities supplied



Use automatically generated 3D scan images of loaded trucks to educate loader operators to consistently load trucks to capacity



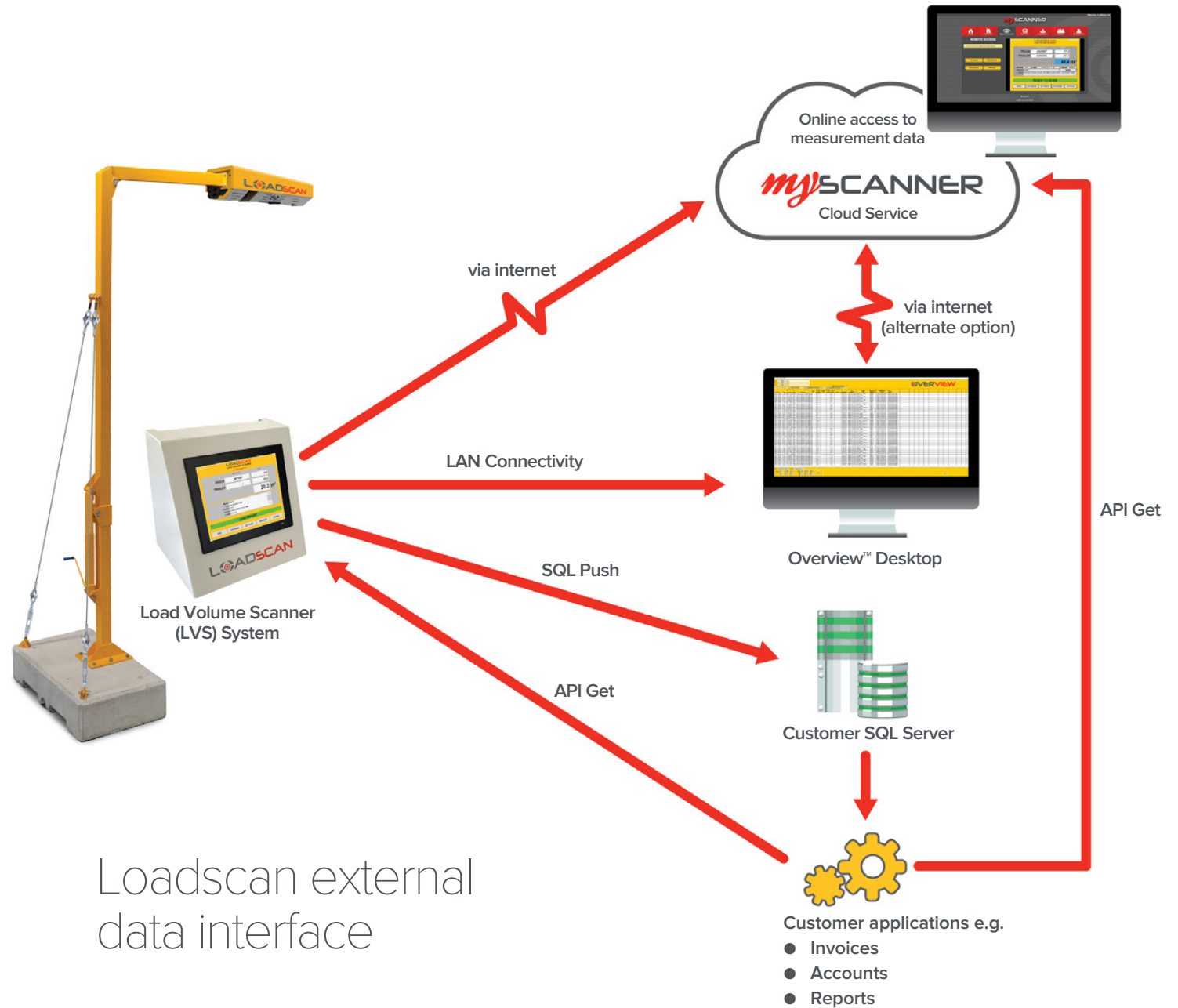
GLOBAL
support via
phone or email



SECURE
customer web portal
(annual subscription)



REMOTE
online access to
scanner & load data



Loadscan external
data interface

We're obsessed with accuracy!

Our business is about improving the profitability of our global customers across the civil, mining, bark and mulch industries.

Over 20 years ago we invented and patented the original load volume scanner, and since then we've been the market leader in providing certified accurate and reliable load information. In fact, we are the only volumetric scanning manufacturer with internationally recognized Weights and Measurement Certifications. It ensures that when we measure your load you can be confident it's absolutely accurate to +/-1%.

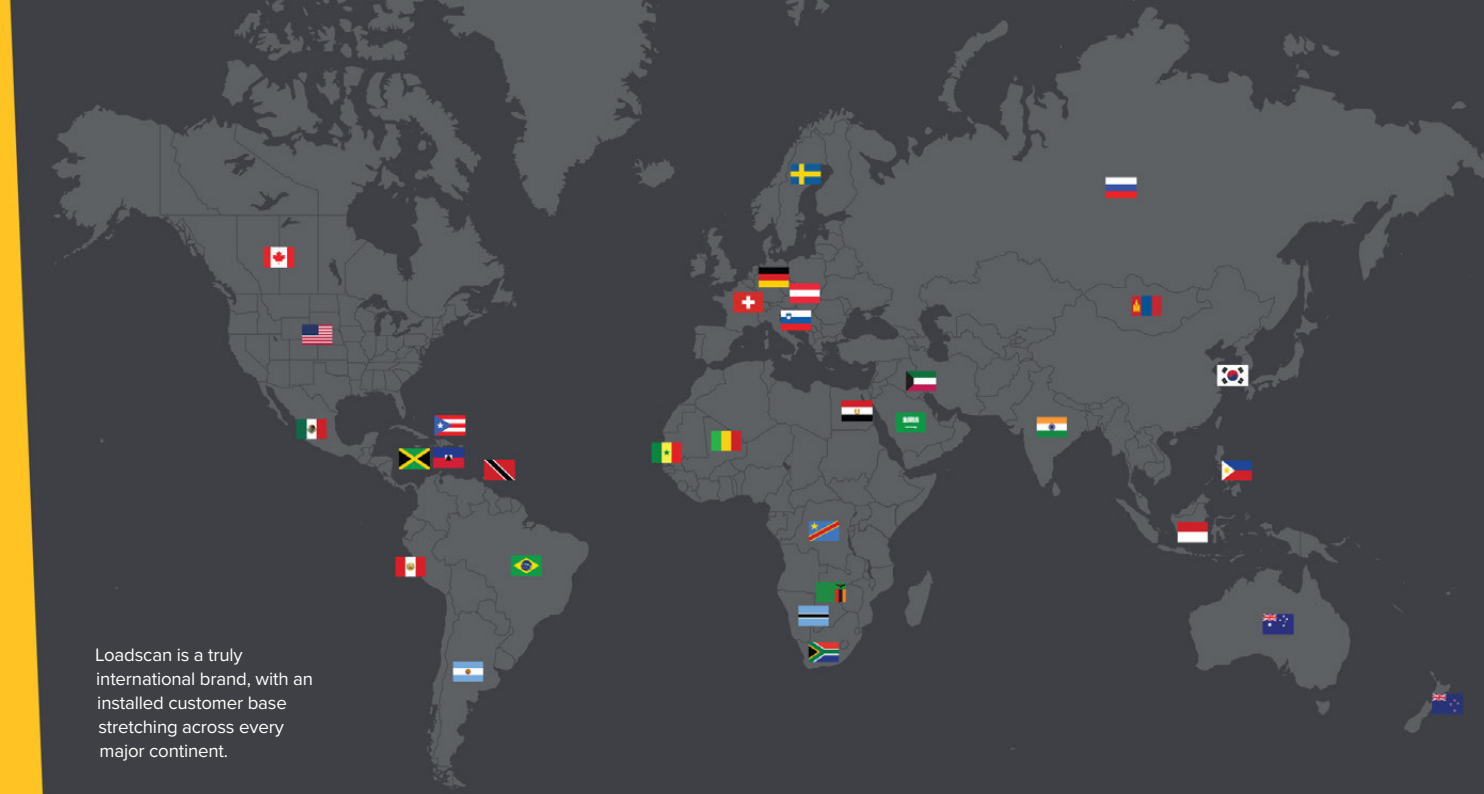
It's your guarantee of peace of mind.

Our advanced volume scanning and measurement systems provide the detailed insights necessary for you to optimize your production loading and throughput. Loadscan technology is enabling substantially improved operational and financial performance for forward-thinking companies across the world.

We've sold our systems globally into over 30 countries, and that's growing fast!

If you have loads to be measured, no matter where you are, you can rely on Loadscan. **Because no-one does it more accurately than us.**

Contact us today to find out how we can transform your operational performance.



Loadscan is a truly international brand, with an installed customer base stretching across every major continent.



In 2020 Loadscan invested in a new purpose-built head office and assembly facility in Hamilton, New Zealand.



nedealers.com

NED CAROLINAS

Lexington, NC | Charlotte, NC | Clayton-Raleigh, NC | Grimesland, NC | Columbia, SC
Wellford-Spartanburg, SC | Conway-Myrtle Beach, SC | Summerville-Charleston, SC

NED FLORIDA

Apopka-Orlando, FL | Tampa, FL | Fort Pierce, FL

NED GEORGIA

Atlanta, GA | Richmond Hill-Savannah, GA

NED TEXAS

Houston, TX | Dallas, TX

LOADSCAN[®]
accurate payload measurement
loadscan.com



"Loadscan" is the only company worldwide to have achieved trade certification approval for truck volume measurements with a load volume scanning system. Our LVS system performs to the same accuracy as per Trade Approval Certificate 1556 (MAPPS NZ) and pattern approval Certificate 13/1/15 (NMI AUS). Loadscan systems are sold as 'monitor only' outside New Zealand and Australia but still perform to the same high tested accuracies.