

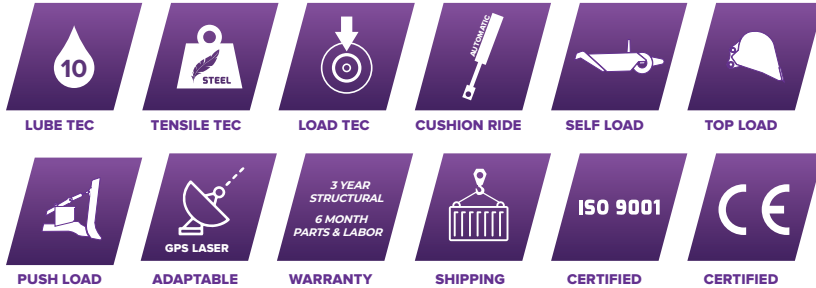


K-TEC 1237 ADT TRAIN

Using a single power unit and one operator, the K-Tec 1237ADT Train doubles up efficiency by pulling two 1237 scrapers. On job sites with longer cut-zone and haul road areas, a massive advantage is gained to provide a tandem heaped capacity of 74 cubic yards / 56.6 cubic metres. The 1237ADT Train provides impressive production performance at the end of the day. This configuration has an added advantage since it can split into singles on your job site as conditions change.



K-TEC 1237 ADT TRAIN SCRAPER FEATURES



1237 ADT TRAIN SPECIFICATIONS

General Specifications	Standard	Metric
Heaped Capacity (ISO)	74 Cubic Yards	56.57 Cubic Metres
Struck Capacity	40.5 Cubic Yards	30.9 Cubic Metres
Max Loading Rating	176,000 lbs	79,832 kgs
Bucket Dimensions	12' W x 4' 3" H x 12' 10" L	3.66m W x 1.29m H x 3.91m L
Cutting Width	12'	3.66m
Cutting Edge	3-Piece Blade	3-Piece Blade
Gate Opening	6' 8"	2.03m
Turning Radius	33'	10m
Gate Cylinders	5" x 26"	127mm x 660mm
Lift Cylinders	5.5" x 32"	140mm x 813mm
Ejector Cylinder	5.5" x 76"	140mm x 1,930mm
Cutting Edge Clearance	28"	0.71m
Ball to Rear Axle Length	28' 9"	8.77m
Rack Height (Tilttable)	4'	1.22m
Weight Distribution	30% Hitch, 70% Scraper Axle	30% Hitch, 70% Scraper Axle
8 Tires	26.5 R25 Radial	26.5 R25 Radial
Horsepower Required	450 HP +	330 kW +
Wrap Around Mud Scrapers	Standard	Standard
Gate Extension	Standard	Standard
Lead Scraper Structural Package	Tie Rods, Tail Hitch, Rack Ext.	Tie Rods, Tail Hitch, Rack Ext.
Truck Fender & Catwalk System	Standard	Standard
Transport Dimensions	Standard	Metric
Overall Width	14'	4.27m
Overall Height	11' 1", 10'	3.4m, 3.04m
Overall Length	36' 6", 36' 6"	11.13m, 11.13m
Shipping Weight	41,570 lbs, 39,130 lbs	18,855 kgs, 17,749 kgs
Overseas Shipping	40' Highcube Container (2)	40' Highcube Container (2)
Optional Upgrades		
Brake System	4 or 8 Caliper Disc System	
Height Gauge	Increases cutting depth visibility	
Mine Version	Heavier plate steel for mining applications	

Specifications are subject to change without notice.



Topsoil • Tennessee, USA



Topsoil • Canada

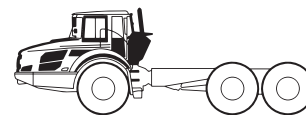


Clay • California, USA



Topsoil • Tennessee, USA

RECOMMENDED POWER UNIT



450HP +/330 KW +
Articulated Dump Truck