

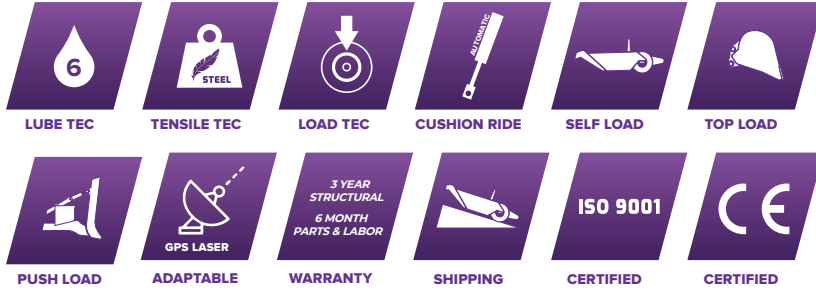


K-TEC 1228 TRAIN

The K-Tec 1228 Train doubles efficiency by pulling two solid-welded, rigid-frame 1228 scrapers with a single power unit and one operator. On job sites with a longer cut zone in sandy soil, a massive advantage is gained to provide a tandem heaped capacity of 56 cubic yards / 42.8 cubic metres. The 1228 Train provides a pair of fast-loading, light-weight earthmovers. This configuration has an added advantage since it can split into singles on your job site as conditions change.



K-TEC 1228 TRAIN SCRAPER FEATURES



1228 SPECIFICATIONS

General Specifications	Standard	Metric
Heaped Capacity (ISO)	56 Cubic Yards	42.8 Cubic Metres
Struck Capacity	37 Cubic Yards	28.2 Cubic Metres
Max Loading Rating	136,000 lb	61,688 kg
Bucket Dimensions	12' W x 4' H x 11' L	3.66m W x 1.22m H x 3.35m L
Cutting Width	12'	3.66m
Cutting Edge	3-Piece Blade	3-Piece Blade
Gate Opening	6' 6"	1.98m
Turning Radius	26'	7.92m
Gate Cylinders	4.5" x 26.5"	114mm x 673mm
Lift Cylinders	5.5" x 32"	140mm x 813mm
Ejector Cylinder	5.5" x 76"	140mm x 1,930mm
Cutting Edge Clearance	28"	0.71m
Hitch Pin to Rear Axle Length	30'	8.38m
Rack Height (Tilttable)	3'	0.91m
Weight Distribution	Tongue: 24%, Wheels: 76%	Tongue: 24%, Wheels: 76%
4 Tires	23.5 R25 Radial	23.5 R25 Radial
Horsepower Required	300HP +	220 kW +
Wrap Around Mud Scrapers	Standard	Standard

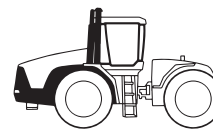


Transport Dimensions	Standard	Metric
Overall Width	14'	4.27m
Overall Height	8' 10"	2.68m
Overall Length	36' 7", 34' 11"	11.15 m, 10.64 m
Shipping Weight	35,900 lb, 36,520 lb	16,283 kg / 16,565 kg
Overseas Shipping	Roll-on Roll-off	Roll-on Roll-off

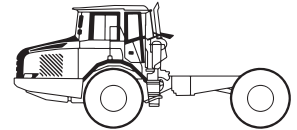
Optional Upgrades	
Radial Tires (4)	1000/50 R25, 1050/50 R32 (2)
Brake System	4 Caliper Disc System
Trash Rack	Standard on lead Scraper

Specifications are subject to change without notice.

RECOMMENDED POWER UNIT



Agricultural Tractor
450HP +/331 KW +



Construction Tractor
450HP +/331 KW +