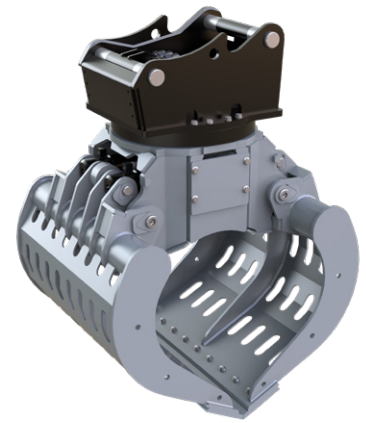


# Demolition & Sorting Grabs incl. Integrated Adapter

# D20H-P to D37H-P

Robust multi purpose grabs with integrated quick change adapter system Oilquick for excavators from 14t / 30800 lbs to 37t / 81400 lbs operating weight. Well-suited for the demolition and separation of all kinds of building materials and waste.

- ▷ **Robust, fully integrated rotation** with sturdy slewing ring to withstand external forces, with connecting hoses located inside the hub. **Integrated pressure relief valve** to avoid peak-pressures.
- ▷ **Oilquick quick change adapter integrated, providing a low height.**
- ▷ **Exceptional closing forces** provided by two horizontal hydraulic cylinders which are well protected by the carrier.
- ▷ The **end position (grab open)** is **hydraulically cushioned** to avoid damage to the cylinder when the grab is pushed into the material.
- ▷ The grabs feature **perforated shells** to let fine dust and debris through without larger pieces getting caught. The **durable, replaceable and indexable wear blades** (500HB) enable the grabs to pinch with their edges without excessive wear.



D20H-P-OQ65

### Grab with integrated Quick Change Adapter D20H-P-OQ to D37H-P-OQ

Type	Width E (mm/in)	Opening A (mm/in)	Height C max. (mm/in)	Height C min. (mm/in)	Volume (liter/c.y.)	Weight (kg/lbs)	Load capacity (kg/lbs)	Closing force (kN/lbf)	Operating weight (t/lbs)
D20H-P-OQ65	1000/39.4	1890/ 74.4	-	1320/ 52.0	450/ 0.59	1060/ 2332	5000/ 11000	43/ 9460	14-20/ 30800-44000
D24H-P-OQ65	1000/39.4	2005/ 79.9	-	1350/ 52.0	650/ 0.85	1120/ 2464	5000/ 11000	42/ 9240	18-24/ 39600-52800
D27H-P-OQ70/55	1150/45.3	2140/ 84.3	1700/ 66.9	1500/ 59.1	800/ 1.05	1500/ 3300	6000/ 13200	63/ 13860	20-27/ 44000-59400
D32H-P-OQ70/55	1200/47.2	2200/ 86.6	1710/ 67.3	1580/ 62.2	900/ 1.18	1960/ 4312	8000/ 17600	89/ 19580	27-32/ 59400-70400
D32H-P-OQ80	1200/47.2	2200/ 86.6	1750/ 68.9	1620/ 63.8	900/ 1.18	2000/ 4400	8000/ 17600	89/ 19580	27-32/ 59400-70400
D37H-P-OQ80	1250/49.2	2260/ 86.6	1750/ 68.9	1610/ 63.4	950/ 1.24	2100/ 4620	8000/ 17600	86/ 18920	32-37/ 70400-81400

**Package consists of:** demolition and sorting grab, integrated rotation with adapter for Oilquick, wear blades and non-return valve

**Other sizes on request**

### Requirements of carrier machine

<b>Operating pressure (open/close):</b>	<b>D20/D24/D27: max. 32 MPa (320 bar/4640psi); D32/D37: max. 35 MPa (350 bar/ 5070psi)</b>
<b>Pump capacity (open/close):</b>	75 - max. 150 l/min / 20 - max. 40GPM
<b>Operating pressure (rotate):</b>	<b>max. 14 MPa (140 bar/2030psi)</b>
<b>Pump capacity (rotate):</b>	max. 50 l/min / 13GMP

### Technical drawings

