

SPECIFICATIONS

HX180A L

Powered By Cummins Performance Series Engine

Net Power
152 HP (113 kW) / 2,200 rpm

Standard Bucket
.73 m³ / .95 yd³

Operating Weight
43,000 LBS (19,505 kg)



| ENGINE | |
|----------------------------|--|
| Maker / Model | Cummins B4.5 |
| Type | Tier 4F/ Stage V Emission Certified, 4 cylinder diesel engine with No Manual Regeneration. |
| Rated flywheel horse power | J1995 (gross) 115 kW (155 HP) at 2,200 rpm |
| SAE | J1349 (net) 113 kW (152 HP) at 2,200 rpm |
| Max. torque | 115 kW (155 hp) at 2,000 rpm |
| Peak Torque | 712 N·m (525 lb-ft) at 1,200 rpm |
| Displacement | 4.5 ℓ (275 cu in) |

| HYDRAULIC SYSTEM | |
|------------------|--|
| MAIN PUMP | |
| Type | Variable displacement tandem axis piston pumps |
| Max. Flow | 2 × 160 lpm (42.3 U.S. gpm) |

| AUXILIARY PRESSURE | | |
|--------------------|----------------|---------------------------------|
| 2 Way | Flow (l/min) | 13~85 gpm / (50~320 lpm) |
| | Pressure (bar) | 1,450~5,076 psi / (100~350 bar) |
| Rotating | Flow (l/min) | 11 gpm / (39.9 lpm) |
| | Pressure (bar) | 2,321 psi / (160 bar) |

| PILOT PUMP | |
|------------|---|
| Type | Fixed displacement gear pump single stage |
| Max. Flow | 29 ℓ /min (7.7 U.S. gpm) |

| HYDRAULIC MOTORS | |
|------------------|--|
| Travel | Variable displacement axial piston motor |
| Swing | Fixed displacement axial piston motor |

| RELIEF VALVE SETTING | |
|-----------------------------------|-------------------------------------|
| Implement Circuits | 350 kgf/cm ² (4,980 psi) |
| Travel | 350 kgf/cm ² (4,980 psi) |
| Power Boost (Boom, Arm, Bucket) | 380 kgf/cm ² (5,410 psi) |
| Swing Circuit | 285 kgf/cm ² (4,060 psi) |
| Pilot Circuit | 40 kgf/cm ² (569 psi) |
| Service Valve | Installed |

* Hyundai Bio Hydraulic Oil (HBHO) available.

| DRIVES & BRAKES | |
|--------------------------------|---|
| Drive Method | Fully hydrostatic type |
| Drive Motor | Axial piston motor, in-shoe design |
| Reduction System | Planetary reduction gear |
| Max. Drawbar Pull | 16,700 kgf (36,820 lbf) |
| Max. Travel Speed (High / Low) | 3.1 km/hr (1.9 mph) / 5.4 km/hr (3.4 mph) |
| Gradeability | 35° (70%) |
| Parking Brake | Multi wet disc |

| CONTROL | |
|---|--|
| Pilot pressure operated joysticks and pedals with detachable lever provide almost effortless and fatigueless operation. | |
| Pilot Control | Two joysticks with one safety lever (LH) : Swing and arm, (RH) : Boom and bucket |
| Traveling and Steering | Two levers with pedals |
| Engine Throttle | Electric, dial type |

OPERATING WEIGHT (APPROXIMATE)

Operating weight, including 5.1 m (16' 9") boom, 2.6 m (8' 6") arm, SAE heaped 0.73 m³(0.95 yd³) bucket, lubricant, coolant, full fuel tank, full hydraulic tank, and all standard equipments.

| OPERATING WEIGHT | | | | |
|------------------|---------------|------------------|-----------------|-----------------------------|
| Shoes | | Operating Weight | | Ground Pressure |
| Type | Width mm (in) | kg (lb) | | kgf / cm ² (psi) |
| Triple Grouser | 500 (20") | HX180A L | 18,140 (39,990) | 0.50 (7.13) |
| | | HX180A L Dozer | 19,235 (42,410) | 0.53 (7.56) |
| | 600 (24") | HX180A L | 18,400 (40,570) | 0.42 (6.03) |
| | | HX180A L Dozer | 19,505 (43,000) | 0.45 (6.39) |
| | 700 (28") | HX180A L | 18,665 (41,150) | 0.37 (5.24) |
| | | HX180A L Dozer | 19,780 (43,610) | 0.39 (5.55) |
| | 800 (32") | HX180A L | 18,920 (41,710) | 0.33 (4.65) |
| | | HX180A L Dozer | 19,985 (44,060) | 0.35 (4.91) |

| SWING SYSTEM | |
|---------------------------|---------------------------------------|
| Swing motor | Fixed displacement axial piston motor |
| Swing reduction | 2 - stage planetary |
| Swing bearing lubrication | Grease-bathed |
| Swing brake | Multi wet disc |
| Swing speed | 10.3 rpm |

| COOLANT & LUBRICANT CAPACITY | | |
|-----------------------------------|--------|-------|
| | US gal | liter |
| Fuel Tank | 76.6 | 290 |
| Engine Coolant | 6.1 | 23 |
| Engine Oil | 2.9 | 11 |
| Swing Device | 1.6 | 6.2 |
| Final Drive (Each) | 1.6 | 6 |
| Hydraulic System (Including Tank) | 67.4 | 255 |
| Hydraulic Tank | 33.0 | 125 |

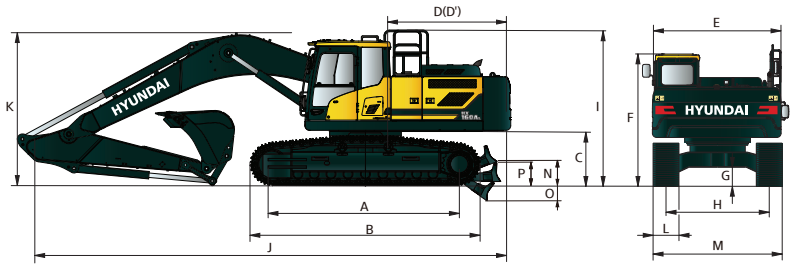
| UNDERCARRIAGE | |
|--|---------------------|
| The X-leg type center frame is integrally welded with reinforced box-section track frames. The undercarriage includes lubricated rollers, idlers, track adjusters with shock absorbing springs and sprockets, and a track chain with double or triple grouser shoes. | |
| Center Frame | X - Leg Type |
| Track Frame | Pentagonal Box Type |
| No. of Shoes on Each Side | 51 |
| No. of Carrier Roller | 2 x 2 |
| No. of Track Roller | 2 x 7 |
| No. of Rail Guard | 2 x 1 |

| CAB NOISE LEVEL | |
|--|----------|
| Guaranteed noise level presented below can be differed depending on a range of factors such as operating condition, speed of a cooling fan, types of engine and so forth. Hearing protection shall be necessary if an operator is working in the improperly aintained cabin or exposed to a noisy environment by leaving doors and/or windows open. With cooling fan speed at maximum value: | |
| Operator sound pressure level (ISO 6396:2008) | 71 dB(A) |
| Exterior sound power level (ISO 6395:2008) | 99 dB(A) |

* Distance of 15 m (49.2 ft), moving forward in second gear ratio

SPECIFICATIONS HX180A L

Powered By Cummins Performance Series Engine



HX180A DIMENSIONS

Unit: ft-in (mm)

5.10 m (16' 9") BOOM and 2.20 m (7' 3"), 2.60 m (8' 6"), 3.10 m (10' 2") ARM

| | | |
|---------------------------------------|--------|---------|
| A Tumbler Distance | 11' 0" | (3,360) |
| B Overall Length of Crawler | 13' 5" | (4,100) |
| *C Ground Clearance of Counter Weight | 3' 6" | (1,060) |
| D Tail Swing Radius | 8' 2" | (2,490) |
| D' Rear-End Length | 8' 2" | (2,490) |
| E Overall Width of Upper Structure | 8' 1" | (2,475) |
| *F Overall Height of Cab | 9' 9" | (2,980) |
| *G Min. Ground Clearance | 1' 6" | (460) |
| H Track gauge | 7' 5" | (2,250) |
| *I Overall Height of Guardrail | 10' 8" | (3,250) |

| | | | | |
|----------------------------------|----------------|----------------|----------------|----------------|
| Boom Length | 5,100 (16' 9") | | | |
| Arm Length | 2,200 (7' 3") | 2,600 (8' 6") | 3,100 (10' 2") | |
| J Overall Length | 8,660 (28' 5") | 8,650 (28' 5") | 8,670 (28' 5") | |
| *K Overall Height of Boom | 3,040 (10' 0") | 3,030 (9' 11") | 3,195 (10' 6") | |
| L Track Shoe | 500 (20") | 600 (24") | 700 (28") | 800 (32") |
| M Overall Width | 2,750 (9' 0") | 2,850 (9' 4") | 2,950 (9' 8") | 3,050 (10' 0") |
| **N Ground clearance of blade up | 615 (2' 0") | | | |
| **O Depth of blade down | 670 (2' 2") | | | |
| **P Height of blade | 640 (2' 1") | | | |

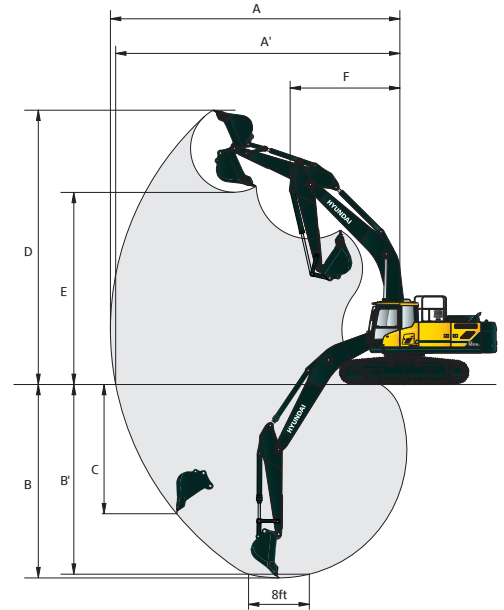
* This figure includes the size of grouzers.

**With dozer blade option

HX180A WORKING RANGE

Unit: ft-in (mm)

| | | | |
|--------------------------------------|----------------|-----------------|-----------------|
| Boom Length | 5,100 (16' 9") | | |
| Arm Length | 2,200 (7' 3") | 2,600 (8' 6") | 3,100 (10' 2") |
| A Max. Digging Reach | 8,690 (28' 6") | 9,020 (29' 7") | 9,450 (31' 0") |
| A' Max. Digging Reach on Ground | 8,530 (28' 0") | 8,860 (29' 1") | 9,300 (30' 6") |
| B Max. Digging Depth | 5,630 (18' 6") | 6,030 (19' 9") | 6,530 (21' 5") |
| B' Max. Digging Depth (8' Level) | 5,410 (17' 9") | 5,825 (19' 1") | 6,340 (20' 10") |
| C Max. Vertical Wall Digging Depth * | 3,410 (11' 2") | 3,600 (11' 10") | 3,845 (12' 7") |
| D Max. Digging Height | 8,670 (28' 5") | 8,750 (28' 8") | 8,880 (29' 2") |
| E Max. Dumping Height | 6,140 (20' 2") | 6,250 (20' 6") | 6,410 (21' 0") |
| F Min. Swing Radius | 3,180 (10' 5") | 3,170 (10' 5") | 3,160 (10' 4") |



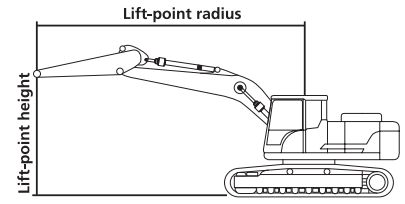
HX180A DIGGING FORCE

| Boom | Length | mm (ft-in) | 5,100 (16' 9") Mono Boom | | | Remark |
|----------------------|--------|------------|--------------------------|-----------------|-----------------|-------------------|
| | Weight | kg (lb) | 1,277 (2,810) | | | |
| Arm | Length | mm (ft-in) | 2,200 (7' 3") | 2,600 (8' 6") | 3,100 (10' 2") | |
| | Weight | kg (lb) | 807 (1,780) | 860 (1,900) | 888 (1,960) | |
| Bucket Digging Force | SAE | kN | 108.0 [117.0] | 108.0 [117.0] | 108.0 [117.0] | [] : Power Boost |
| | | kgf | 10,987 [11,930] | 10,004 [11,950] | 11,006 [11,950] | |
| | | lbf | 24,222 [26,301] | 24,259 [26,345] | 24,264 [26,345] | |
| | ISO | kN | 126.0 [137.0] | 126.0 [137.0] | 126.0 [137.0] | |
| | | kgf | 12,872 [13,980] | 12,892 [14,000] | 12,894 [14,000] | |
| | | lbf | 28,379 [30,821] | 28,421 [30,865] | 28,427 [30,865] | |
| Arm Crowd Force | SAE | kN | 87.0 [95.0] | 77.0 [84.0] | 69.0 [75.0] | |
| | | kgf | 8,889 [9,650] | 7,879 [8,550] | 7,035 [7,640] | |
| | | lbf | 19,596 [21,275] | 17,370 [18,850] | 15,510 [16,843] | |
| | ISO | kN | 92.0 [99.0] | 81.0 [88.0] | 72.0 [78.0] | |
| | | kgf | 9,339 [10,140] | 8,237 [8,940] | 7,314 [7,940] | |
| | | lbf | 20,590 [22,355] | 18,158 [19,709] | 16,124 [17,505] | |

Note : Boom weight includes arm cylinder, piping, and pin
Arm weight includes bucket cylinder, linkage, and pin

SPECIFICATIONS HX180AL

Powered By Cummins Performance Series Engine



Lifting Capacity (Without Dozer)

Boom: 5.1 m (16' 9")

Arm: 2.60 m (8' 6")

Shoe 700 mm (28") triple grouser

CWT 3,250 kg (7,170 lb)

Capacities based on North American Standard Configuration
in accordance with ISO condition 2 standard.

Rating over front

Rating over side or 360 degree

| Lift-point height m (ft) | | Lift-point radius | | | | | | | | | | At max. reach | | | |
|-----------------------------|----------|-------------------|-----------------|------------------|------------------|-----------------|-----------------|-----------------|--------------|-----------------|--------------|---------------|-----------------|-----------------|----------------|
| | | 1.5 m (4.9 ft) | | 3.0 m (9.8 ft) | | 4.5 m (14.8 ft) | | 6.0 m (19.7 ft) | | 7.5 m (24.6 ft) | | Capacity | | Reach | |
| | | | | | | | | | | | | | | m (ft) | |
| 7.5 m 24.6 ft | kg lb | | | | | | | | | | | | *3410 *7520 | *3410 *7520 | 4.85 (15.9) |
| 6.0 m 19.7 ft | kg lb | | | | | | *3840 *8470 | *3840 *8470 | | | | | *2970 *6550 | *2970 *6550 | 6.27 (20.6) |
| 4.5 m 14.8 ft | kg lb | | | | *4870 *10740 | *4870 *10740 | *4430 *9770 | 4170 9190 | | | | | *2850 *6280 | *2850 *6280 | 7.10 (23.3) |
| 3.0 m 9.8 ft | kg lb | | | *9370 *20660 | *9370 *20660 | *6120 *13490 | *6120 *13490 | *4940 *10890 | 4030 8880 | *3110 *6860 | 2870 6330 | | *2880 *6350 | 2840 6260 | 7.54 (24.7) |
| 1.5 m 4.9 ft | kg lb | | | | | *7380 *16270 | 5810 12810 | *5520 *12170 | 3870 8530 | *4040 *8910 | 2810 6190 | | *3060 *6750 | 2720 6000 | 7.66 (25.1) |
| Ground Line | kg lb | | | *5290 *11660 | *5290 *11660 | *8070 *17790 | 5590 12320 | 5740 12650 | 3750 8270 | | | | *3420 *7540 | 2780 6130 | 7.47 (24.5) |
| -1.5 m -4.9 ft | kg lb | *5090 *11220 | *5090 *11220 | *9190 *20260 | *9190 *20260 | *8010 *17660 | 5520 12170 | 5690 12540 | 3700 8160 | | | | *4130 *9110 | 3060 6750 | 6.95 (22.8) |
| -3.0 m -9.8 ft | kg lb | *9360 *20640 | *9360 *20640 | *10170 *22420 | *10170 *22420 | *7120 *15700 | 5580 12300 | *4910 *10820 | 3770 8310 | | | | *4890 *10780 | 3760 8290 | 6.01 (19.7) |
| -4.5 m -14.8 ft | kg lb | | | *6860 *15120 | *6860 *15120 | | | | | | | | *4560 *10050 | *4560 *10050 | 4.39 (14.4) |

Lifting Capacity (Dozer Down)

Boom: 5.1 m (16' 9")

Arm: 2.60 m (8' 6")

Shoe 700 mm (28") triple grouser

CWT 3,250 kg (7,170 lb)

Capacities based on North American Standard Configuration
in accordance with ISO condition 2 standard.

Rating over front

Rating over side or 360 degree

| Lift-point height m (ft) | | Lift-point radius | | | | | | | | | | At max. reach | | | |
|-----------------------------|----------|-------------------|-----------------|------------------|------------------|-----------------|-----------------|-----------------|----------------|-----------------|----------------|---------------|-----------------|-----------------|----------------|
| | | 1.5 m (4.9 ft) | | 3.0 m (9.8 ft) | | 4.5 m (14.8 ft) | | 6.0 m (19.7 ft) | | 7.5 m (24.6 ft) | | Capacity | | Reach | |
| | | | | | | | | | | | | | | m (ft) | |
| 7.5 m 24.6 ft | kg lb | | | | | | | | | | | | *3410 *7520 | *3410 *7520 | 4.85 (15.9) |
| 6.0 m 19.7 ft | kg lb | | | | | | | *3840 *8470 | *3840 *8470 | | | | *2970 *6550 | *2970 *6550 | 6.27 (20.6) |
| 4.5 m 14.8 ft | kg lb | | | | | *4870 *10740 | *4870 *10740 | *4430 *9770 | *4430 *9770 | | | | *2850 *6280 | *2850 *6280 | 7.10 (23.3) |
| 3.0 m 9.8 ft | kg lb | | | *9370 *20660 | *9370 *20660 | *6120 *13490 | *6120 *13490 | *4940 *10890 | 4440 9790 | *3110 *6860 | *3110 *6860 | | *2880 *6350 | *2880 *6350 | 7.54 (24.7) |
| 1.5 m 4.9 ft | kg lb | | | | | *7380 *16270 | 6430 14180 | *5520 *12170 | 4280 9440 | *4040 *8910 | 3110 6860 | | *3060 *6750 | 3020 6660 | 7.66 (25.1) |
| Ground Line | kg lb | | | *5290 *11660 | *5290 *11660 | *8070 *17790 | 6210 13690 | *5900 *13010 | 4160 9170 | | | | *3420 *7540 | 3080 6790 | 7.47 (24.5) |
| -1.5 m -4.9 ft | kg lb | *5090 *11220 | *5090 *11220 | *9190 *20260 | *9190 *20260 | *8010 *17660 | 6150 13560 | *5850 *12900 | 4110 9060 | | | | *4130 *9110 | 3390 7470 | 6.95 (22.8) |
| -3.0 m -9.8 ft | kg lb | *9360 *20640 | *9360 *20640 | *10170 *22420 | *10170 *22420 | *7120 *15700 | 6200 13670 | *4910 *10820 | 4180 9220 | | | | *4890 *10780 | 4160 9170 | 6.01 (19.7) |
| -4.5 m -14.8 ft | kg lb | | | *6860 *15120 | *6860 *15120 | | | | | | | | *4560 *10050 | *4560 *10050 | 4.39 (14.4) |

NOTES:

- Lifting capacities are based on ISO 10567.
- Lifting capacity of the HX Series does not exceed 75% of tipping load with the machine on firm, level ground or 87% of full hydraulic capacity.
- The Lift-point is bucket pivot mounting pin on the arm (without bucket mass).
- (*) indicates load limited by hydraulic capacity.

| ENGINE | STD | OPT |
|---|-----|-----|
| Cummins B4.5 | | |
| Engine Auto Idle | ● | |
| Engine Auto Shutdown Control | ● | |
| Emergency Engine Stop Switch | ● | |
| HYDRAULIC SYSTEM | | |
| INTELLIGENT POWER CONTROL (IPC) UPGRADE | | |
| 3-Power Mode, 2-Work Mode, User Mode | ● | |
| Variable Power Control | ● | |
| Pump Flow Control | ● | |
| Attachment Mode Flow Control | ● | |
| Hyundai Bio Hydraulic oil (HBHO) | | ● |
| CAB & INTERIOR STD OPT | | |
| ISO STANDARD CABIN | | |
| Rise-Up Type Windshield Wiper | ● | |
| Radio / USB Player | ● | |
| Handsfree Mobile Phone System with USB | ● | |
| 12V Power Outlet (24V DC to 12V DC converter) | ● | |
| Electric Horn | ● | |
| All-Weather Steel Cab with 360° Visibility | ● | |
| Safety glass - Tempered glass | ● | |
| Safety glass - Tempered glass with front laminated glass | | ● |
| Sliding Fold-In Front Window | ● | |
| Sliding Side Window (LH) | ● | |
| Lockable Door | ● | |
| Hot & Cool Box | ● | |
| Storage Compartment | ● | |
| Transparent Cabin Roof-Cover | | ● |
| Sun Visor | ● | |
| Door And Cab Locks, One Key | ● | |
| Pilot-Operated Slidable Joystick | ● | |
| Adjustable L & R Consoles | ● | |
| AUTOMATIC CLIMATE CONTROL | | |
| Air Conditioner & Heater | ● | |
| Defroster | ● | |
| Starting Aid (Air Grid Heater) for Cold Weather | ● | |
| CENTRALIZED MONITORING | | |
| 8" LCD Display | ● | |
| Engine Speed or Trip Meter / Accel. | ● | |
| Engine Coolant Temperature Gauge | ● | |
| Max Power | ● | |
| Low Speed / High Speed | ● | |
| Auto Idle | ● | |
| Overload warning with alarm | ● | |
| Check Engine | ● | |
| Air Cleaner Clogging | ● | |
| Indicators | ● | |
| ECO Gauges | ● | |
| Fuel Level Gauge | ● | |
| Hyd. Oil Temperature Gauge | ● | |
| Warnings | ● | |
| Communication Error | ● | |
| Low Battery | ● | |
| Clock | ● | |
| Cabin Lights | ● | |
| Cabin Front Window Rain Guard | | ● |
| Cabin Roof-Steel Cover | | ● |
| SEAT | | |
| Adjustable Air Suspension Seat With Heater | ● | |
| CABIN FOG (ISO 10262) LEVEL 2 | | |
| FOG (Falling Object Protective Structure)-ISO 10262 Level 2 | | ● |
| CABIN ROPS | | |
| ROPS (Roll Over Protective Structures)-ISO 12117-2 | ● | |

| SAFETY | STD | OPT |
|--|-----|-----|
| Lifting Mode | ● | |
| Auto Safety Lock | ● | |
| Seatbelt Warning Alarm | ● | |
| Battery Master Switch | ● | |
| Rear View Camera | ● | |
| AAVM (Advanced Around View Monitoring) | | ● |
| Four Front Working Lights (2 Boom Mounted, 2 Front Frame Mounted) | ● | |
| Travel Alarm | ● | |
| Rear Work Lamp | | ● |
| Beacon Lamp | | ● |
| Automatic Swing Brake | ● | |
| Boom Holding System | ● | |
| Arm Holding System | ● | |
| Safety Lock Valve For Boom Cylinder With Overload Warning Device | | ● |
| Safety Lock Valve For Arm Cylinder | | ● |
| Swing Lock System | | ● |
| Three Outside Rearview Mirror | ● | |
| ATTACHMENT | | |
| Booms | | |
| 5.10 m, 16' 9" Mono | ● | |
| 5.10 m, 16' 9" 2-Piece | | ● |
| Arms | | |
| 2.2 m, 7' 3" | | ● |
| 2.6 m, 8' 6" | ● | |
| 3.1 m, 10' 2" | | ● |
| OTHER | | |
| Fuel Pre-Filter | ● | |
| Fuel Warmer | ● | |
| Pre-Cleaner | ● | |
| Self-Diagnostics System | ● | |
| Hi MATE (Remote Management System) | | ● |
| Batteries (2 x 12 V x 100 AH) | ● | |
| Fuel Filler Pump (35 lpm) | | ● |
| 2-Way auxiliary w Proportional control | ● | |
| Rotating Piping Kit | | ● |
| Air Compressor | | ● |
| Quick Coupler Piping | ● | |
| Quick Coupler | ● | |
| One Pedal Straight Travel System | | ● |
| Accumulator For Lowering Work Equipment | ● | |
| Pattern Change Valve (2 Patterns) | ● | |
| Fine (Cushion/Free) Swing Control | | ● |
| Tool Kit | | ● |
| UNDERCARRIAGE | | |
| Lower Frame Under Cover | ● | |
| Track Shoes | | |
| Triple Grousers Shoes (500 mm, 20") | | ● |
| Triple Grousers Shoes (600 mm, 24") | | ● |
| Triple Grousers Shoe (700 mm, 28") | ● | |
| Track Guard | ● | |

- * Standard and optional equipment may vary. Contact your Hyundai dealer for more information. The machine may vary according to International standards.
- * The photos may include attachments and optional equipment that are not available in your area.
- * Materials and specifications are subject to change without advance notice.
- * All imperial measurements rounded off to the nearest pound or inch.