

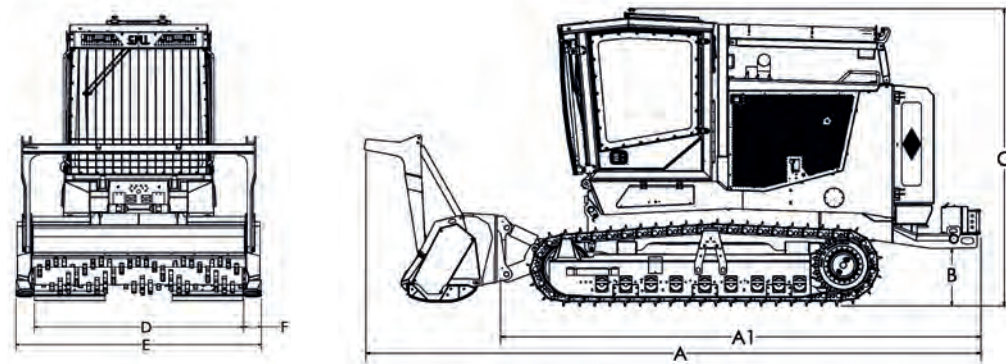


# HURRICANE C300

## SPECIFICATIONS

ENGINE	
Manufacturer & Model	CUMMINS, QSL 9 Tier 4 Final
Cylinders & Displacement	6 cylinders / 543 CID (8.9 L)
Peak Power at 2,000 rpm (SAE J1995)	290 hp (216 kW)
Net Peak Torque	895 ft-lbf (1 213 Nm)
Fan	Automatic variable pitch, reversible
HYDRAULICS	
Pump System	4
Filtration	10 Microns
ELECTRICAL	
Voltage	12 Volts
Standard Light	8 LED type (4 Front, 2 Side, 2 Rear)
SERVICEABILITY	
Fuel Tank	105 gal US (394 L)
Hydraulic Reservoir	43 gal US (163 L)
Cooling System	12 gal US (45 L)

UNDERCARRIAGE & GROUND PRESSURE	
Chain Type & Size	Dry, D3
Track Shoe & Rollers	30 in (760 mm) single grouser with mud hole. Dozer type rollers. SALT chain with 22 in pads optional (560 mm)
Ground Pressure (Crawler only, 30 in pads)	3.19 psi (0.22 kg/cm <sup>2</sup> )
Weight (Crawler only, 30 in pads)	23 613 lb (10 715 kg)
Ground Pressure (Crawler only, 22 in pads)	4.20 psi (0.29 kg/cm <sup>2</sup> )
Weight (Crawler only, 22 in pads)	22 783 lb (10 355 kg)
TOP SPEED	
Motor	Two speed hydraulic motors
Speed	Variable speed 0 to 3.4 mph (0 to 5.5 km/h)
STANDARD CHARACTERISTICS	
- Push button cab lift with manual override	- Air suspension seat
- Backup camera	- ROPS/FOPS/OPS Certification
- AM/FM/Bluetooth radio	- 15 000 lb winch
- Hydraulic oil filler pump	- 12 Volts DC outlet



## MACHINE DIMENSIONS

A - Overall Length with mulcher head (\*): 257 in (653 cm)

A1 - Overall Length: 197 in (500 cm)

B - Ground Clearance: 20.5 in (52 cm)

C - Overall Height: 120.8 in (307 cm)

D - Overall width, 30 in (760 mm) pads: 88.8 in (225 cm)

D - Overall width, 22 in (560 mm) pads: 80.8 in (205 cm)

E - Mulching head overall width (\*): 106.9 in (272 cm)

(E-2F) - Mulching head working width (\*): 90.7 in (231 cm)

(\* ) - Specs for FAE 200U225 head; Dimensions will vary if other type of head is selected

CMI Mulching inc.  
1200 Chemin Herman-Lavigne | Saint-Cyrille-De-Wendover, QC, Canada J1Z 1S4  
819 397-2288 | www.cmimulching.com

*C.M.I. reserves the right to change specifications, design and price of products described in this literature without notice. C.M.I. and C300 are registered trademarks of C.M.I. Danri inc. Printed in Canada.*

# HURRICANE C300



The Mulching Specialists

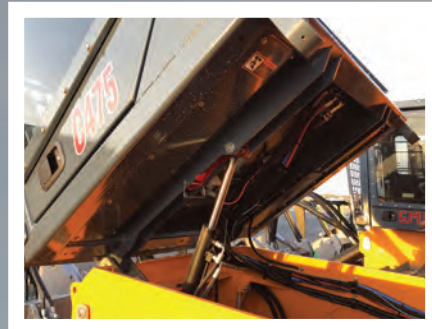
PERFORMANCE | RELIABILITY | SIMPLICITY

# HURRICANE C300

## NEW CAB



NEW DIGITAL SCREEN FOR EASY DATA ACCESS AND DIAGNOSTIC  
NEW ERGONOMIC LAYOUT  
12 VOLTS DC OUTLET



PUSH BUTTON CAB TILT FOR EASY ACCESS TO COMPONENTS & HYDRAULIC OIL FILLING PUMP

AM/FM/BLUETOOTH RADIO  
AIR SUSPENSION SEAT  
PRESSURISED CABIN WITH INTEGRATED HEAVY DUTY PRE-CLEANER



GREAT VISIBILITY

THE LEGENDARY FRAME OF THE HURRICANE  
PERFECTLY BALANCED  
LIGHT WEIGHT  
RESISTANT TO YEARS OF ABUSE IN THE HARDEST APPLICATIONS  
DECADES OF PROVEN EXPERIENCE, CUSTOMER SATISFACTION AND CONTINUITY IN DESIGN

OUR CANOPY GIVES AN EXTRA PROTECTION AGAINST FLAMMABLE DEBRIS



HIGH EFFICIENCY COOLING PACKAGE WITH COARSE FINS FOR EASY CLEANING

15 000 LB WINCH

THE C300 USES THE CUMMINS QSL9 WHICH IS THE LARGEST ENGINE IN ITS CLASS OFFERING MORE RELIABILITY WHILE DELIVERING OPTIMAL FUEL EFFICIENCY AND A BETTER CONTROL AND PERFORMANCE IN THE MULCHING PROCESS

PERSONALIZED CONFIGURATION:  
CONFIGURE WITH S250 STUMP GRINDER OR THE TYPE OF MULCHING HEAD THAT FITS YOUR APPLICATION BEST

DOZER TYPE ROLLERS  
IMPROVED TRACTION POWER FOR BETTER MANOEUVRABILITY IN SOFT AND STEEP TERRAIN  
FULL ROCK GUARD PROTECTION

